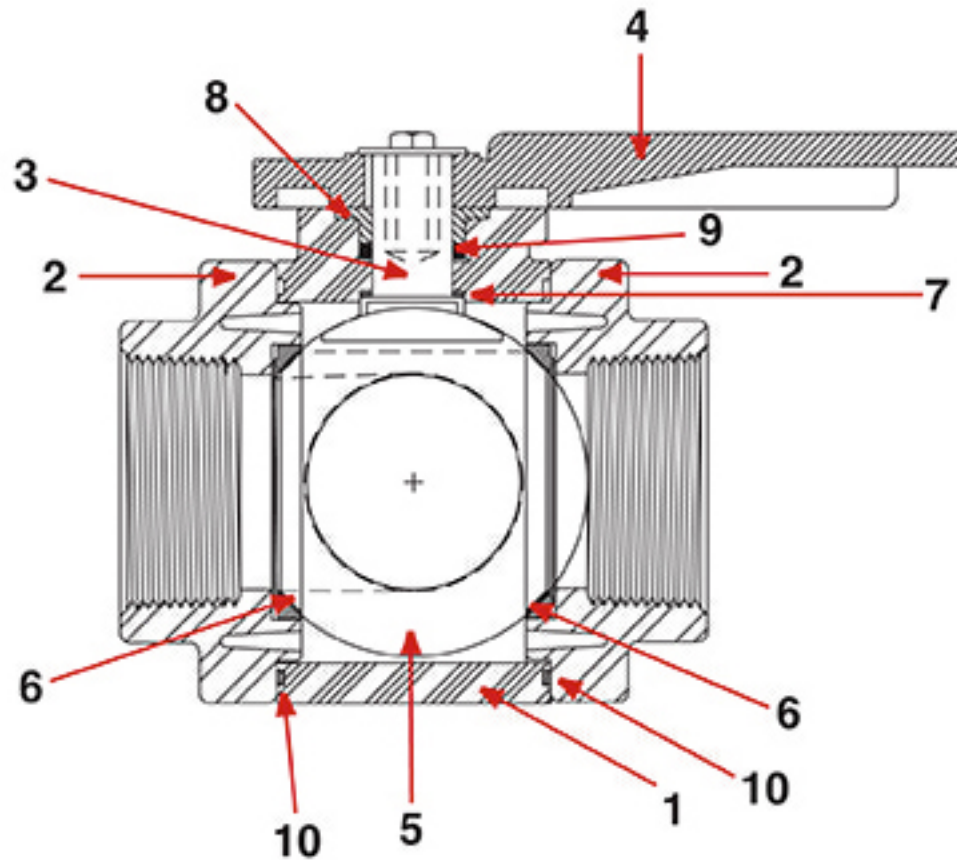
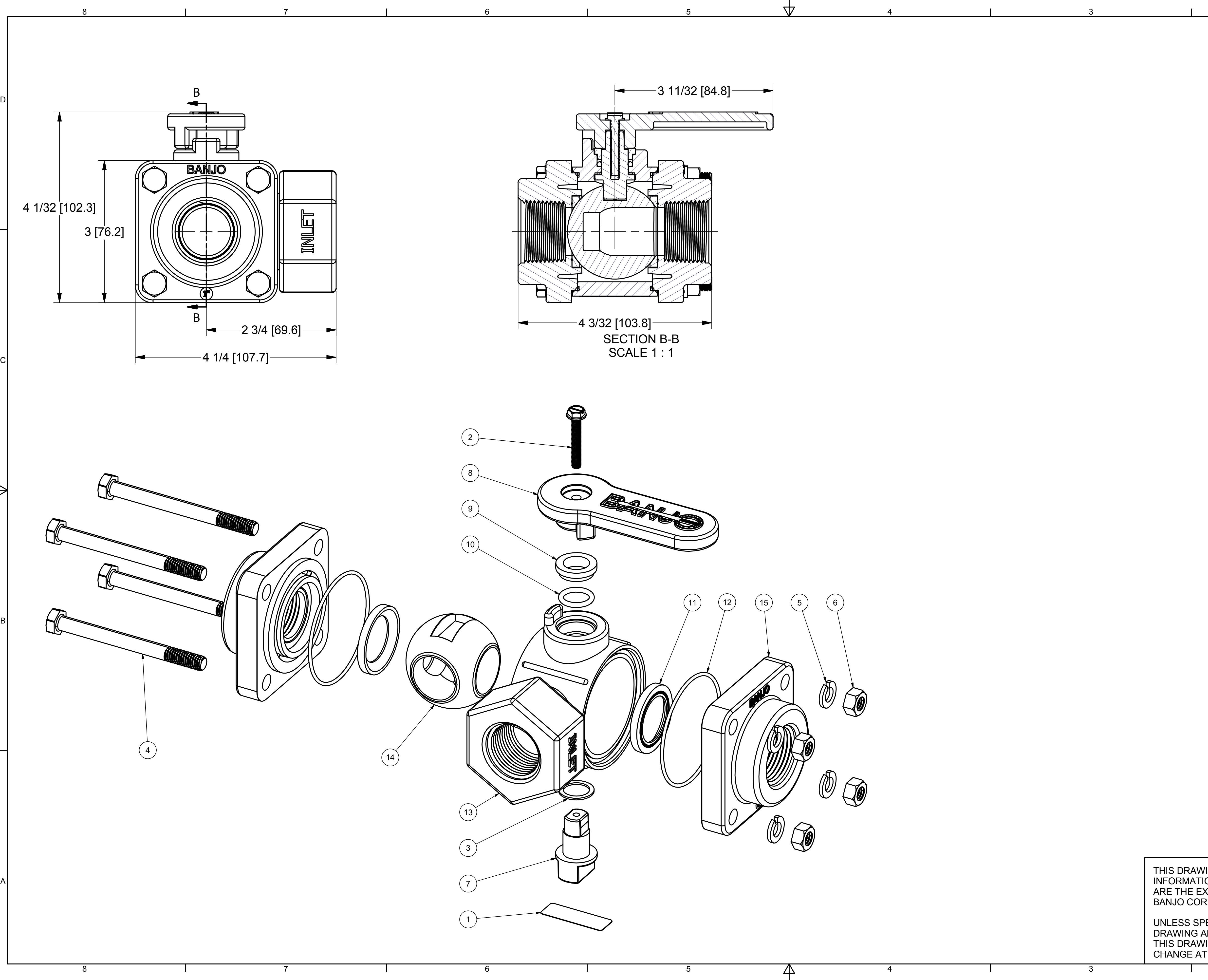


Part Number : V100SL



Item	Part No.	Description	Qty.
1	V07354S	¾" Valve Body	1
1	V10354S	1" Valve Body	1
2	V07357	¾" End Plate	2
2	V10257	1" End Plate	2
3	V10151A	Stem	1
4	V10153A	Handle -Straight	1
5	V10355S	Ball	1
6	V10258	Seats	2
7	V10060	Thrust Bushing	1
8	V10159	Upper Stem Bushing	1
9	V10163	FKM (viton type) Stem O-Ring	1
10	V10264	FKM (viton type) Body O-Ring	2



Parts List			
ITEM	QTY	PART NUMBER	DESCRIPTION
1	1	050DECAL	Banjo Logo Decal
2	1	V10020A	10-32 X 1 1/4" SMS
3	1	V10060	THRUST BEARING
4	4	V10117	5/16 - 18 X 3 1/2" HHCS
5	4	V10118	5/16" LOCKWASHER
6	4	V10119	5/16" HEX NUT
7	1	V10151A	STEM
8	1	V10153A	HANDLE
9	1	V10159	STEM BUSHING
10	1	V10163	#113 O-RING, FKM
11	2	V10258	3" FP Ball Seat
12	2	V10264	#36 O-RING
13	1	V10354S	1" Machined Side Load Valve Body
14	1	V10355S	1" Side Load Ball
15	2	V10357	1" ENDPLATE

THIS DRAWING AND ALL INFORMATION CONTAINED THEREON ARE THE EXCLUSIVE PROPERTY OF BANJO CORPORATION.

UNLESS SPECIFICALLY NOTED, THIS DRAWING AND ITEMS SHOWN ON THIS DRAWING ARE SUBJECT TO CHANGE AT ANY TIME.

BANJO CORPORATION
 150 BANJO DRIVE, CRAWFORDSVILLE, IN 47933
 WEB SITE: WWW.BANJOCORP.COM
 E-MAIL: SALES1@BANJOCORP.COM

DESCRIPTION
1" Side Load 3-Way Valve Assembly

PART NUMBER
V100SL