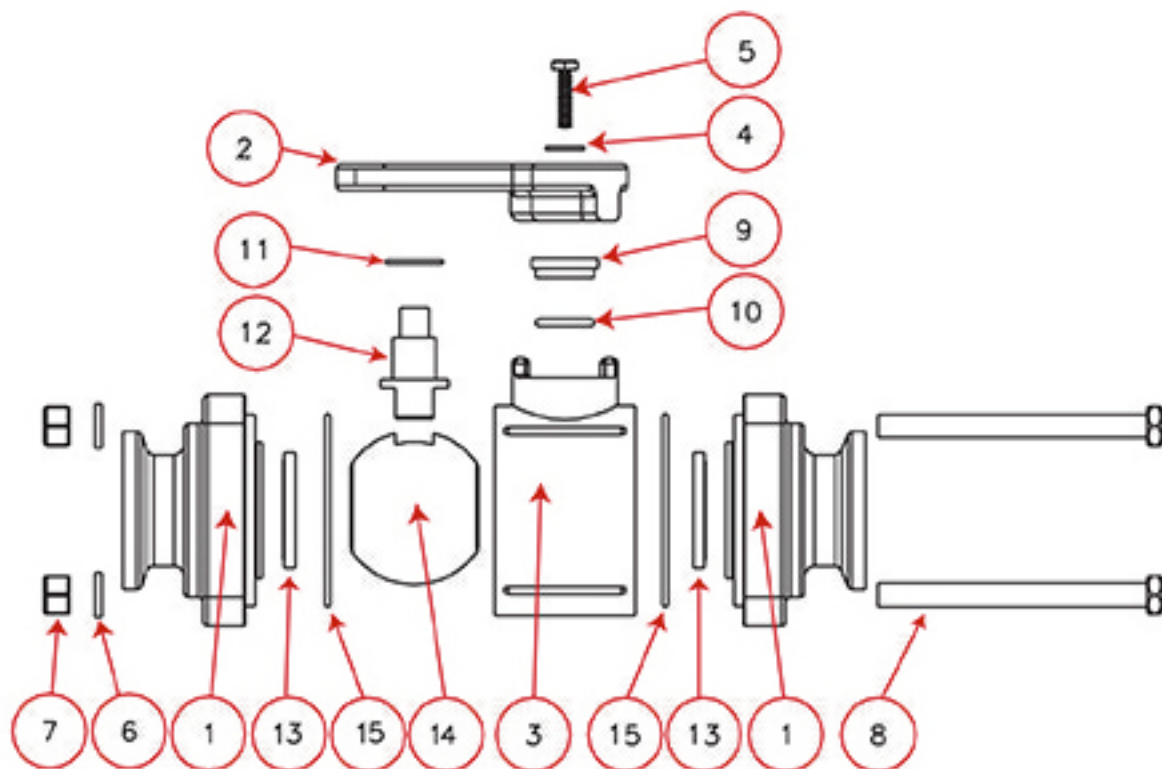
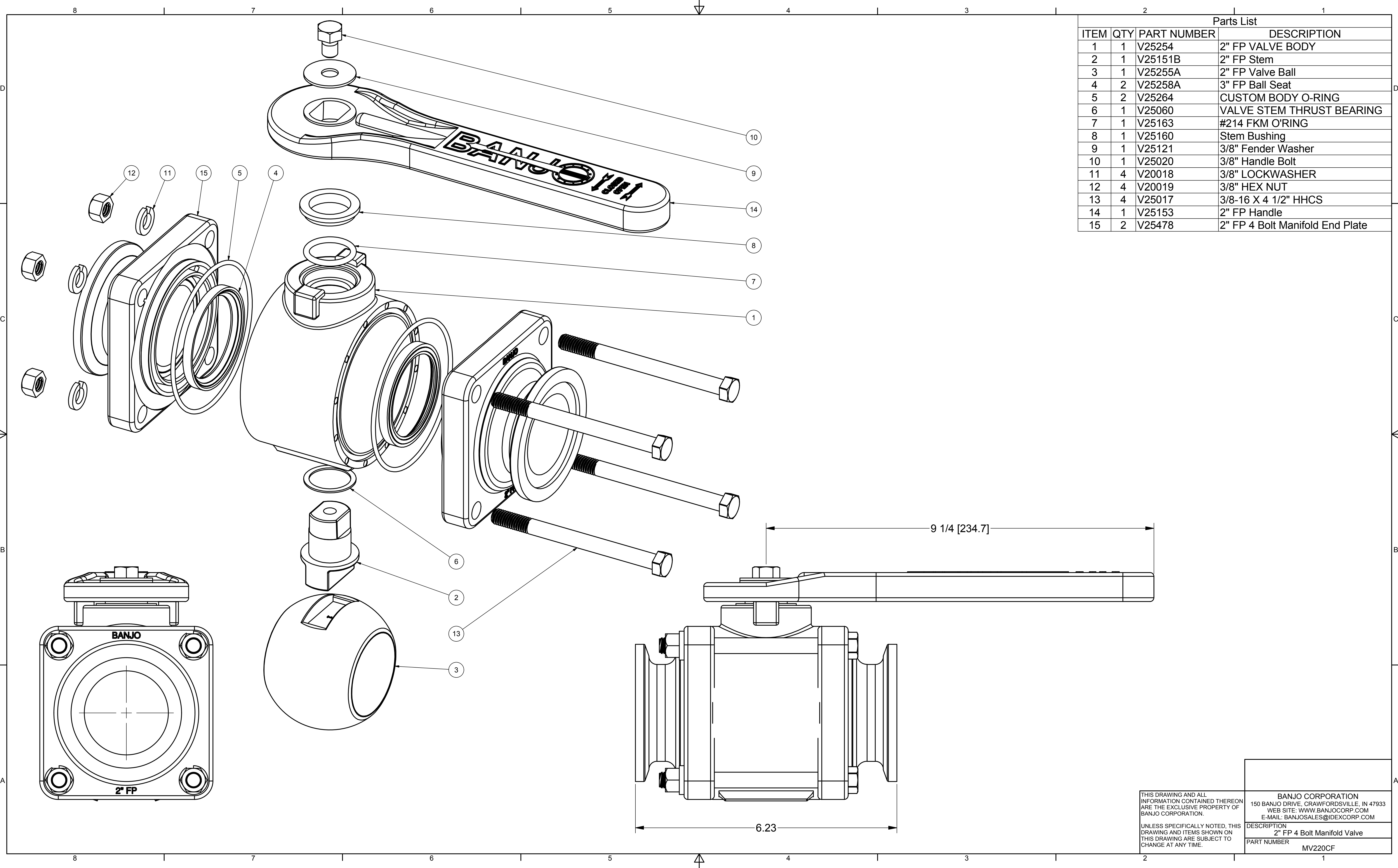


Part Number : MV220CF



Item	Part No.	Description	Qty.
1	V25478	2" Full Port Manifold End Plate	2
2	V25153	Handle	1
3	V25254	Body	1
4	V25121	S.S. Handle Washer	1
5	V25020	3/8" x 1/2" S.S. Handle Bolt	4
6	V20018	3/8" S.S. Lock Washer	4
7	V20019	3/8" 16 SS Hex Nut	4
8	V20017	3/8" x 4" S.S. Body Bolt	1
9	V25160	Upper Stem Bushing	1
10	V25163	FKM (viton type) Stem O-Ring	1
11	V25060	Thrust Washer	1
12	V25151B	Stem	1
13	V25258A	Ball Seat	2
14	V25255A	Ball	1
15	V25264	FKM (viton type) Body O-Ring	2



Parts List			
ITEM	QTY	PART NUMBER	DESCRIPTION
1	1	V25254	2" FP VALVE BODY
2	1	V25151B	2" FP Stem
3	1	V25255A	2" FP Valve Ball
4	2	V25258A	3" FP Ball Seat
5	2	V25264	CUSTOM BODY O-RING
6	1	V25060	VALVE STEM THRUST BEARING
7	1	V25163	#214 FKM O'RING
8	1	V25160	Stem Bushing
9	1	V25121	3/8" Fender Washer
10	1	V25020	3/8" Handle Bolt
11	4	V20018	3/8" LOCKWASHER
12	4	V20019	3/8" HEX NUT
13	4	V25017	3/8-16 X 4 1/2" HHCS
14	1	V25153	2" FP Handle
15	2	V25478	2" FP 4 Bolt Manifold End Plate

THIS DRAWING AND ALL INFORMATION CONTAINED THEREON ARE THE EXCLUSIVE PROPERTY OF BANJO CORPORATION.

UNLESS SPECIFICALLY NOTED, THIS DRAWING AND ITEMS SHOWN ON THIS DRAWING ARE SUBJECT TO CHANGE AT ANY TIME.

BANJO CORPORATION
 150 BANJO DRIVE, CRAWFORDSVILLE, IN 47933
 WEB SITE: WWW.BANJOCORP.COM
 E-MAIL: BANJOSALES@IDEXCORP.COM

DESCRIPTION
 2" FP 4 Bolt Manifold Valve

PART NUMBER
 MV220CF