



FLOMAX[®] 8 HYDRAULIC

2" x 2" Self Priming Centrifugal Pump

FLOMAX[®] 8 hydraulic self-priming centrifugal pumps are capable of creating vacuum sufficient to lift liquids from heights up to 25 feet above the source. Once primed, the pump's built in flapper valve will maintain a full column of liquid in the suction line.

A FLOMAX[®] 8 hydraulic pump is available with a .37, .45 or .58 cubic inch displacement gerotor motors. They are capable of hydraulic flows ranging from 5 GPM to 12 GPM and hydraulic pressures ranging from 900 PSI to 1850 PSI.

Standard features include stainless steel drive sleeve, stainless steel fasteners, renewable wearplate, and a semi-open dynamically balanced impeller. Options include double grease lubricated seals, stainless steel impeller and seals for all types of abrasive and/or corrosive services.

The FLOMAX[®] series of pumps are commonly used in Industrial, Agricultural and Marine applications, such as: Bilge Pumps, Auxiliary Fire Pumps, Ballast Transfer Pumps, Washdown Pumps, Fertilizer and Pesticide Pumps, Applicators & Sprayers, Blending Pumps, Nurse Tanks, Bulk Transfer Pumps and much more.



SPECIFICATIONS:

PSI	Up to 120
Suction and Discharge	2" x 2" NPT ports
Materials of Construction	316 stainless steel Aluminum Bronze Cast iron
Flow	Up to 200 GPM
Head Feet	Up to 275'
Impeller	5.0" semi-open
Max Solid Size	.56" diameter
Drive Options	Hydraulic motor .37 cu. in. Hydraulic motor .45 cu. in. Hydraulic motor .58 cu. in.
Seal	Special seal material combinations available (consult factory) Standard carbon / ceramic / Viton

Application:

- Agricultural
- Industrial
- Marine

Features:

- Renewable wear plate
- Stainless steel drive sleeve
- Stainless steel fasteners
- Up to a 25' suction lift

Hydraulic Fluid Flow:

- Up to 12 GPM

Hydraulic Motor:

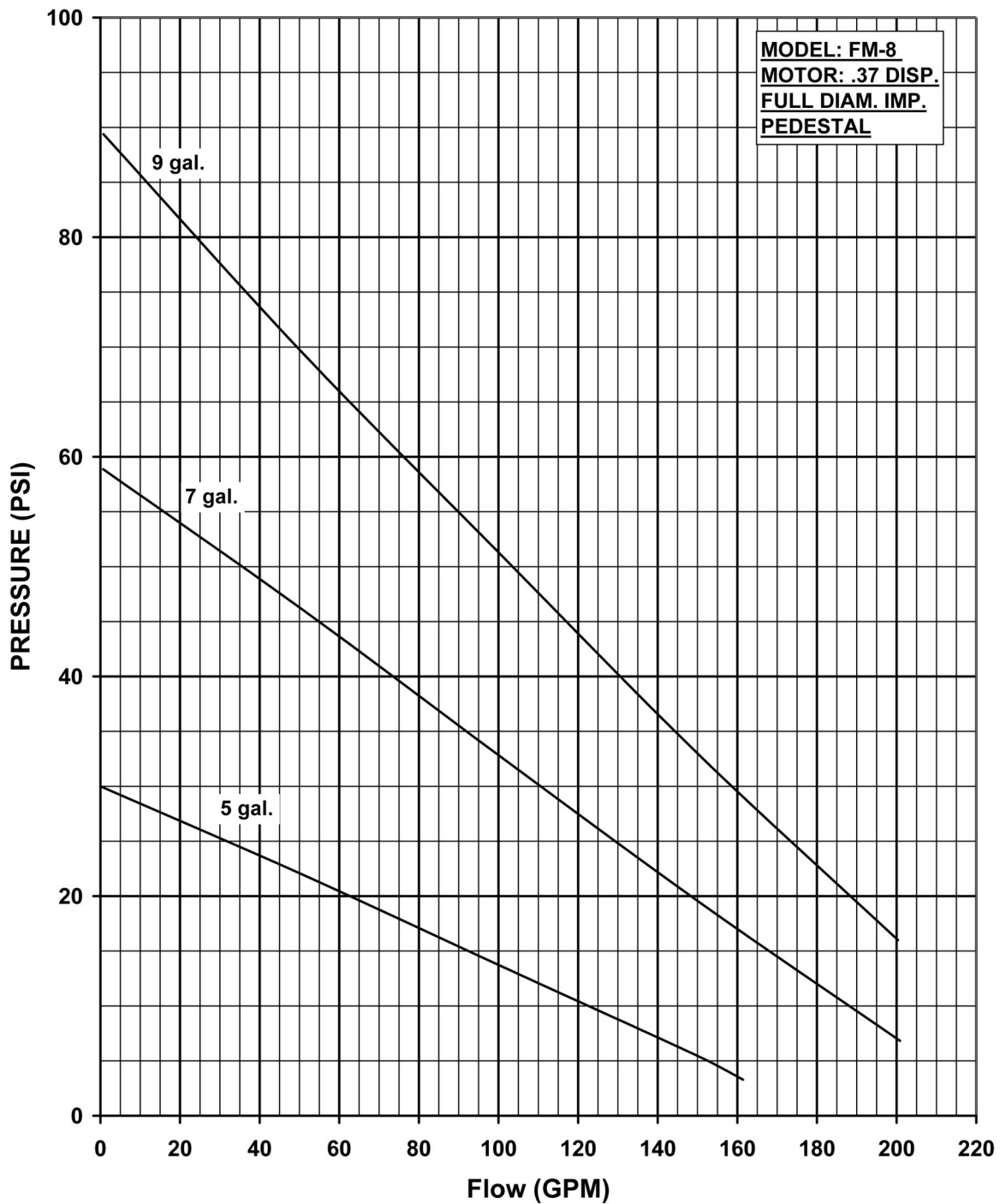
- Gerotor

Hydraulic System Pressure:

- Up to 1900 psi

Options:

- Hydraulic motors with flow control

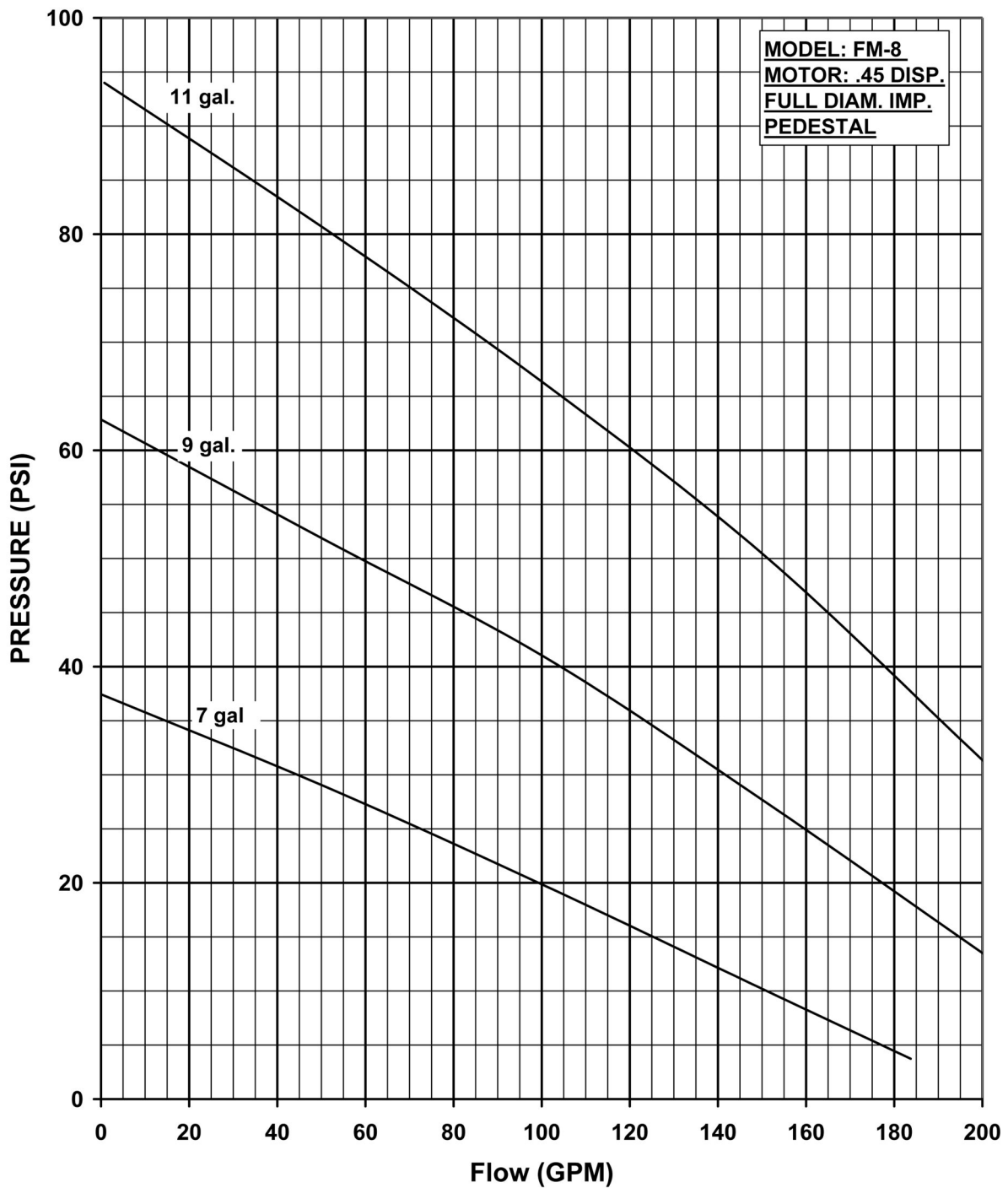


OIL FLOW	SHUT OFF	20	40	60	80	100	120	140	160	180	200	MAX. HYD. OIL PRESS. REQ.
	0 GPM	GPM	GPM	GPM	GPM	GPM	GPM	GPM	GPM	GPM	GPM	
5 GPM	30 PSI	27 PSI	24 PSI	21 PSI	17 PSI	14 PSI	11 PSI	7 PSI	4 PSI			920 PSI
7 GPM	59 PSI	54 PSI	49 PSI	43 PSI	37 PSI	33 PSI	27 PSI	22 PSI	17 PSI	12 PSI	7 PSI	1460 PSI
9 GPM	89 PSI	82 PSI	74 PSI	66 PSI	57 PSI	49 PSI	42 PSI	38 PSI	29 PSI	23 PSI	17 PSI	1850 PSI

CN 7090-S



34800 BENNETT • FRASER, MI 48026-1686
 (586) 293-8240 • FAX (586) 293-8469
 (800) 563-8006 • www.mppumps.com

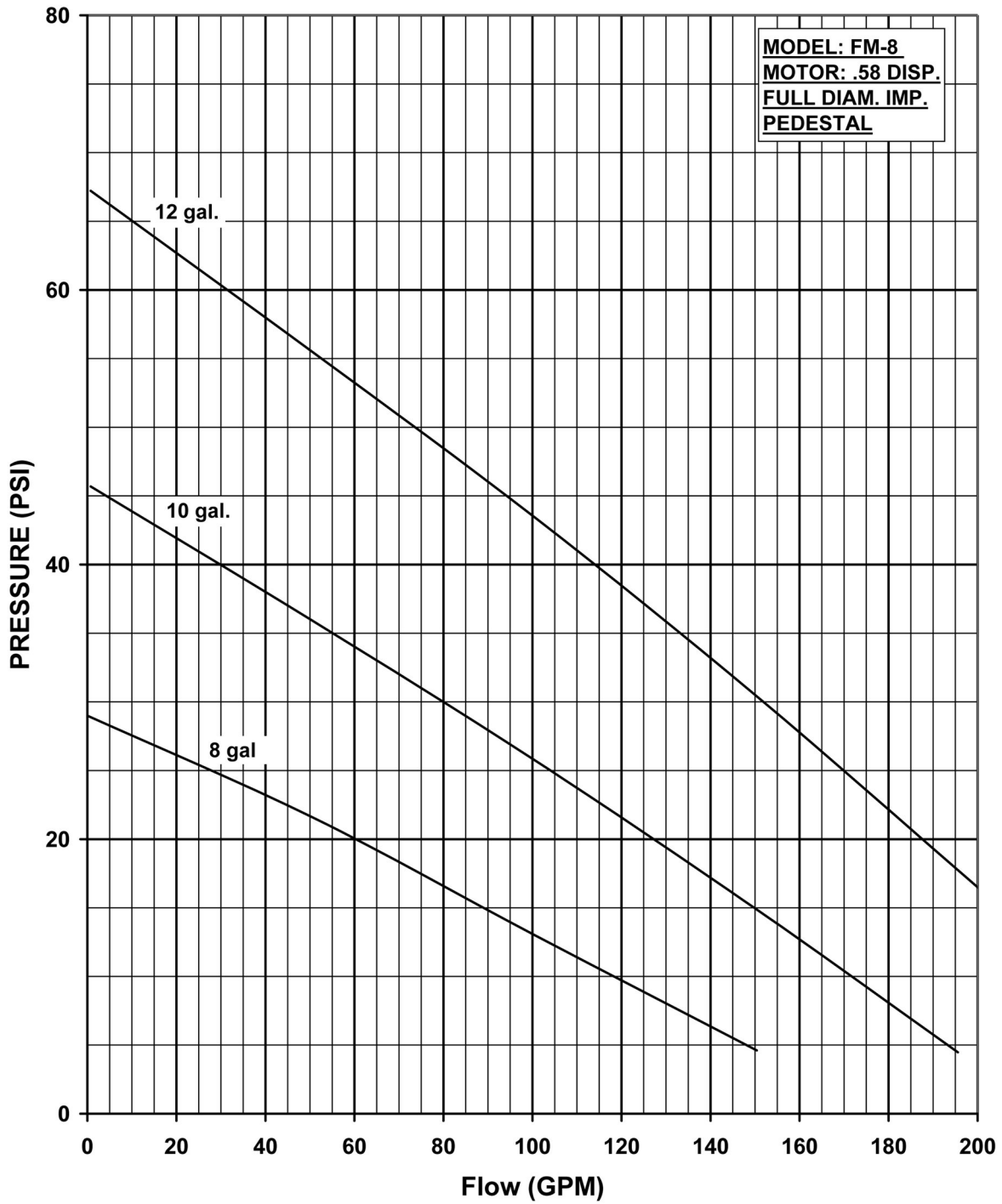


OIL FLOW	SHUT OFF	20	40	60	80	100	120	140	160	180	200	MAX. HYD. OIL PRESS. REQ.
	0 GPM	GPM	GPM	GPM	GPM	GPM	GPM	GPM	GPM	GPM	GPM	
7 GPM	37 PSI	34 PSI	31 PSI	27 PSI	24 PSI	20 PSI	16 PSI	13 PSI	8 PSI	4 PSI		900 PSI
9 GPM	62 PSI	58 PSI	54 PSI	50 PSI	46 PSI	41 PSI	36 PSI	31 PSI	25 PSI	19 PSI	14 PSI	1400 PSI
11 GPM	94 PSI	89 PSI	83 PSI	78 PSI	72 PSI	66 PSI	60 PSI	54 PSI	46 PSI	37 PSI	29 PSI	1920 PSI

CN 7091-S



34800 BENNETT • FRASER, MI 48026-1686
 (586) 293-8240 • FAX (586) 293-8469
 (800) 563-8006 • www.mppumps.com

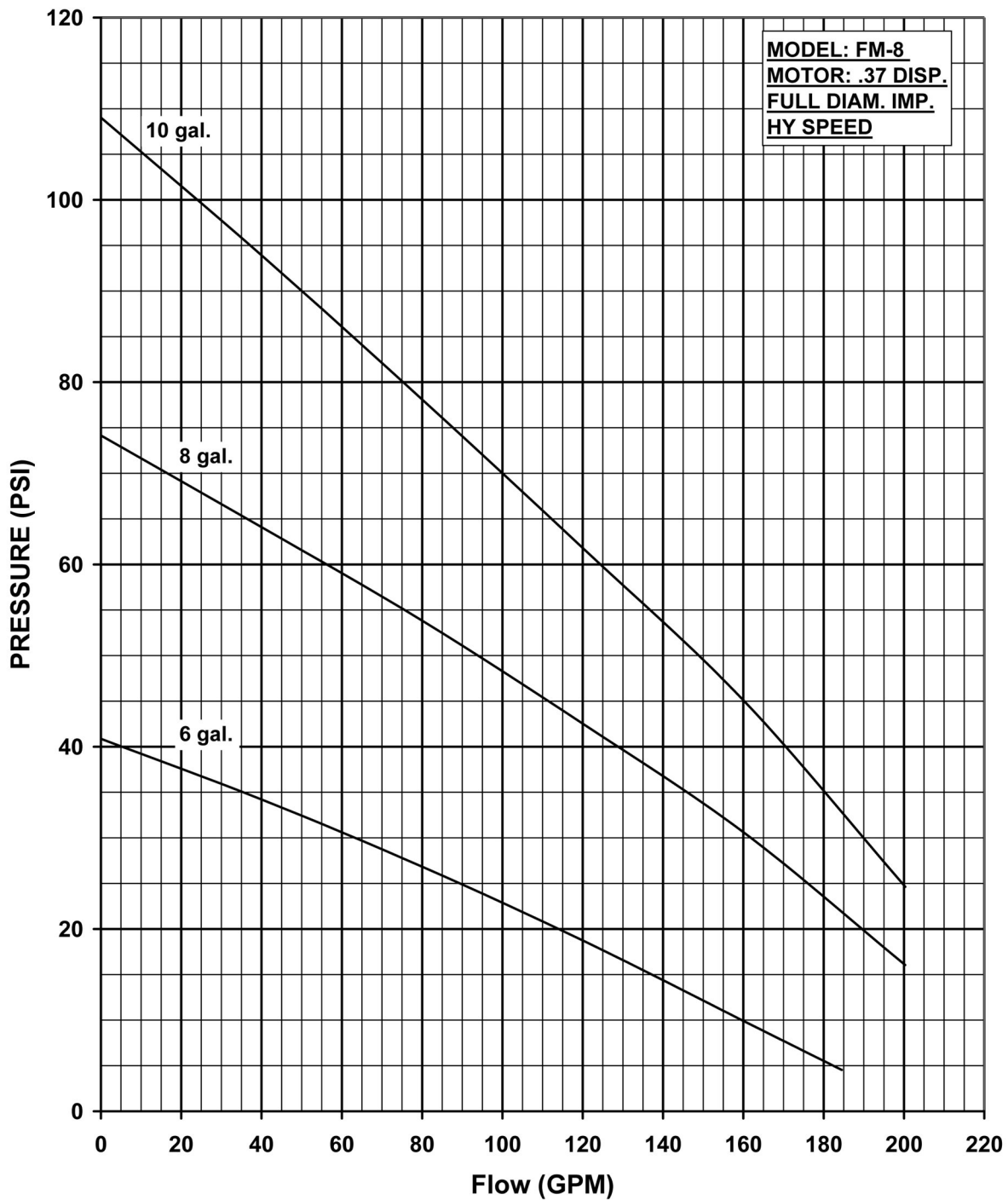


OIL FLOW	SHUT OFF 0 GPM	20 GPM	40 GPM	60 GPM	80 GPM	100 GPM	120 GPM	140 GPM	160 GPM	180 GPM	200 GPM	MAX. HYD. OIL PRESS. REQ.
8 GPM	29 PSI	26 PSI	23 PSI	20 PSI	16 PSI	13 PSI	10 PSI	6 PSI				650 PSI
10 GPM	46 PSI	42 PSI	38 PSI	34 PSI	30 PSI	26 PSI	22 PSI	17 PSI	13 PSI	8 PSI		900 PSI
12 GPM	67 PSI	63 PSI	58 PSI	54 PSI	48 PSI	43 PSI	38 PSI	33 PSI	27 PSI	23 PSI	17 PSI	1300 PSI

CN 7092-S



34800 BENNETT • FRASER, MI 48026-1686
 (586) 293-8240 • FAX (586) 293-8469
 (800) 563-8006 • www.mppumps.com

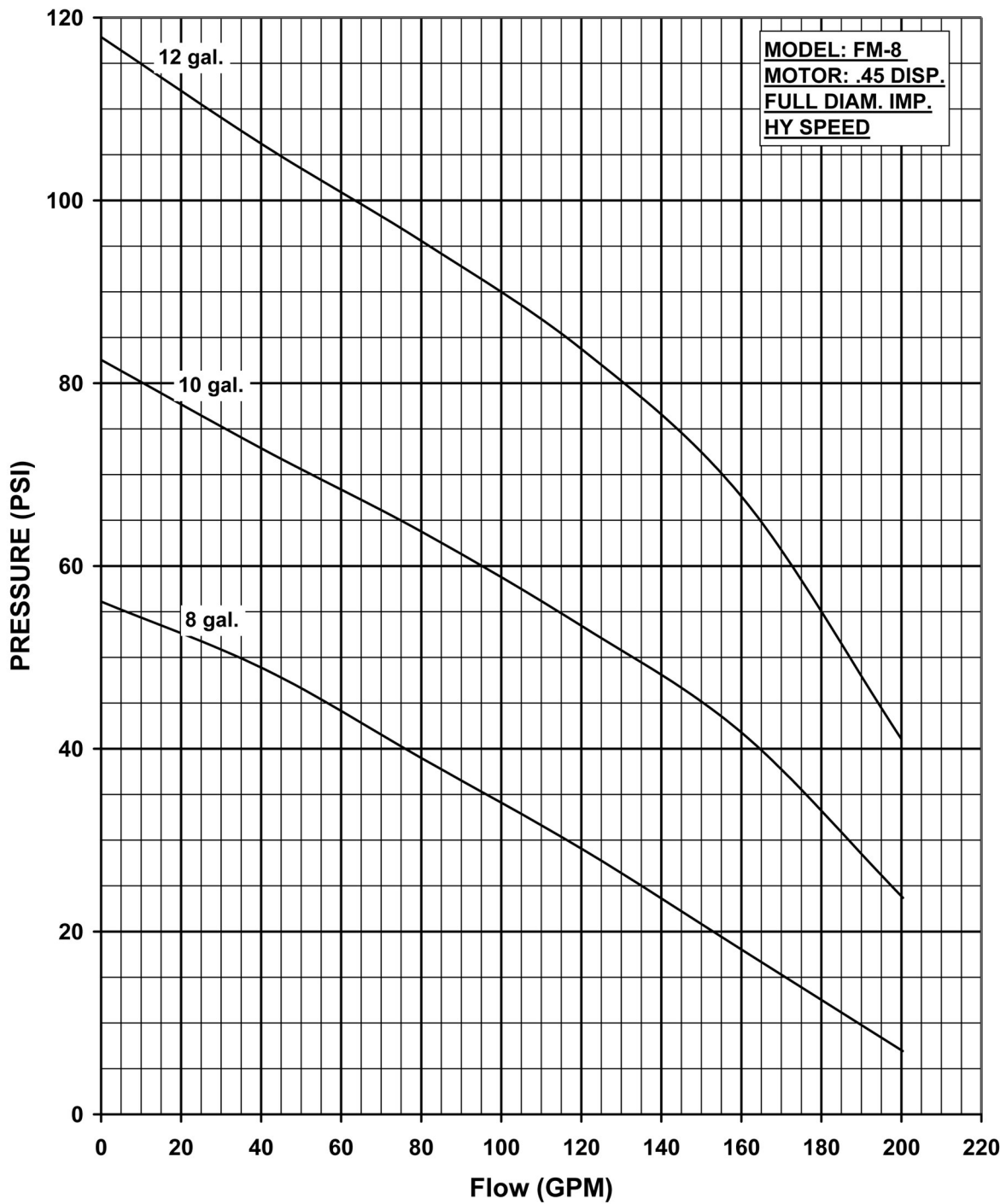


OIL FLOW	SHUT OFF	20	40	60	80	100	120	140	160	180	200	MAX. HYD. OIL PRESS. REQ.
	0 GPM	GPM	GPM	GPM	GPM	GPM	GPM	GPM	GPM	GPM	GPM	
6 GPM	41 PSI	38 PSI	34 PSI	31 PSI	27 PSI	22 PSI	18 PSI	14 PSI	10 PSI	5 PSI		1250 PSI
8 GPM	74 PSI	69 PSI	64 PSI	59	54 PSI	48 PSI	43 PSI	37 PSI	31 PSI	24 PSI	16 PSI	1950 PSI
10 GPM	109 PSI	102 PSI	94 PSI	86 PSI	78 PSI	70 PSI	62 PSI	54 PSI	45 PSI	35 PSI	25 PSI	2350 PSI

CN 7093-S



34800 BENNETT • FRASER, MI 48026-1686
 (586) 293-8240 • FAX (586) 293-8469
 (800) 563-8006 • www.mppumps.com

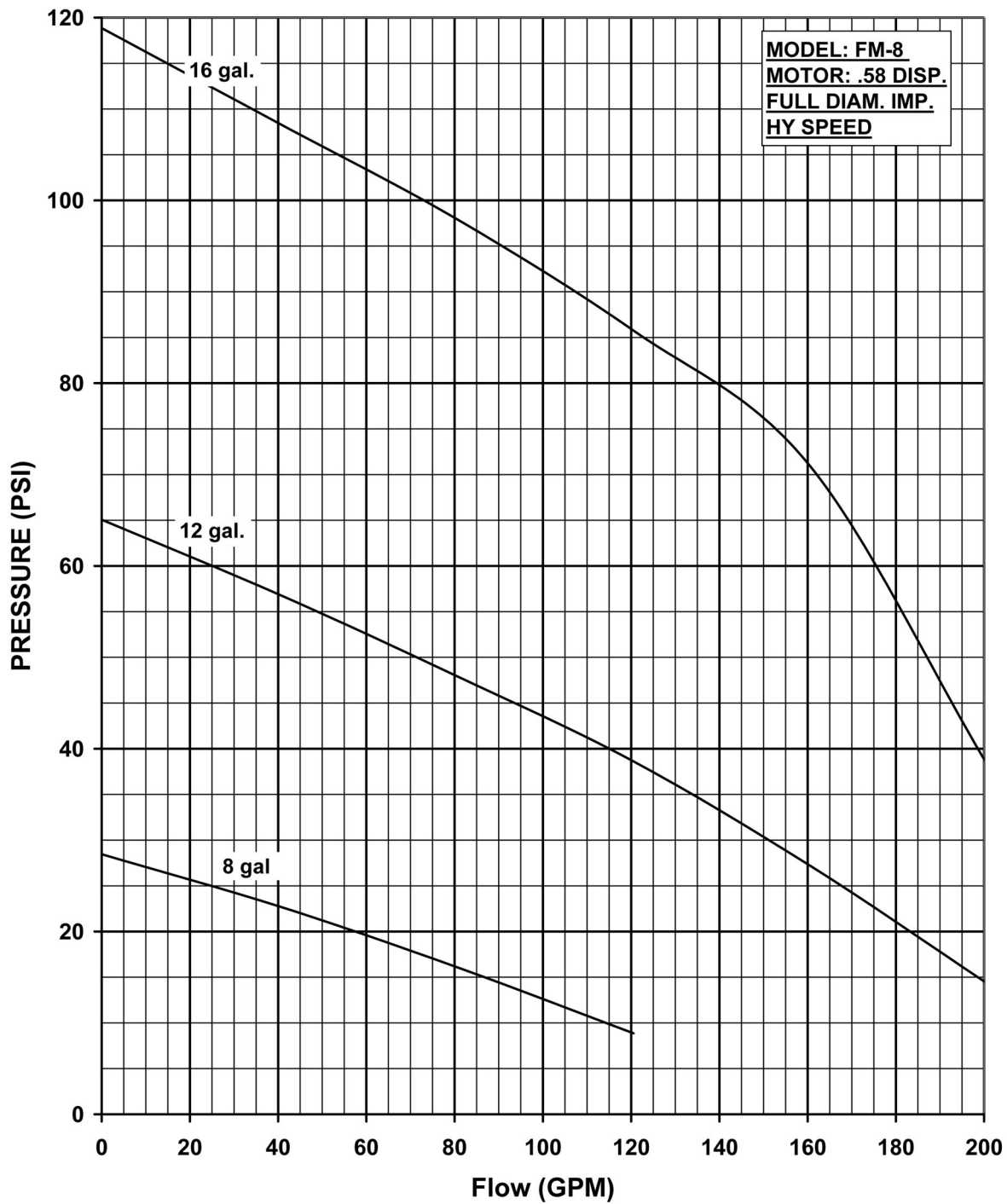


OIL FLOW	SHUT OFF 0 GPM	20 GPM	40 GPM	60 GPM	80 GPM	100 GPM	120 GPM	140 GPM	160 GPM	180 GPM	200 GPM	MAX. HYD. OIL PRESS. REQ..
8 GPM	53 PSI	49 PSI	44 PSI	41 PSI	37 PSI	33 PSI	28 PSI	24 PSI	18 PSI	14 PSI	8 PSI	1250 PSI
10 GPM	82 PSI	77 PSI	73 PSI	68 PSI	64 PSI	59 PSI	54 PSI	48 PSI	42 PSI	34 PSI	24 PSI	1850 PSI
12 GPM	118 PSI	110 PSI	105 PSI	100 PSI	96 PSI	90 PSI	83 PSI	76 PSI	67 PSI	54 PSI	37 PSI	2450 PSI

CN 7094-S



34800 BENNETT • FRASER, MI 48026-1686
 (586) 293-8240 • FAX (586) 293-8469
 (800) 563-8006 • www.mppumps.com

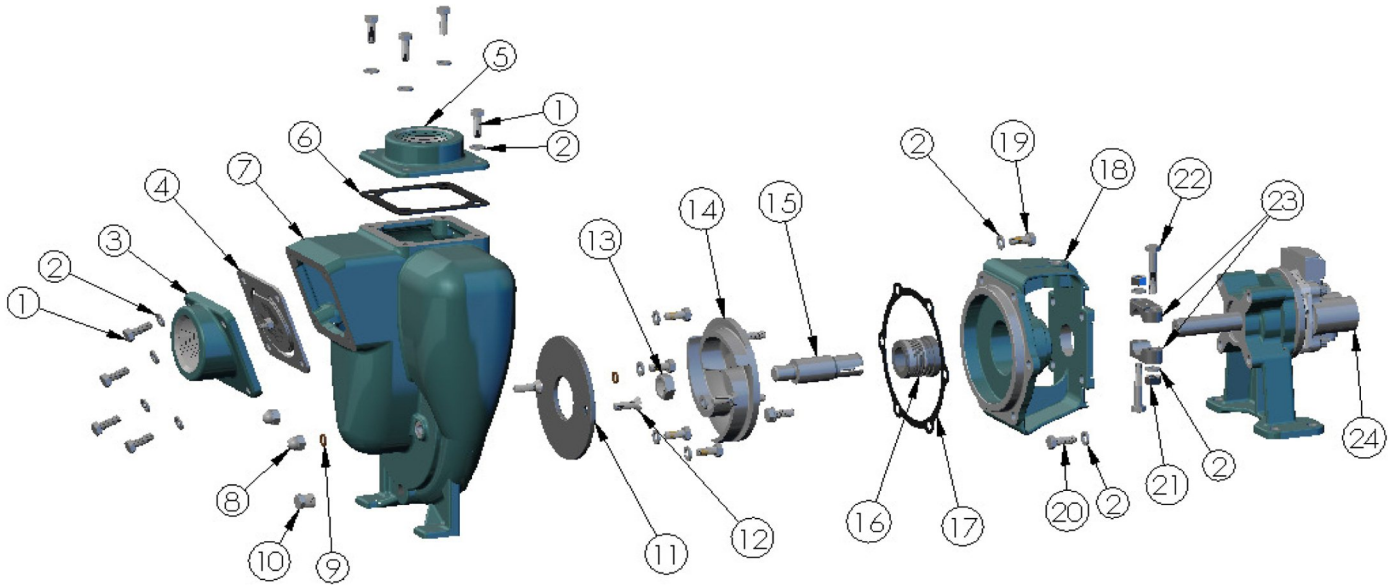


OIL FLOW	SHUT OFF 0 GPM	20 GPM	40 GPM	60 GPM	80 GPM	100 GPM	120 GPM	140 GPM	160 GPM	180 GPM	200 GPM	MAX. HYD. OIL PRESS. REQ..
8 GPM	28 PSI	26 PSI	23 PSI	20 PSI	16 PSI	13 PSI	9 PSI					650 PSI
12 GPM	65 PSI	61 PSI	56 PSI	53 PSI	48 PSI	43 PSI	38 PSI	44 PSI	27 PSI	21 PSI	15 PSI	1250 PSI
16 GPM	119 PSI	113 PSI	106 PSI	102 PSI	98 PSI	93 PSI	86 PSI	80 PSI	72 PSI	56 PSI	39 PSI	1950 PSI

CN 7095-S



34800 BENNETT • FRASER, MI 48026-1686
 (586) 293-8240 • FAX (586) 293-8469
 (800) 563-8006 • www.mppumps.com



ITEM NO.	PART NO.	DESCRIPTION	QTY.		ITEM NO.	PART NO.	DESCRIPTION	QTY.
1	21242	CAPSCREW - 5/16"-18 X 7/8"	8		15	22286	DRIVE SLEEVE SS - 3/4	1
2	21238	LOCKWASHER 5/16	20	*	16	22273	SEAL- VITON	1
3	22387	SUCTION FLANGE- 2" NPT	1	*	17	22255	GASKET	1
*	4	23022	FLAPPER ASY- BUNA	1	18	22247	ADAPTOR	1
5	22311	DISCHARGE FLANGE- 2" NPT	1		19	24965	CAPSCREW- 5/16"-18 X 3/4"	6
*	6	22256	GASKET- BUNA	1	20	21278	CAPSCREW- 5/16"-24 X .88	4
7	22251	HOUSING- CAST IRON	1		21	21284	HEX NUT- 5/16"-18	2
8	21237	ACORN NUT- 5/16"-18	2		22	21264	CAPSCREW- 5/16"-18 X 1 3/4"	2
*	9	21248	GASKET - 1/2 X 5/16 X 1/16	2	23	21946	CLAMP- 3/4 SL	1
10	41475	PIPE PLUG- 1/4" NPT	1		24	35995	.22 DISP. HYD. PEDESTAL ASY	1
*	11	22260	WEAR PLATE	1		34812	.37 DISP. HYD. PEDESTAL ASY	
12	21249	SCREW SS 5/16"-18X1	2			35996	.45 DISP. HYD. PEDESTAL ASY	
13	22655	JAM NUT- 5/8"-18	1			34813	.58 DISP. HYD. PEDESTAL ASY	
14	22293	IMPELLER	1					

* SUGGESTED REPLACEMENT PARTS

** COMPATIBLE FOR KEROSENE, JET A/8 & GASOLINE



34800 BENNETT • FRASER, MI 48026-1686
 (586) 293-8240 • FAX (586) 293-8469
 (800) 563-8006 • www.mppumps.com