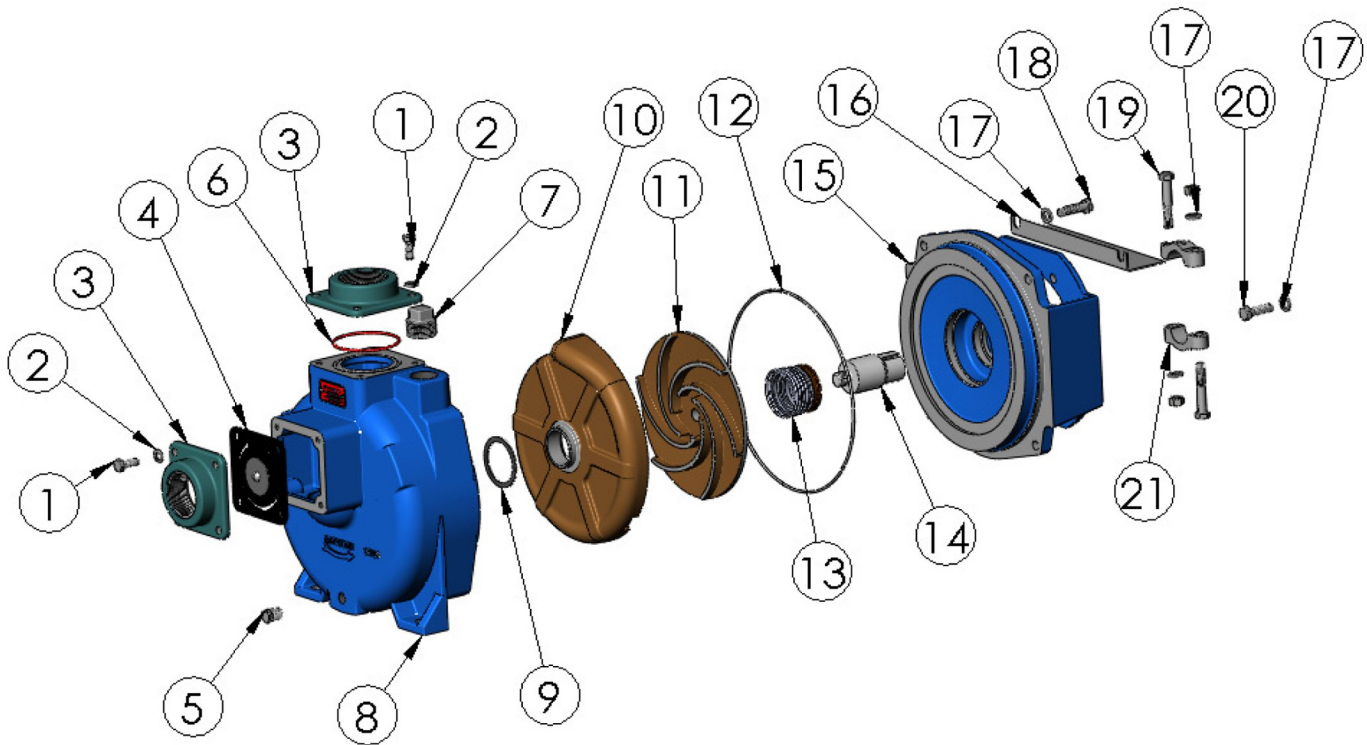


ITEM NO.	PART NO.	DESCRIPTION	QTY.		ITEM NO.	PART NO.	DESCRIPTION	QTY.
1	21242	CAPSCREW - 5/16"-18 X 7/8" - S.S.	8	*	12	28907	O-RING - AS-568-175 - VITON	1
2	21238	LOCKWASHER - 5/16" - S.S.	8	*	13	29533	SEAL - Ø1.5 T-21	1
3	22311	FLANGES- 2" N.P.T. - CAST	2		14	38090	DRIVE SLEEVE S.S. - Ø1.38"	1
*	4	23022	FLAPPER ASSEMBLY	1	15	38091	ADAPTER C.I. - CC MTR	1
5	41475	PIPE PLUG - 1/4" N.P.T. - STL	1		16	29192	CLAMP GUARD - STEEL	1
*	6	37141	O-RING - VITON	1	17	21266	LOCKWASHER - 3/8" - S.S.	10
7	41483	PIPE PLUG - 1" N.P.T.	1		18	21259	HEX HD. CAPSCREW S.S. - 3/8-16 }	4
8	35109	HOUSING - CAST	1		19	21269	HEX HD. CAPSCREW S.S. - 3/8-16 }	2
*	9	28908	GASKET - VITON	1	20	21274	CAPSCREW S.S. - 3/8"-16 X 1.25	4
10	38051	VOLUTE B	1		21	22356	CLAMP S.S. - 1"	2
11	38049	IMPELLER B - Ø7.50	1		22	29339	ADAPTER PLATE STL. - W/ENGINE	1

* SUGGESTED REPLACEMENT PARTS



34800 BENNETT • FRASER, MI 48026-1686
 (586) 293-8240 • FAX (586) 293-8469
 (800) 563-8006 • www.mppumps.com



ITEM NO.	PART NO.	DESCRIPTION	QTY.		ITEM NO.	PART NO.	DESCRIPTION	QTY.
1	21242	CAPSCREW - 5/16"-18 X 7/8" - S.S.	8	*	12	28907	O-RING - AS-568-175 - VITON	1
2	21238	LOCKWASHER - 5/16" - S.S.	8	*	13	29533	SEAL - Ø1.5 T-21	1
3	22311	FLANGES- 2" N.P.T. - CAST	2		14	38825	DRIVE SLEEVE S.S. - Ø1.0"	1
*	4	23022	FLAPPER ASSEMBLY	1	15	38094	ADAPTER C.I. - PEM	1
5	41475	PIPE PLUG - 1/4" N.P.T. - STL	1		16	29192	CLAMP GUARD - STEEL	1
*	6	37141	O-RING - VITON	1	17	21266	LOCKWASHER - 3/8" - S.S.	10
7	41483	PIPE PLUG - 1" N.P.T.	1		18	21259	HEX HD. CAPSCREW S.S. - 3/8-16 X	4
8	35109	HOUSING - CAST	1		19	21269	HEX HD. CAPSCREW S.S. - 3/8-16 X	2
*	9	28908	GASKET - VITON	1	20	21274	CAPSCREW S.S. - 3/8"-16 X 1.25	4
10	38051	VOLUTE B	1		21	22356	CLAMP S.S. - 1"	2
11	38049	IMPELLER B - Ø7.50	1					

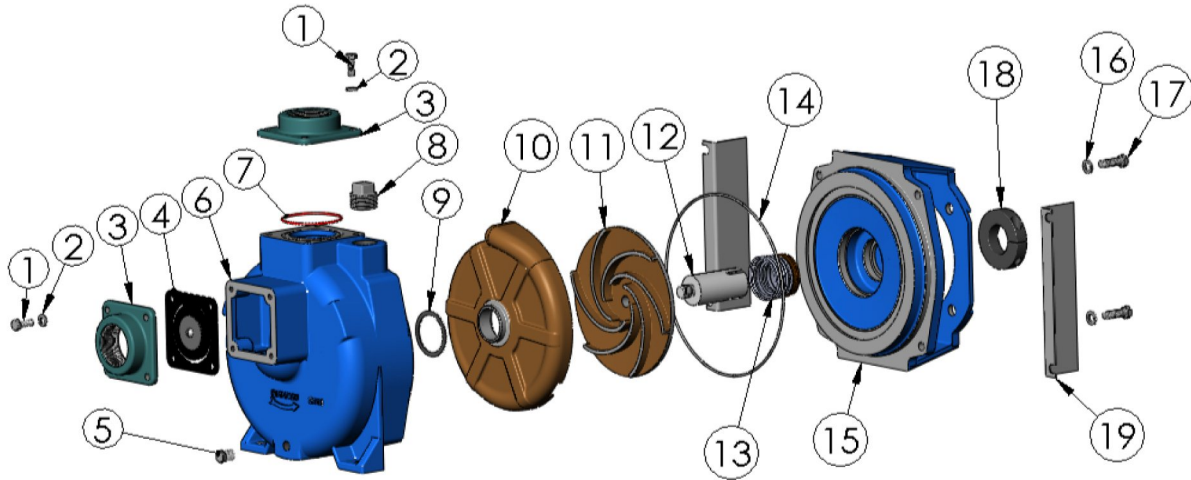
*** SUGGESTED REPLACEMENT PARTS**



34800 BENNETT • FRASER, MI 48026-1686
 (586) 293-8240 • FAX (586) 293-8469
 (800) 563-8006 • www.mppumps.com

HHLF "HIGH OUTPUT"

38093



ITEM NO.	PART NO.	DESCRIPTION	QTY.	ITEM NO.	PART NO.	DESCRIPTION	QTY.
1	21242	CAPSCREW - 5/16"-18 X 7/8" - S.S.	8	11	38049	IMPELLER B - Ø7.50	1
2	21238	LOCKWASHER - 5/16" - S.S.	8	12	38090	DRIVE SLEEVE S.S. - Ø1.38"	1
3	22311	FLANGES- 2" N.P.T. - CAST	2	* 13	29533	SEAL - Ø1.5 T-21	1
* 4	23022	FLAPPER ASSEMBLY	1	* 14	28907	O-RING - AS-568-175 - VITON	1
5	41475	PIPE PLUG - 1/4" N.P.T. - STL	1	15	38091	ADAPTER C.I. - CC MTR	1
6	35109	HOUSING - CAST	1	16	21266	LOCKWASHER - 3/8" - S.S.	6
* 7	37141	O-RING - VITON	1	17	21274	CAPSCREW - 3/8"-16 X 1.25 - S.S.	4
8	41483	PIPE PLUG - 1" N.P.T.	1	18	31312	CLAMP STL. - 1.5 I.D.	1
* 9	28908	GASKET - VITON	1	19	29192	CLAMP GUARD - STEEL	2
10	38051	VOLUTE B	1				

* SUGGESTED REPLACEMENT PARTS



34800 BENNETT • FRASER, MI 48026-1686
 (586) 293-8240 • FAX (586) 293-8469
 (800) 563-8006 • www.mppumps.com