

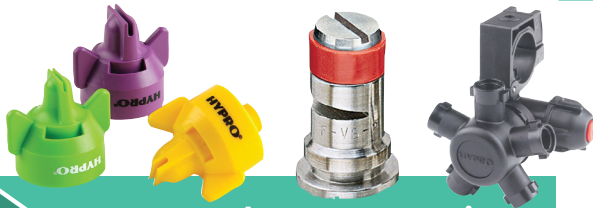


SPRING SPRAYING EQUIPMENT

Deep Inventories. Same Day Shipping. Real Sales Staff to Help. The Right Parts When You Need Them.



Scan our QR code to request a free catalog!



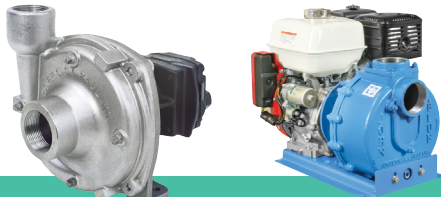
2-8

Spray Nozzles & Accessories



11-16

Banjo Valves, Fittings & Strainers



9

Sprayer & Transfer Pumps



21

Tanks



10

12V Sprayer Valves



18-23

Mini-Bulk Pumps & Fuel Equipment

24/7 Online Ordering

Huge Inventories

FREE FREIGHT



Same Day Shipping

Technical Support

* On Orders \$2500+








SALES: 888-357-7217

OMAHA, NE • DAVENPORT, IA









* Continental U.S. Only. Tanks, Pipe & Sprayers Excluded. Prices Subject to Change Without Notice.

DULTMEIER.COM

APPROVED TEEJET NOZZLES FOR LIBERTY, ENLIST, ENLIST DUO, ROUNDUP, ENGENIA, TAVIUM & XTENDIMAX

TIP	CATALOG	PATTERN	DROPLET SIZE	BEST FOR
	Turbo TeeJet® (TT)		Medium to Coarse	Liberty®, Contact Herbicides
	Turbo TwinJet® (TTJ60)		Medium to Coarse	Liberty®, Contact Herbicides
	Air Induction Turbo TwinJet® (AITTJ60)		Medium to Ultra Coarse	Enlist One®, Enlist Duo®, Roundup®, Contact Herbicides
	Air Induction Extended Range (AIXR)		Coarse to Very Coarse	Enlist One®, Enlist Duo®, Roundup®
	Air Induction (AI/AIC)		Very Coarse to Extremely Coarse	Enlist One®, Enlist Duo®, Roundup®, Engenia®, Tavium®, XtendiMax®
	TTI TwinJet® (TTI60)		Medium to Ultra Coarse	Enlist One®, Enlist Duo®, Roundup®, Engenia®, Tavium®, XtendiMax®
	Turbo TeeJet® Induction (TTI)		Extremely Coarse to Ultra Coarse	Enlist One®, Enlist Duo®, Roundup®, Engenia®, Tavium®, XtendiMax®
	AccuPulse® TwinJet® (APTJ)		Extremely Coarse to Ultra Coarse	Enlist One®, Enlist Duo®, Roundup®, Engenia®, Tavium®, XtendiMax®

Liberty and Liberty ULTRA recommended spray tips

TIP	CATALOG	PATTERN	DROPLET SIZE	CONSTANT FLOW SYSTEMS	PWM SYSTEMS	BEST FOR
	Turbo TeeJet (TT)		Coarse to Medium	<input type="checkbox"/>	<input type="checkbox"/>	Liberty or Liberty ULTRA
	Turbo TwinJet (TTJ60)		Coarse to Medium	<input type="checkbox"/>	<input type="checkbox"/>	Liberty or Liberty ULTRA
	Air Induction Turbo TwinJet (AITTJ60)		Ultra Coarse to Medium	<input type="checkbox"/>	<input type="checkbox"/>	Liberty or Liberty ULTRA+ Enlist One
	Air Induction XR (AIXR)		Very Coarse to Coarse	<input type="checkbox"/>	<input type="checkbox"/>	Liberty or Liberty ULTRA+ Enlist One

Air Induction AIXR Flat Spray Tips Extended Range (15 to 90 PSI); 110°

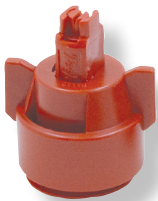
Features

- The most versatile air induction nozzle on the market
- Low drift potential (up to 90% drift reduction)
- 110° Wide, tapered flat spray angle with air induction technology. 15-90 PSI operating pressure.
- Made of a two-piece UHMWPE polymer construction with VisiFlo® color coding. Excellent chemical resistance and exceptional wear life.
- Removable pre-orifice for easy cleaning.



Nozzle Only

- Use CP114440A Quick TeeJet® cap
- Use CP114442A Quick TeeJet® cap + Gasket for 08 & 10 sizes.



AIXR Nozzle Combo
with Tip, Cap & EPDM
Gasket



Part No.

Part No.	Description	Net Ea.
SS AIXR110015VP thru 11006VP	Nozzle Only. Use Cap #SS CP114440A.....	\$ 6.70
SS AIXR11008VP thru 11010VP	Nozzle Only. Use Cap #SS CP114442A.....	8.00
SS AIXR110015VP-CE thru 11006VP-CE	Nozzle Assembly.....	8.30
SS AIXR11008VP-CE thru 11010VP-CE	Nozzle Assembly.....	9.60

* Pkg. in 25

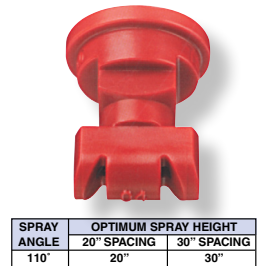
10% Quantity Discount on 50+ Of One Size

TTJ60 Turbo TwinJet® Polymer Flat Spray Tips with VisiFlo® Color Coding

Typical Applications:

- Twin 110° Flat Fan Spray Widths
- Excellence for pre-emerge surface applied herbicides & insecticides - minimum spray pressure of 20 PSI.
- Great for post-emerge contact herbicides & insecticides - typical pressures of 40 PSI and higher.
- Excellent for fungicide application.

HERBICIDE SOIL APPLIED	FUNGICIDE CONTACT	INSECTICIDE CONTACT	DRIFT CONTROL	PWM APPROVED
GOOD	EXCELLENT	EXCELLENT	VERY GOOD	
EXCELLENT	VERY GOOD	VERY GOOD		
VERY GOOD				



TTJ60 Nozzle Combo
with Tip, Cap & EPDM Gasket

Features:

- Tip produces dual, tapered edge, wide angle, flat spray pattern for effective canopy penetration and uniform coverage in broadcast spraying.
- 110° Flat Fans & 60° between leading & trailing spray patterns.
- Large, round free passages to minimize clogging.
- All acetel construction for excellent chemical and wear resistance.
- Larger droplet size than TT Nozzles for improved drift control.
- Automatic spray alignment with CP114440A Quick TeeJet cap.
- Spray pressure range: 20-90 PSI.
- All sizes suitable with PWM Spray Systems.

Part No.

Part No.	Description	Net Ea.
SS TTJ6011002VP thru 11010VP	Turbo TwinJet Tip Only Use CP114440A Caps & 19438 Gasket	\$ 7.50
SS TTJ60-11002VP-CE thru 11010VP-CE	Nozzle Assembly Includes Tip, Cap and EPDM Gasket.....	8.70

* Pkg. in 25

10% Quantity Discount on 50+ Of One Size

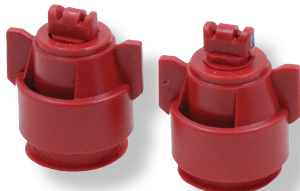
TEEJET NOZZLES

TeeJet® Air Induction Turbo TwinJet® AITTJ60 with VisiFlo® Color Coding - Tips Only



Typical Applications:

- Excellent for more intensive penetration of thick foliage & achieving high rates of coverage with fungicides, insecticides or contact herbicides.
- Two spray patterns spraying 60° apart, one in the forward direction of travel; one in the rear.
- Good lateral coverage on vertical target areas. 20-90 PSI.
- Sizes available to meet a wide range of speeds & application rates.
- Automatic spray alignment with SS CP114442A Quick TeeJet cap (02-06).
- Automatic spray alignment with SS CP114501A Quick TeeJet cap (08-15).



AITTJ60 Nozzle Combo with Tip, Cap & EPDM Gasket

Features:

- Air Induction with dual 110° flat fan patterns.
- 60° between leading & trailing spray patterns.
- Best suited for post emergence applications.
- Excellent drift control with coarse to very coarse droplets.
- **Great for Enlist One & Enlist Duo roundup.**
- All sizes suitable with PWM Spray Systems.

Part No.		Net Ea.
SS AITTJ11002VP thru 11006VP	Turbo TwinJet Tip Only Use SS CP114442A Caps & Gasket.....	\$ 7.80
SS AITTJ11008VP thru 110015VP	Turbo TwinJet Tip Only Use SS CP114501A Caps & Gasket	8.60
SS AITTJ11002VP-CE thru 11006VP-CE	Turbo TwinJet Nozzle Assembly, Includes Tip, Cap & EPDM Gasket	9.10
SS AITTJ11008VP-CE thru 110015VP-CE	Turbo TwinJet Nozzle Assembly, Includes Tip, Cap & EPDM Gasket	10.90

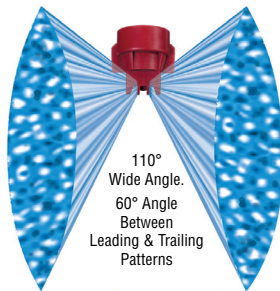
* 10% Quantity Discount on 50+ Of One Size

TeeJet® TTI TwinJet® Twin Flat Induction Tips

The TTI60 TeeJet Air Induction Twin Flat Spray Tip provides extremely large droplets for maximum drift control along with the improved coverage of a twin spray pattern. Ideal for the application of systemic, post-emerge herbicides.

Features:

- TTI60 produces two 110° wide angle, flat spray patterns for uniform coverage in broadcast applications.
- 60° Angle between leading & trailing patterns for increased canopy penetration & leaf coverage.
- Extremely large drift resistant droplets are produced through the use of a venturi air aspirator.
- Provides excellent drift control & produces minimal driftable fines - less than 1.5%.
- All in one molded nozzle and Quick TeeJet® cap design provides automatic spray alignment.
- Acetal construction for excellent chemical & wear resistance.
- Removable pre-orifice allows for disassembly & cleaning.
- Suggested spray pressure range of 20-100 PSI.
- All sizes suitable with PWM Spray Systems.



Great for Enlist One, Enlist Duo, Roundup, Engenia, Tavium & XTendiMax

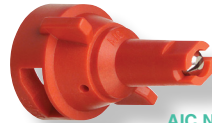


Part No.	Net Ea.
SS TTI6011002VP thru 11006VP Twin Flat Air Induction Tips/Caps/Gaskets	\$ 12.80

* 10% Quantity Discount on 50+ Of One Size

Air Induction Nozzles (AI & AIC)

- Stainless steel insert produces a tapered edge flat spray pattern for uniform coverage in broadcast spraying.
- Air induction spray tip, producing large air-filled droplets through the use of a Venturi air aspirator more resistant to drift.
- Available in 80° or 110° spray angles with a Polymer insert holder and pre-orifice with VisiFlo® color-coding.
- Automatic spray alignment with 114443A-CLER Quick TeeJet® cap and gasket.



AIC Nozzle Assembly

Approved for Enlist One, Enlist Duo, Roundup, Engenia, Tavium & XTendiMax



Tip Only

Part No.		Net Ea.
SS AI80015VS thru AI8006VS	Nozzles Only, 80°	\$ 12.00
SS AI110015VS thru AI11008VS	Nozzles Only, 110°	12.00
SS AIC110015VS thru AIC11015VS	Nozzle Cap Assembly with Gasket *	13.30
SS AIC110025VK thru AIC11005VK	Nozzle Cap Assembly with Gasket *	10.70
SS AIC110025VP thru AIC11010VP	Nozzle Cap Assembly	6.20

* Tip/Cap Combination.

10% Quantity Discount on 50+ Of One Size

Turbo TeeJet™ Polymer Flat Spray Tips



- Tapered edge, wide angle flat pattern for uniform coverage in broadcast spraying.
- Large, round free passages to minimize clogging. 110° Spray pattern.
- Excellent resistance to corrosive solutions.
- Larger droplets for less drift; smaller droplets for best coverage.
- Automatic spray alignment with CP114440A Quick TeeJet® cap.
- Use CP114501 Cap for 10 & 12 Sizes.
- All sizes suitable with PWM Spray Systems.



TT Nozzle Combo with Tip, Cap & EPDM Gasket

Approved for Liberty & Contact Herbicides

Part No.		Net Ea.
SS TT11001VP thru 11008VP	Turbo TeeJet Tip Only. Use with Cap CP114440A.	\$ 6.00
SS TT11010VP thru 11012VP	Turbo TeeJet Tip Only. Use with Cap CP114501xxx	7.60
SS TT11001-VP-CE thru 11008-VP-CE	Nozzle Assembly, Tip, Cap & EPR Gasket.....	7.60
SS TT11010-VP-CE thru 11012-VP-CE	Nozzle Assembly, Tip, Cap & EPR Gasket.....	9.20

* 10% Quantity Discount on 50+ Of One Size

ACCUPULSE® TWINJET®

Twin Tapered Flat Spray Tips

Designed Specifically for Use with PWM Sprayer Controls, Offering Maximum Drift Control

The AccuPulse uses a patent pending recirculating design, that allows this tip to produce highly drift resistant, XC and UC droplets without the use of air induction. This spray tip was designed specifically for use on sprayers equipped with Pulse Width Modulation (PWM) sprayer controls. The compact size and choice of numerous capacities will suite the needs of a wide range of application rates and sprayers. The droplet size spectrum and twin spray pattern of AccuPulse make it ideal for a variety of pre- and post-applications of systemic herbicides including glyphosate and dicamba.

- Twin 110° pattern (30° forward & 30° backward).
- Fits into standard cap: SS CP114440A.

Part No.	Net Ea.	
SS APTJ110015VP thru 11012VP	AccuPulse TwinJet Nozzle Only.....	\$ 10.40
SS APTJ110015VP-CE thru 11012VP-CE	AccuPulse TwinJet Nozzle Cap Assembly with Gasket.....	8.00

* 10% Quantity Discount on 50+ Of One Size

COLOR-CODED "QUICK TEEJET" CAPS FOR INSTANT NOZZLE TIP IDENTIFICATION

QuickJet Caps are available in 13 colors, and 11 different styles enabling you to develop your own color coding system. The caps are designed with grooves that fit locating lugs on the nozzle body. Caps are made of Celcon and are available for use with all spray tips used in TeeJet nozzles.



ORDERING INFORMATION

QUICK TEEJET CAPS	PART NUMBER		FOR USE WITH FLAT SPRAY TIPS 300 PSI MAXIMUM PRESSURE
	QUICK TEEJET CAP ONLY	QUICK TEEJET CAP & SEAT GASKET SET	
	CP114440A*-CE	114441A*-CELR	TeeJet® Flat Spray Tips (Smaller Capacities) TP Standard -0067 to -08, XR TeeJet® -01 to -08, Turbo TwinJet® (TTJ60), AIXR TeeJet® -015 to -06, AccuPulse® TwinJet® (APTJ)
		114441A*-CELVI	DG TeeJet®, Turbo TeeJet® (TT) -01 to -08, OC TeeJet® & TQ150
	CP25611-9-PP ¹	25612-9-PP ¹	
	CP25609*-NY	25610*-NYR	TeeJet Flat Spray Tips (Larger Capacities) TP Standard -10 to -20, XR TeeJet® -10 to -15
	CP114442A*-CE	114443A*-CELR	TJ60, AI TeeJet® & AIUB TeeJet®, AI Turbo TwinJet® (AITTJ60) -02 to -06, Turbo TeeJet® Induction (TTI) -01 to -06, DG TwinJet®, SJ3 StreamJet, AIXR TeeJet® -08 to -10
		114443A*-CELVI	
	CP115834A*-CE	115835A*-CELR	Turbo TeeJet® Induction (TTI) -01 to -06
		115835A*-CELVI	
	CP114501A*-CE ⁶	114502A*-CELR ⁶	AI Turbo TwinJet® (AITTJ60) -08 to -15, Turbo TeeJet® Induction (TTI) -08 to -10, Turbo TeeJet® (TT) -10 to -12
		114502A*-CELVI ⁶	
	CP98578-1-NY ²	98579-1-NYR ²	AI3070
	CP25595*-NY	25596*-NYR	TeeJet Flat Spray Tips (Smaller Capacities) Tips can be positioned in choice of two spray plane directions—parallel or perpendicular to wings of Quick TeeJet cap.
	CP25599*-NY	25600*-NYR	Turbo FloodJet®, TK-VP FloodJet®, TK-VS FloodJet®, Locating Nib
	CP114444A*-CE	114445A*-CELR	TK FloodJet®, TX/TXA ConeJet®, AITXA ConeJet®, 4916 Flow Regulator, Disc, Core, Seal, CP18999-EPR (EPDM - Standard), CP18999-VI (FKM - Optional)
		114445A*-CELVI	
	CP25607-9-PP ¹	25608-9-PP ¹	FL FullJet®, TG Full Cone, Hose Shank, XE TeeJet
	CP25607*-NY	—	Disc, Core, Seal, CP18999-EPR, Disc-Core (Insert Core into Seal)

*Specify color code (see chart above).

¹ These caps only available in gray.

² These caps only available in black.

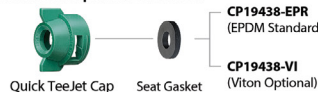
³ Color available in CP114440A, CP114442A and CP114444A caps.

⁴ Color available in CP114440A, CP114442A and CP114501A caps.

⁵ Color available in CP114501A and CP114440A caps.

⁶ This cap offered in Black, White, Light Green, Light Blue and Raspberry Red only.

Quick TeeJet Cap & Seat Gasket Set



*Caps only are supplied less gaskets

COLOR CODE

1	2	3	4	5	6	7	8	9	10	11	12	13
Black	White	Red	Blue	Green	Yellow	Brown	Orange	Gray	Violet ³	Lt. Blue ⁴	Raspberry Red ⁵	Lt. Green ⁵

QuickJet Caps Less Gasket - Specify Color Number

Part No.	1 BLACK	2 WHITE	3 RED	4 BLUE	5 GREEN	6 YELLOW	7 BROWN	8 ORANGE	9 GRAY	10 VIOLET	11 LT. BLUE	12 RASP. RED	13 LT. GREEN
SS CP114440A	X	X	X	X	X	X	X	X	X	X	X	X	X
SS CP25611-9PP ¹									X				
SS CP25609	X	X	X	X	X	X	X	X	X	X	X	X	X
SS CP114442A	X	X	X	X	X	X	X	X	X	X	X	X	X
SS CP115834A	X	X	X	X	X	X	X	X	X	X	X	X	X
SS CP114501A	X	X	X	X	X	X	X	X	X	X	X	X	X
SS CP98578-1NY	X	X	X	X	X	X	X	X	X	X	X	X	X
SS CP25595	X	X	X	X	X	X	X	X	X	X	X	X	X
SS CP25599	X	X	X	X	X	X	X	X	X	X	X	X	X
SS CP114444A	X	X	X	X	X	X	X	X	X	X	X	X	X
SS CP25607	X	X	X	X	X	X	X	X	X	X	X	X	X

x = Cap is available in that color. *Polypropylene Caps (9) are an additional 15%. † = Includes CP23308 Hardi EPDM Gasket. If using TeeJet Strainer, CP26227 Gasket is Required.



Quick TeeJet Caps are designed with grooves that fit locating lugs on the nozzle body. Caps are made of Nylon and are available for use with all TeeJet Spray Tips.

FOR PRESSURES UP TO 300 PSI



Celcon QuickJet Cap - CP114440A, CP114442A & CP25607

CAP VARIATIONS

	QJ4676-1/4CEL 1/4" FPT Adapter Has 1/4" FPT thread for drop pipe, pressure gauge, etc. Available in Black only with EPDM Gasket
	QJ19843CEL Blank Cap with Gasket To Temporarily shut-off selected Nozzles Available in Black only with EPDM Gasket
	QJ4676-45-1/4 45° Quick TeeJet Cap with 1/4" FPT With EPDM Gasket
	QJ4676-90-1/4 90° Quick TeeJet Cap with 1/4" FPT With EPDM Gasket
	50854NYB Use with Quick TeeJet nozzle bodies to extend body length by 1". Used to eliminate interference of spray pattern with sprayer boom. Nylon body. EPDM gasket.



Part No.	Description	Net Ea.
SS QJ4676-1/4CEL	Threaded Cap, 1/4" FPT with Gasket	\$ 2.85
SS QJ19843CEL	Blank Cap With Gasket	2.30
SS 50854NYB	Extender Cap with Gasket	3.80
SS QJ4676-45-1/4	45° Quick TeeJet Cap, 1/4" FPT	4.40
SS QJ4676-90-1/4	90° Quick TeeJet Cap, 1/4" FPT	4.30
SS 19438EPR	Single EPDM Gasket for QuickJet Caps	1.10
SS 19438VI	Single Viton® Gasket for QuickJet Caps	2.70
SS PK19438EPR	Pkg. of 12 EPDM Gaskets for QuickJet Caps	8.90
SS PK19438VI	Pkg. of 12 Viton® Gaskets for QuickJet Caps	24.80

Quick TeeJet NOZZLE ACCESSORIES

TeeJet

QJ370 Nozzle Body Turrets High Flow Rates In A Compact Design Viton®

Wet Boom
Style



Dry Boom
Style-Simply Add
Hose Connectors

- Compact high flow nozzle body with choice of 3 or 5 Outlets & 1/2", 3/4" or 1".
- Positive indexing and shut-off between each spray position.
- Flow rate for three outlet: 2.6 GPM @ 5 PSI; 3.6 GPM @ 10 PSI.
- Flow rate for five outlet: 2.4 GPM @ 5 PSI; 3.4 GPM @ 10 PSI.
- Available with 1/2", 3/4" & 1" single or double hose barb.
- 10 PSI diaphragm check standard; 2 PSI available.
- Maximum pressure of 300 PSI.
- Viton® o-rings and diaphragm.
- Hinged upper clamp & stainless steel bolt with captured nut reduces installation time.
- Automatic spray tip alignment for use with Quick TeeJet® caps.
- Notched inlet tube reduces sediment buildup.
- Mounts to 3/8" hole in pipe (Wet Boom Style).
- Body features mounting lugs for use with TeeJet® Vari-Spacing clamps for attaching to dry boom sprayers.

Wet Boom Versions:

Part No.	Description	Net Ea.
SS QJ373-3/4NYB	3 Outlet QuickJet Nozzle Body for 3/4" Pipe	\$ 9.40
SS QJ373-1NYB	3 Outlet QuickJet Nozzle Body for 1" Pipe	9.20
SS QJ375-3/4NYB	5 Outlet QuickJet Nozzle Body for 3/4" Pipe	8.70
SS QJ375-1NYB	5 Outlet QuickJet Nozzle Body for 1" Pipe	9.60

Hose Barbs for Dry Boom Versions:

Part No.	Size	Description	Net Ea.
SS CP38938NYB	3/4"	Single Hose Connector w/ 3/8" Inlet Port	2.40
SS CP38940NYB	1"	Single Hose Connector w/ 3/8" Inlet Port	2.40
SS CP38939NYB	3/4"	Double Hose Connector w/ 3/8" Inlet Port	2.60
SS CP38941NYB	1"	Double Hose Connector w/ 3/8" Inlet Port	2.70

Poly Strainers with Stainless Screens

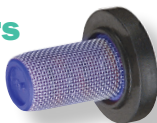
Part No.	Mesh	Std. Pkg.	Net Ea.
SS 8079-PP24	24- White	100	\$ 1.20
SS 8079-PP50	50- Blue	100	1.50
SS 8079-PP80	80- Yellow	100	2.20
SS 8079-PP100	100- Green	100	1.60
SS 8079-PP200	200- Lt. Pink	100	1.30

* Less 10% on 100



TeeJet Retained Tip Strainers

Strainer and gasket as a single unit - keeps strainer attached to the tip and cap when removed from the nozzle body. Designed for AIC and XRC tips but can be used with any QuickJet Caps.



Part No.	Mesh	Net Ea.
SS 55215-50V1	50M Blue Poly Strainer with Viton® Gasket	\$ 3.60
SS 55215-100V1	100M Green Poly Strainer with Viton® Gasket	3.20
SS 55215-50	50M Blue Poly Strainer with EPR Gasket	1.90
SS 55215-100	100M Green Poly Strainer with EPR Gasket	1.90

For Nozzle Caps, See Previous Page



QJ360 Nozzle Assemblies Less Caps

QJ360 Nozzle Assemblies
for Wet or Dry Booms



QJ364



QJ365



QJ363



CP38938NYB
CP38940NYB



CP38939NYB
CP38941NYB

Available in 3, 4 or 5 nozzle style with Viton® diaphragm. Pressures to 300 PSI. 2.25 GPM @ 5 PSI and 3.20 GPM @ 10 PSI.

For wet pipe booms use either 3/4" or 1". For dry booms always use the 3/4NYB version and add the 1/2", 3/4" or 1" single or double hose connectors. For dry boom mounting use QJ Round or Square Vari-Spacing clamps below.

Standard Check Pressure is 10 PSI.
(2, 5, 8, 15 & 20 PSI also available)

Part No.	Size	Description	Net Ea.
SS QJ363-34NYBVI	3/4"	3-Nozzle Assembly, Viton®, Less Connector	\$ 15.40
SS QJ363-1NYBVI	1"	3-Nozzle Assembly, Viton®, Less Connector	17.00
SS QJ364-34NYBVI	3/4"	4-Nozzle Assembly, Viton®, Less Connector	17.00
SS QJ364-1NYBVI	1"	4-Nozzle Assembly, Viton®, Less Connector	17.00
SS QJ365-34NYBVI	3/4"	5-Nozzle Assembly, Viton®, Less Connector	16.40
SS QJ365-1NYBVI	1"	5-Nozzle Assembly, Viton®, Less Connector	20.20
SS CP38938NYB	3/4"	Single Hose Connector w/ 3/8" Inlet Port	2.40
SS CP38940NYB	1"	Single Hose Connector w/ 3/8" Inlet Port	2.40
SS CP38939NYB	3/4"	Double Hose Connector w/ 3/8" Inlet Port	2.60
SS CP38941NYB	1"	Double Hose Connector w/ 3/8" Inlet Port	2.70
SS 21953V1	-	Viton® Diaphragm	1.80
SS CP21953-EPR	-	EPDM Diaphragm	1.00

* If using on dry boom, add connectors.

TeeJet

QJ Vari-Spacing Clamps

- Plated Steel & 304 Stainless Steel -



Plated Steel Vari-Spacing Clamps

QJ111-1/2	For 1/2" Pipe
QJ111-3/4	For 3/4" Pipe
QJ111-1	For 1" Pipe
QJ111-1/4	For 1-1/4" Pipe

Plated Steel Square Vari-Spacing Clamps

QJ111SQ-3/4	For 3/4" Square Tube
QJ111SQ-1	For 1" Square Tube
QJ111SQ-1-1/4	For 1-1/4" Square Tube
QJ111SQ-1-1/2	For 1-1/2" Square Tube



Stainless Steel Square Vari-Spacing Clamps

QJ111SQ-3/4SS	For 3/4" Square Tube
QJ111SQ-1SS	For 1" Square Tube
QJ111SQ-1-1/4SS	For 1-1/4" Square Tube
QJ111SQ-1-1/2SS	For 1-1/2" Square Tube

Part No.	Description	Discount	Net Ea.
SS QJ111-1/2	Vari-Clamp for 1/2" Pipe	10%	\$ 2.70
SS QJ111-3/4	Vari-Clamp for 3/4" Pipe	10%	2.90
SS QJ111-1	Vari-Clamp for 1" Pipe	10%	2.80
SS QJ111-1/4	Vari-Clamp for 1-1/4" Pipe	10%	2.70
SS QJ111SQ-3/4	Vari-Clamp for 3/4" Square Tube	10%	2.80
SS QJ111SQ-1	Vari-Clamp for 1" Square Tube	10%	3.10
SS QJ111SQ-1-1/4	Vari-Clamp for 1-1/4" Square Tube	10%	3.00
SS QJ111SQ-1-1/2	Vari-Clamp for 1-1/2" Square Tube	10%	2.90
SS QJ111SQ-3/4SS	SS Vari-Clamp for 3/4" Square Tube	10%	5.20
SS QJ111SQ-1SS	SS Vari-Clamp for 1" Square Tube	10%	5.20
SS QJ111SQ-1-1/4SS	SS Vari-Clamp for 1-1/4" Square Tube	10%	5.80
SS QJ111SQ-1-1/2SS	SS Vari-Clamp for 1-1/2" Square Tube	10%	6.20

TeeJet

End Caps for Diaphragm Check Valves & Diaphragms

Nylon / Polypropylene Material Less Diaphragm

Part No.	Opening Pressures	Color	Net Ea.
SS 21950-2NYB	2 PSI	Yellow	\$ 4.80
SS 21950-5NYB	5 PSI	Black	4.10
SS 21950-8NYB	8 PSI	Black	4.60
SS 21950-10NYB	10 PSI	Black	4.30
SS 21950-15NY	15 PSI	Red	4.60
SS 21950-20NYB	20 PSI	Black	4.60
SS CP21953-EPR	Raised EPR Diaphragm		1.00
SS 21953V1	Raised Viton® Diaphragm		1.80



Quick TeeJet NOZZLE BODIES & ADAPTERS



Diaphragm Check Valves - Top Style -

Low profile design allows maximum protection against damage. Drip-Free shutoff. 3.5 GPM @ 5 PSI. Standard Viton® diaphragm. Pressure to 125 PSI. Standard check pressure is 10 PSI. (2, 5, 8, 15 & 20 PSI also available).



22251
Diaphragm
Check

22252
Diaphragm
Check

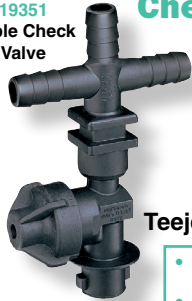
Part No.	Description	Net Ea.
SS 22251-3/8	Single Shank Check Valve, 3/8" Hose	\$ 8.70
SS 22251-1/2	Single Shank Check Valve, 1/2" Hose	9.00
SS 22251-3/4	Single Shank Check Valve, 3/4" Hose	8.90
SS 22252-3/8	Double Shank Check Valve, 3/8" Hose	8.40
SS 22252-1/2	Double Shank Check Valve, 1/2" Hose	8.50
SS 22252-3/4	Double Shank Check Valve, 3/4" Hose	9.10
SS 21953VI	Diaphragm (Viton®) for Check Valve	1.80
SS CP21953-EPR	Diaphragm (EPDM) for Check Valve	1.00

Note: SS 21950-2,5,8,15,20NYB End Caps Available.

TeeJet QuickJet

19351
Triple Check
Valve

Check Valves - Side Style



19350
Double
Check Valve



19349
Single
Check Valve



TeeJet QuickJet

- Standard Check Pressure is 10 PSI. (2, 5, 8, 15 & 20 PSI also available)
- Viton® Diaphragm
- 125 PSI Maximum Pressure

Part No.	Description	Net Ea.
SS 19349-3/8	Single Shank Check Valve, 3/8" Hose	\$ 10.20
SS 19349-1/2	Single Shank Check Valve, 1/2" Hose	10.10
SS 19349-3/4	Single Shank Check Valve, 3/4" Hose	10.20
SS 19350-3/8	Double Shank Check Valve, 3/8" Hose	10.10
SS 19350-1/2	Double Shank Check Valve, 1/2" Hose	10.10
SS 19350-3/4	Double Shank Check Valve, 3/4" Hose	10.50
SS 19351-3/8	Triple Shank Check Valve, 3/8" Hose	10.10
SS 19351-1/2	Triple Shank Check Valve, 1/2" Hose	10.10
SS 19351-3/4	Triple Shank Check Valve, 3/4" Hose	10.20
SS 21953VI	Diaphragm (Viton®) for Check Valve	1.80
SS CP21953-EPR	Diaphragm (EPDM) for Check Valve	1.00

Note: SS 21950-2,5,8,15,20NYB End Caps Available.

John Guest Push to Connect Caps & Bodies

Both the QJ cap and check body incorporate John Guest end connections for use with 1/4" or 3/8" tube. EPDM o-ring in the John Guest insert. Mounting slots will accept 10-24 screws or can be cable tied.



90° Cap



Swivel Cap



Straight Cap



PTC Body

Part No.	Description	Net Ea.
SS QJ98588-NYR	Straight QJ Cap for 1/4", O.D. Tubing	\$ 5.30
SS QJ114398-5/16	Straight QJ Cap for 5/16", O.D. Tubing	5.30
SS QJ98586-NYR	Straight QJ Cap for 3/8", O.D. Tubing	5.40
SS QJ98598-90-14	90° Cap for 1/4", O.D. Tubing	6.50
SS QJ98599-90-38	90° Cap for 3/8", O.D. Tubing	6.70
SS QJ98592-1/4-2	PTC Body for 1/4" O.D. Tube with 2# Check	11.30
SS QJ98592-1/4-5	PTC Body for 1/4" O.D. Tube with 5# Check	11.80
SS QJ98592-1/410	PTC Body for 1/4" O.D. Tube with 10# Check	10.80
SS QJ114400-5/16-5	PTC Body for 5/16" O.D. Tube with 5# Check	11.00
SS QJ114400-5/16-10	PTC Body for 5/16" O.D. Tube with 10# Check	11.10
SS QJ98590-3/8-2	PTC Body for 3/8" O.D. Tube with 2# Check	10.90
SS QJ98590-3/8-5	PTC Body for 3/8" O.D. Tube with 5# Check	11.40
SS QJ98590-3/810	PTC Body for 3/8" O.D. Tube with 10# Check	11.20
SS QJ114403-1/4	1/4" 90° Swivel Cap with Gasket	12.80
SS QJ114403-3/8	3/8" 90° Swivel Cap with Gasket	12.80
SS 18999EPR	EPDM Gasket as Replacement	1.40

Caps Include EPDM Gasket.

Diaphragm Check Valves - Side Style -

- Standard Check Pressure is 10 PSI. (2, 5, 8, 15 & 20 PSI also available)
- Viton® Diaphragm
- 300 PSI Maximum Pressure
- 2.25 GPM @ 5 PSI Drop



QJ8360NYB
Diaphragm Check Valve
11/16 Male x QuickJet

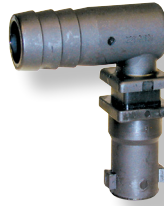


QJT8360NYB
Check Valve Adapter
11/16/16F x QuickJet

Part No.	Description	Net Ea.
SS QJ8360NYB	Diaphragm Check Valve with 1/4" MPT Inlet	\$ 6.30
SS QJT8360NYB	Diaphragm Check Valve with 11/16"-16 Inlet	6.20
SS 21953VI	Diaphragm (Viton®) for Check Valve	1.80
SS CP21953-EPR	Diaphragm (EPDM) for Check Valve	1.00
SS 19191EPR	Gasket for QJT as extra	2.00

Note: SS 21950-2,5,8,15,20NYB End Caps Available.

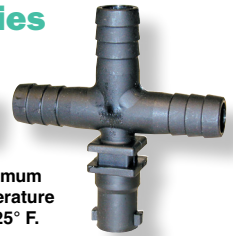
Hose Shank Bodies - 125 PSI -



18635-3/8
18638-1/2
18719-3/4
Single Hose Shank
Body-1/2 or 3/4" Barb



18636-3/8
18639-1/2
18719-3/4
Double Hose Shank
Body-1/2 or 3/4" Barbs



18637-3/8
18640-1/2
18721-3/4
Triple Hose Shank
Body-1/2 or 3/4" Barbs

Maximum
Temperature
is 125° F.

Part No.	Description	Net Ea.
SS 18635-3/8	Single Shank Body, 3/8", Hose	\$ 3.70
SS 18638-1/2	Single Shank Body, 1/2", Hose	3.80
SS 18719-3/4	Single Shank Body, 3/4", Hose	3.90
SS 18636-3/8	Double Shank Body, 3/8", Hose	3.60
SS 18639-1/2	Double Shank Body, 1/2", Hose	3.70
SS 18720-3/4	Double Shank Body, 3/4", Hose	3.70
SS 18637-3/8	Triple Shank Body, 3/8", Hose	3.70
SS 18640-1/2	Triple Shank Body, 1/2", Hose	3.70
SS 18721-3/4	Triple Shank Body, 3/4", Hose	3.80

Viton® is a registered trademark of DuPont Performance Elastomers

Adapters



22674-1/4NYB
45° Angle Adapter
1/4" MPT x QuickJet



QJ-1/4TNYB
Adapter
1/4" FPT x
QuickJet
QJT-NYB
11/16-16 Cap
Thread x QJ
Adapter



22669-1/4PPB
45° Angle Adapter
1/4" MPT x 11/16"-16
Thread for Std. Cap



QJ90-1NYR
Nozzle Adapter
QuickJet Cap x
90° QuickJet Adapter

Part No.	Description	Net Ea.
SS 22669-1/4PPB	45° Nozzle Body, 1/4" MPT x 11/16-16 thread	\$ 1.90
SS 22674-1/4NYB	45° Nozzle Body, 1/4" MPT x Quick TeeJet	2.65
SS QJ-1/4TNYB	Cap Adapter with 1/4" FPT Inlet	2.90
SS QJT-NYB	Cap Adapter with 11/16"-16 Cap Thread w/ Gasket	5.10
SS QJ-1/4TTNYB	Cap Adapter with 1/4" MPT Inlet	2.80
SS 19191EPR	Gasket for "QJT" Adaptors (Threaded end)	2.00
SS QJ90-1NYR	Quick Jet Cap x 90° Quick Jet Adapter	4.20

QuickJet Nozzle Cap Adapters



QJ4676-1/8NYR
QJ4676-1/4CEL
Adapters

1/8" or 1/4" FPT x QuickJet



QJ4676-45-1/4
Adapter

45° 1/4" FPT x QuickJet



QJ4676-90-1/4
Adapter

90° 1/4" FPT x QuickJet

Part No.	Description	Net Ea.
SS QJ4676-1/8NYR	1/8" FPT x QuickJet with EPDM Gasket	\$ 2.30
SS QJ4676-1/4CEL	1/4" FPT x QuickJet with EPDM Gasket	2.85
SS QJ4676-45-1/4	45° 1/4" FPT x QuickJet with EPDM Gasket	4.40
SS QJ4676-90-1/4	90° 1/4" FPT x QuickJet with EPDM Gasket	4.30

GREENLEAF & WILGER SPRAY & BOOMLESS NOZZLES



TDXL TurboDrop® Nozzles Air Injection Minimizes Drift

- TurboDrop® XL Nozzle (TDXL) • Pressure 20 - 120 PSI
- "D" Denotes Drift Control

The TurboDrop® Venturi utilizes a patented stabilization chamber and pulsation dampener which results in an even mixing of air with the spray liquid and a tighter more uniform droplet spectrum for a unique combination of drift control and coverage.

The TurboDrop® XL nozzle is unique among air injection nozzles in that it was designed for contact chemicals, not just glyphosate (a systemic herbicide).

* Always confirm the label of your product to see approved tips.

- Call or Visit www.dultmeier.com -

Part No.

GT TDXL11001 thru TDXL11010	Medium Pressure TurboDrop® Nozzle with Gasket
GT TDXL11001-D thru TDXL11010-D	Drift Control Turbo Drop® Nozzle with Gasket.....

Net Ea.

CALL

CALL



TurboDrop® Dual Fan Nozzles Air Injection Minimizes Drift



The D Version of the TurboDrop® Dual Fan Nozzles (TADF-D) were designed with dicamba, 2, 4-D and glyphosate in mind, where a coarser spray droplet is desirable. Alternating the TADF-D nozzles with the 10° fan forward and then the 10° fan backward on the boom will help counter potential loss of coverage by effectively spraying the target four times.

(TADF) may improve coverage with certain canopy types, or even help target smaller, just emerging weeds.

- Call or Visit www.dultmeier.com -

Part No.

GT TADF01 thru TADF10	Medium Pressure Dual Fan Nozzle with Gasket.....
GT TADF01-D thru TADF08-D	Medium Pressure Dual Fan "D" Nozzle with Gasket.....

Net Ea.

CALL

CALL



Turbo FloodJet® Spray Tips

TFVS: Color coded stainless tips. TFVP: All polymer, color coded.

- Excellent spray distribution for uniform coverage along the boom.
- Nozzle design incorporates a pre-orifice to produce larger droplets for less drift.
- Large, round orifice reduces clogging.
- Stainless steel with VisiFlo® color-coding band for easy size identification.
- Can be used with #CP25599 - NY Quick TeeJet® cap for automatic alignment.

Typical Applications:

Soil Incorporated Herbicides - Use at lower pressures (10-25 psi) to produce larger droplets for reduced drift. Mount on 30 - 40" spacings.

Pre-Emerge Herbicides - Use at 10 - 25 psi to reduce drift and provide uniform coverage. Also good for broadcast application of liquid fertilizers.

Post-Emerge Systemic Herbicides - Use at 20 - 30 psi to control drift. Provides uniform coverage along spray boom. 30" spacings are suggested for post-emerge applications.

Note: Cap & Gasket are Not Included

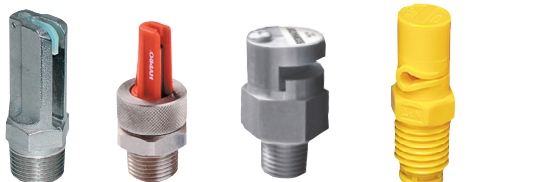
Part No.	TF Color Coded Tips	Net Ea.
SS TFVP2	thru TFVP10	\$ 2.90
SS TFVS2	thru TFVS10	12.30

10% Quantity Discount on 50+ Of One Size

TeeJet Packaged in 25's.



Boomless Nozzles We Also Stock All of These Boomless Nozzle Brands



HYPRO® BOOMINATOR® XPBoomJet®
- Call Us for Current Pricing -



Combo-Jet® 110 Degree Flat Fan Nozzles

The Combo-Jet® Tip-Cap with Its Snap-In Strainer is Easier to Clean and Stays Clean Longer



ER Series Extended Range SR Series Small Reduction MR Series Mid Range Reduction DR Series Drift Reduction UR Series Ultra Reduction

Part No.

WL ER110-01 thru ER110-25	Net Ea. \$ 8.60
WL SR110-015 thru SR110-25	12.40
WL MR110-01 thru MR110-20	12.20
WL DR110-015 thru DR110-15	12.20
WL UR110-025 thru UR110-10	16.40

Save 10% On 50+ of One Size

COMBO-JET® SPRAY TIP SERIES: COMPARISONS AT A GLANCE



DX Series - Narrow Angle Drift Reduction

-PWM Approved-



Wilger's newest Combo-Jet® nozzle, the DX Series is a narrow-angle spray nozzle designed for exceptional drift reduction within Net Ea.ty and spot spraying applications. DX spray tips are an eNet Ea.ly effective option for spray-on-green and green-on-green optical spot spraying systems. Narrow angle nozzles allow for concentrated, more-direct applications of systemic herbicides, fungicides, and foliar fertilizers to the target plant - therefore reducing treatment costs and waste while also decreasing drift. Available in 20-, 40-, and 60-degree angle spray patterns.

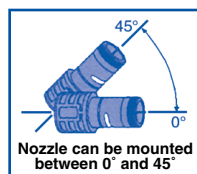
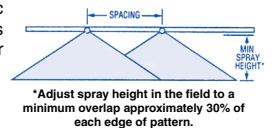
Part No.

WL DX20-015 thru DX20-125	Net Ea. \$ 12.40
WL DX40-015 thru DX40-125	12.30
WL DX60-015 thru DX60-125	12.30
WL 40250 50 Mesh Strainer	2.05
WL 40251 100 Mesh Strainer	2.05



Quick Turbo FloodJet Nozzles

"Turbo FloodJet Nozzles" standard features include: • Unique orifice design that produces larger droplets for reduced drift and clogging • Precise spray distribution for dramatic improvement in pattern uniformity • Stainless steel construction with color-coding for identification • Grooved side molding for automatic alignment with any quick-connect coupler • Requires only 30% overlap, enabling the use of fewer, larger nozzles.



Suggested Minimum Spray Height*	
Nozzle Spacing	Spray Height
40"	18 - 20"
60"	25 - 28"
120"	50 - 55"

*When nozzle is mounted parallel to the ground.

5% Quantity Discount on 25+ One Size

Part No.

SS QCTFVS15 thru QCTFVS80	QUICK "TURBO" FLOODJETS Turbo FloodJet Nozzles	Net Ea. \$ 31.75
SS QCTFVS100 thru QCTFVS120	Turbo FloodJet Nozzles	43.50
SS QCKSS150 thru QCKSS210	FloodJet Nozzles	74.50
TK P075B	3/4" Poly Coupler with Guide	10.00

* Quantity discounts do not apply

HYPRO NOZZLES & BODIES

HYPRO® Ultra Lo-Drift Spray Tips with Dual Air Eduction Technology for Weed Control



Features: ULD Creates Air-Filled Droplets which Significantly Reduce Spray Drift • Wide Spray Angle (120°) • Uniformity at All Pressures (15-115 PSI) • Precision Molded from Durable Polyacetal • Available in Sizes 015 to 08 • Convenient FastCap™ Available • FastCap® complete includes tip, cap, gasket and 50M strainer for sizes 015-06. Includes EPDM gasket.

10% Discount on 50+ of One Size

Part No.	Color	GPM	20" Spacing	20" Spacing	Net Ea.
		@ 40 PSI	GPA @ 12MPH	GPA @ 16 MPH	
TW FCULD120015	Green	.15	3.7	2.8	\$ 12.70
TW FCULD12002	Yellow	.20	5.0	3.7	12.70
TW FCULD120025	Purple	.25	6.2	4.6	12.70
TW FCULD12003	Blue	.30	7.4	5.6	12.70
TW FCULD12004	Red	.40	9.9	7.4	12.70
TW FCULD12005	Brown	.50	12.4	9.3	12.70
TW FCULD12006	Gray	.60	14.9	11.1	12.70
TW FCULD12008	White	.80	19.8	14.9	12.70

PulseGuard™ Nozzles HYPRO®



Hypro PulseGuard Nozzles are PWM-compatible nozzles designed for applying broad-spectrum herbicides and crop protection products. Featuring a dual-pre orifice design and wide 120° spray angle, PulseGuard nozzles offer a large droplet spectrum – from Coarse to Extremely Coarse – providing an effective balance between drift reduction and spray coverage. Designed with a quick-change Snaplock cap with gasket and integrated strainer and DustGuard protection to make maintenance and nozzle replacement quick and easy. Rated pressure range of 20-80 PSI. All sizes PWM approved.

Hypro PulseGuard spray nozzles are equivalent to John Deere Low Drift Max (LDM) nozzles.

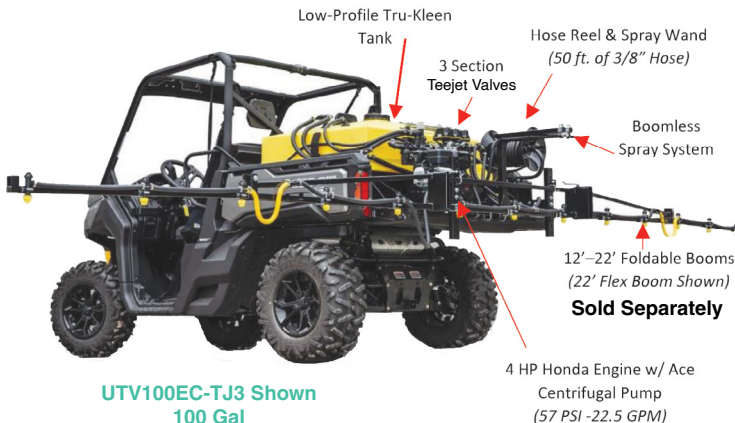
Part No.	Net Ea.
TW PLSG120-03 thru PLSG120-10	\$ 10.05

Nozzles Packaged in 10's – 10% Discount on 50 Not Assorted

UTV Skid Sprayers

Spray Like A Pro & Leave No Hillside, Pathway or Fence Line Untreated!

These **UTV Sprayers** offer superior performance with off-road convenience for all your farm & ranch small area spraying. All UTV skid sprayers feature 60- or 100-gallon low-profile *Tru-Kleen™* tanks, *Honda GX* engines, 22 GPM *ACE* centrifugal pumps, remote drains, and high-quality *Teejet & Banjo* plumbing components. Standard with spray wand and hose reel with 50 ft. of 3/8" hose for spot spraying ease. Manual control units include an adjustable swing-away control arm with master shutoff valve and in-cab pressure gauge. Electric control models include 744A *TeeJet* controllers and are available with optional multi-section control. Multiple folding boom lengths and boomless spray system accessory options available for all UTV sprayer models. **Booms and accessories sold separately – call for pricing.**



**UTV100EC-TJ3 Shown
100 Gal**

HF High Flow 140° Wide Angle Drift Reducing Tips for Fertilizer

Features: High Volume Coverage or High Speed Applications • 140° Pattern Ensures Unmatched Uniformity Across the Spray Boom & Throughout the Entire Pressure Range (20-80 PSI) • Wide Spray Angle (140°) Allows for Lower Spray Height • Droplets (XC) are Under 100 Microns are Controlled • Straight-Through Design Reduces Clogging & Easily Fits Directly on Standard Nozzle Bodies • FastCap™ Design Adds Convenience.



Fast Cap Combo with Tip, Cap & O-Ring

10% Discount on 50+ of One Size

Part No.	Color	GPM	20" Spacing	40" Spacing	Net Ea.
		@ 40 PSI	GPA @ 12MPH	GPA @ 12 MPH	
TW HF140-08	White	.80	19.8	10.0	\$ 15.20
TW HF140-10	Blue	1.0	25.0	12.5	15.20
TW HF140-15	Green	1.5	37.0	18.5	15.20
TW HF140-20	Black	2.0	50.0	25.0	15.20
TW HF140-30	Tan	3.0	74.0	37.0	15.20
TW HF140-40	White	4.0	99.0	50.0	15.20
TW HF140-50	Purple	5.0	124	62.0	15.20
TW HF140-60	Yellow	6.0	149	75.0	15.10
*TW 65-VBS205 Viton® O-Ring					1.10

* Quantity discounts do not apply

HYPRO® Hi-Flow Turret Nozzle Bodies for Wet or Dry Booms

Standard Equipment on Many Commercial Sprayers

Features:

- Three turret styles for an easy change of spray tips, single, 3-way & 5-way.
- Available in wet or 3/4" & 1" dry boom versions.
- Positive shutoff between each spray position.
- 2.6 GPM with a 5 PSI pressure drop through the nozzle.
- Can be used with all Quick Attach spray tips. **Caps, Gaskets & tips not included.**
- ProFlo nozzle bodies come standard with an 8 PSI EPDM check valve 4 PSI, 12 PSI & 20 PSI check valves are available.



Part No.	Nozzle Bodies for WET Booms	Net Ea.
TW 9950-0014	3 Nozzle Turret for 3/4" Wet Boom / EPDM.	\$ 20.40
TW 9950-0015	3 Nozzle Turret for 1" Wet Boom / EPDM....	18.80
TW 9950-0016	5 Nozzle Turret for 3/4" Wet Boom / EPDM.	20.30
TW 9950-0018	5 Nozzle Turret for 1" Wet Boom / Viton®....	18.80

10% Quantity Discount on 50+ One Size

"Jumbo" High Volume 5-Way Nozzle Turrets

For John Deere Sprayers with 1" Booms with 11/16" Diameter Boom Holes

These **High Volume 5-Way Nozzle Turrets** are designed as direct replacements for *John Deere* Sprayers with 1" Booms with 11/16" diameter boom holes. Easy Fit Connection for 1" pipe; includes stainless screw and nut. Standard with Viton® diaphragms. High volume - 6 GPM at 5 PSI pressure drop. Check valve closes at 12 PSI. 5 Nozzle lugs fit QuickJet 90° turn caps. Rated to 145 PSI.



Part No.	Description	Net Ea.
AG 51	Jumbo 5-Way Nozzle Turret for 1" Boom	\$ 59.00
AG 51-V	Replacement Viton® Diaphragm for Above...	5.90
AG 51-CV	Replacement 12 PSI Check Valve for Above	4.05

10% Quantity Discount on 50+ One Size

SPRAYER, TRANSFER & PLANTER PUMPS



HYPRO®
Cast Iron
Pumps



9306S

9303C

Hydraulic Drive Spray Pumps – Viton® or Silicon Carbide Seals

Part No.	Material	Size/Style	Net Ea.
HY 9303C-HM1	Cast Iron	1-1/2" x 1-1/4" FPT	\$1171.00
HY 9303C-HM4	Cast Iron	1-1/2" x 1-1/4" FPT	1129.00
HY 9303C-HM5	Cast Iron	1-1/2" x 1-1/4" NPT	1164.00
HY 9306CHM1C	Cast Iron	2" x 1-1/2" FPT	1370.00
HY 9306CHM5C	Cast Iron	2" x 1-1/2" FPT	1297.00
* HY 9306CHM3CB	Cast Iron	2" x 1-1/2" FPT	1474.00
* HY 9306CHM5CB	Cast Iron	2" x 1-1/2" FPT	1425.00
* HY 9306SHM1C	Stainless	2" x 1-1/2" FPT	2448.00
* HY 9306SHM5C	Stainless	2" x 1-1/2" FPT	2328.00

* Severe Duty Sil-Carbide Seal - HY 9307 Series 3X2 Available -

ACE Hydraulic Drive Pumps



Cast Iron

— Other Models Available —



Part No.	Net Ea.
AC FMC-HYD-204	\$ 994.00
AC FMC150HYD206	1019.00
AC FMC200HYD304	1208.00
AC FMC150FHYD206	1061.00

Hydraulic Driven Cast Iron Pumps

– Pro 5 Series –

Feature Silicon Carbide or Oasis Wet Seals



Part No.	Description	Net Ea.
AC FMCSC125-206	Sil-Carb Seal Pump, 1-1/4" x 1" FPT, 110 GPM.	\$ 1074.00
AC FMCSC125-206PWW	Same as above with PWW	1871.00
AC FMCWS125-204	Wet Seal Pump, 1-1/4" x 1" FPT, 92 GPM	1508.00
AC FMCWS125-206	Wet Seal Pump, 1-1/4" x 1" FPT, 110 GPM	1508.00
AC FMCWS125-206PWW	Same as above with PWW	2304.00
AC FMCWS155F-206	Wet Seal Pump, 220 x 200 Flange, 145 GPM	1599.00
AC FMCWS155F-206PWW	Same as above with PWW	2370.00



Hydraulic Driven Cast Iron Pumps



Call for Other Options

Part No.	Description	Net Ea.
AC 150F-PWW	Cast Iron Pump with 11 GPM Hydraulic Motor with PWW Valve. Inlet is Flanged 220FP & 1-1/2" FPT, Outlet is Flanged 200 Std. Port & 1-1/4" FPT. 155 GPM - 130 PSI. Severe Duty Silicon Carbide Seal..	\$ 2073.00

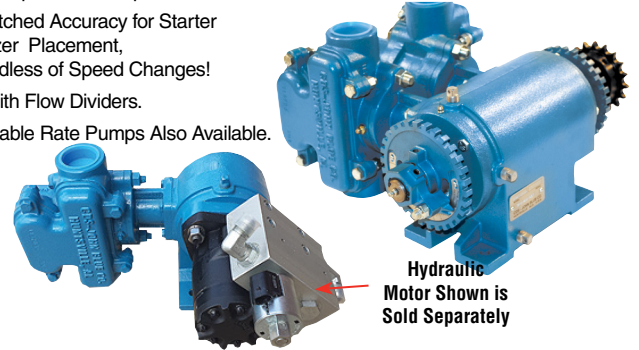


John Blue NGP

Ground Drive & Hydraulic Piston Pumps

Features:

- Rate Proportional to Speed.
- Unmatched Accuracy for Starter Fertilizer Placement, Regardless of Speed Changes!
- Use with Flow Dividers.
- Adjustable Rate Pumps Also Available.



Hydraulic Motor Shown is Sold Separately

Part No.	Max. GPM @ 450 RPM	Max. PSI	Port Size	Net Ea.
BU NGP4055F	10.2	120	1" FPT / 2" SP Flange	\$ 1795.00
BU NGP4055HYF*	10.2	120	1" FPT / 2" SP Flanged	1159.00
BU NGP6055	21.0	120	1-1/2" FPT	1519.00
BU NGP6055HYF*	21.0	120	1-1/2" FPT/(2) 220 Flg. Flanged	1059.00
BU NGP7055	34.2	120	1-1/2" FPT	1859.00
BU NGP7055HY*	34.2	120	1-1/2" FPT	1059.00
BU NGP7055HYF*	34.2	120	1" FPT / 2" SP Flange	1179.00
BU NGP8055	42.0	120	1" FPT	2698.00
BU NGP9055	68.4	120	1-1/2" FPT	2985.00
BU 116205-91**	Hydraulic Motor & PWM Valve for "HY" Pumps			1098.00

* Less hydraulic motor ** This version bypasses excess oil

2" & 3" Self-Priming Poly Transfer Pumps

HYPRO, PACER & BANJO ENGINE DRIVEN PUMPS:

Portable • LightWeight • Self-Priming • Corrosion-Resistant



HYPRO
HY 1542P-5SP



BANJO
TK 200PH6

PACER



HYPRO® Motor Driven Units Also Available

Part No.	PUMP STYLE	Ports	Max. GPM	Net Ea.
HY 1542P-65SP	6.5 HP <i>Hypro</i> PowerPro	2" FPT	200	\$ 441.00
TK 200PH6	6.5 HP <i>Banjo/Honda</i>	2" FPT	215	890.00
TK M220PH6	2" 6.5 HP <i>Banjo/Honda</i>	2" Flg		891.00
TK 300PH-6	6.5 HP <i>Banjo/Honda</i>	3" FPT	290	982.00
* HY 1543P-130ESP	13 HP <i>Hypro</i> PowerPro	3" FPT	440	1454.00
TK M300PH13W**	13 HP <i>Banjo/Honda</i>	3" FPT	350	2207.00

* Electric Start. ** 12V Start, Double Wet Seal.

Double Wet Seal Cast Iron Pump Pak

3" Features:

- 375 GPM Maximum Flow
- 13 HP *Honda* GX200
- Flanged



313GHE-HF
Cast Iron

Part No.	Description	Net Ea.
DU BU313GHE-HF	3" Self Priming with 13 HP <i>Honda</i> , Elec. Start Eng.....	\$ 2792.00
DU BU313GHE-HF-F	3" Self Priming with 13 HP <i>Honda</i> , Elec. Start Eng.....	2825.00

12V SPRAYER VALVES & FLOW METERS

344BE - 12-Volt DC Operated 2-Way & 3-Way Electric Ball Valves

- 1" FPT Ports, 3/4" Flow.
- Pressures to 300 psi.
- Wetted Parts: Nylon, Teflon, Polypropylene, Viton® & S.S.
- 12-Volt DC operation.
- 5 PSI pressure loss for 32 GPM flow.
- 0.7 Second close.



TeeJet



344BEC-24C
2-Way Valve

**12-Volt DC
REMOTE CONTROL
Valves**

Part No.	Description	Net Ea.
SS 344BE-24C	2-Way Valve with Double Pole SW.....	\$ 255.00
SS 344BEC-24C	2-Way Valve with Single Pole SW.....	254.00
SS 344BEC-34C	3-Way Valve with Single Pole SW.....	304.00
SS 50515-22CP05	Motor Sub Assembly, 22 RPM.....	212.00
SS 50515-25CP05 †	Motor Sub Assembly, 25 RPM.....	212.00

* for 344B, 440B, 450B, 460B † for 346B, 356, 490

346 Series Remote Control Electric Ball Valves 3-Way • 12 Volt DC Operated

- Maximum pressure 150 PSI
- 5 PSI pressure drop for 64 GPM flow on 3-way.
- 0.6 second response time from fully closed.
- Internal resettable fuse.
- Wetted parts made of corrosion-resistant material: glass-reinforced polypropylene, Teflon®, stainless steel, and Viton®
- Sealed motor assembly.
- Flanged connections available.



TeeJet

Part No.	Size	Description	Net Ea.
SS 346BEC-35-C	1-1/4"	12 V, 3-Way Ball Valve	\$ 474.00
SS 346BEC36C	1-1/2"	12 V, 3-Way Ball Valve	474.00
SS 50515-25CP05		Motor Sub Assembly.....	212.00

440 Manifold Systems 12 Volt • 1" FPT Connection

The TeeJet® 12VDC 440B Series Directo Valve Manifold provides a convenient, compact solution for the installation of multiple 344B electric ball valves.



TeeJet

Standard with 0.5 meter cables (other lengths & DIN connectors available).

FEATURES:

- 0.6 Seconds shutoff fully open to close.
- Up to five electric ball valves.
- Built-in brackets.
- 300 PSI
- Flow rate 26 GPM with 5 PSI pressure drop.
- Internal resettable fuse.
- Stainless steel stem with optional polypropylene or stainless steel ball.
- 1" FPT Connections.

Part No.	Solenoid Manifolds	Net Ea.
SS 443BEC	Three Valve Manifold.....	\$ 884.00
SS 445BEC	Five Valve Manifold.....	1433.00
SS 440BEC4C	Replacement Valve & Motor....	272.00
SS 50515-22CP05	Motor Sub Assembly.....	212.00



Dura Electric Valves 12V ON/OFF 1", 2" & 3"

- Waterproof actuator housing
- Polypropylene body; 150 PSI rating
- SS ball; PTFE seat
- On-Off (0.8 seconds)
- 3 wire harness with 4 pin deustch connector
- Flanged (Banjo style)
- Physical Indicator: LED light, provides immediate visual On/Off status
- Modular Connector System: Allows for easier actuator & wire harness changeout
- Compact Size
- 2 Year Warranty



Part No.	Description	Net Ea.
DP EV100	1" 12V Dura Valve.....	\$ 331.00
DP EV100-3	3" Valve Assembly (1") 12V Dura with 2" Manifold.....	1278.00
DP EV220	2" 12V Dura Valve.....	544.00
DP EV300	3" 12V Dura Valve.....	816.00
DP EV1A	1" Actuator Only, 12V, On-Off.....	221.00

Raven Flow Meters

For Use with Raven Rate Controllers & Other Monitors. 3-Pin Conxall Connectors. 4.5-16VDC

RAVEN
INDUSTRIES



MEVX Flanged 12 Volt Off/On & Regulating Ball Valves

MEVX Flanged 12 Volt Off/On and Regulating Ball Valves. The 101, 201 and 221 Off/On Valves are bolted drop in version and can be used as replacements where size is critical in existing applications. The regulating valves are the new welded version and will not be an exact replacement. Flanged ends.

BANJO
Liquid Handling Products

Part No.	Description	Flange		Time	Ball	Wt.	Net Ea.
		Size	Sec.				
TK MEVX100	Welded Off/On Valve	1"	3/4	300	1"	5 lbs.	\$ 418.00
TK MEVX101	* Off/On Valve	1"	3/4	300	1"	5 lbs.	405.00
TK MEVX200	Welded SP Off/On Valve	2"	1-1/2	300	1-1/2"	5 lbs.	590.00
TK MEVX201	* SP Off/On Valve	2"	1-1/2	300	1-1/2"	5 lbs.	586.00
TK MEVX220	Welded FP Off/On Valve	2"	FP	1-1/2	250	2"	639.00
TK MEVX221	* FP Off/On Valve	2"	FP	1-1/2	250	2"	625.00
TK MEVX300	Welded Off/On Valve	3"	4	150	3"	9 lbs.	1120.00
TK MEVXR100	Regulating Valve	1"	4	300	3"	5 lbs.	441.00
TK MEVXR200	SP Reg. Valve	2"	4	300	1-1/2"	5 lbs.	637.00
TK MEVXR220	FP Reg. Valve	2"	FP	4	250	2"	651.00

* Bolted Drop In Version.



Part No.	GPM	Size	Banjo Flanged	Material	Net Ea.
RV RFM15P	3-15	2" SP Flange	M200	Poly	\$ 537.00
RV RFM60P	1-55	2" SP Flange	M200	Poly	714.00
RV RFM60S	1-60	1-1/2" FPT	No	Stainless	1143.00
RV RFM60SG*	1-60	1-1/2" Victaulic Clamp	No	Stainless	1221.00
RV RFM100	5-100	2" FP Flange	M220	Poly	1063.00
RV RFM200POLY	15-200	3" Flange	M300	Poly	1695.00

* Doesn't include clamps.

BANJO POLY VALVES



Flange x Flange Ball Valves



Part No.	Size	Net Ea.
TK MV100CF	1" Full Port	\$ 35.25
TK MV200CF	2" Std. Port	51.50
TK MV220CF	2" Full Port	69.50
TK MV300CF	3" Full Port	164.00
TK MV300	3" Std. Port	114.00
TK MVS220CF	2" Full Port "Stubby"	64.00
TK MVS300CF	3" Std. Port "Stubby"	127.00
TK MVS300CFPP	3" Full Port "Stubby"	160.00

Flange x Male Adapter Valves "Stubby"



Part No.	Description	Net Ea.
TK VSF200CF	2" Flange x 2" Male Adapter	\$ 53.00
TK MVSF220FP	2" FP Flange x 2" Male Adapter ...	64.00
TK MVSF300	3" Flange x 3" Male Adapter	127.00
TK MVSF300FP	3" FP Flange x 3" Male Adapter....	162.00



Flange x MPT Ball Valves "Stubby"



Part No.	Description	Net Ea.
TK VSMT200CF	2" Flange x 2" MPT Male Thread Std. Ball Valve	\$ 62.50
TK MVSMT300	3" Flange x 3" MPT Male Thread Std. Ball Valve	172.00

3-Way Bottom Load Manifold Poly Valves

Directional Flow, Right or Left • 100 PSI
• Valve Can Be Turned Off to Stop Flow • All Flanged Ports



Part No.	Description	Thru Ball	Handle Type	Net Ea.
TK MV100BL	1" Flanges	1"	T	\$ 60.50
TK MV200BL	2" Std. Port Flanges ..	1-1/2"	T	69.50
TK MV220BL	2" Full Port Flanges ..	2"	Straight	98.50
TK MV300BL	3" Full Port Flanges ..	3"	Straight	261.00



3-Way Side Load Manifold Poly Valves

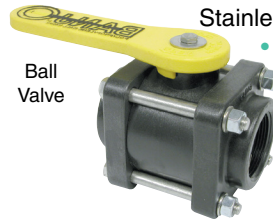


Directional Flow, Right or Left • 100 PSI • All Flanged Ports
Valve Cannot Be Turned Off to Stop Flow

Part No.	Description	Thru Ball	Handle Type	Net Ea.
TK MV100SL	1" Flanges	1"	T	\$ 61.00
TK MV200SL	2" Std. Port Flanges ..	1-1/2"	Straight	77.00
TK MV220SL	2" Full Port Flanges ..	2"	Straight	99.00

Polypropylene FPT BALL VALVES

Stainless Bolts • Teflon Seats
• Viton® Stem Seals



Union Valve (EPDM Seal)



Nozzle Valve

Part No.	Size	Ball	Pkg. Qty.	Net Ea.
TK V150	1-1/2"	Valve	24	\$ 49.00
TK V200	2"	Valve	24	47.50
TK V200FP	2"	Valve	8	66.00
TK V204FP	2"	Valve	8	63.50
TK V300	3"	Valve	8	107.00
TK V300FP	3"	Valve	6	158.00
TK VA150	1-1/2"	Nozzle	12	58.50
TK VA200	2"	Nozzle	12	60.00
TK VA200FP	2"	Nozzle	6	86.50
TK UV050FP	1/2"	Union	24	16.80
TK UV075FP	3/4"	Union	24	17.20
TK UV100FP	1"	Union	24	20.80
TK UV125FP	1-1/4"	Union	24	42.75
TK UV150FP	1-1/2"	Union	24	42.25
TK UV200FP	2"	Union	18	44.75

Easy-Fill™ Valves



These Polypropylene Valves eliminates the need for multiple fittings. The stubby valve design also reduces length. Extended coupler prevents handle interference. Max 150 PSI operating pressure.



Part No.	Description	Net Ea.
TK VSBHB205FP	2" FP EASY-FILL Valve with Carry Handle	\$ 90.00
TK VSBHB304FP	3" FP EASY-FILL Valve No Carry Handle..	198.00
TK H25053	2"/3" Easy Carry Handle *	21.66

* Easy Carry Handle works with many other Banjo Valves.



1" Chemical Nozzle Valves

UVA100 Hose end Nozzle Valve for use with ag chemicals and many other chemicals. Incorporates the "Single Union Poly Ball Valve". Polypropylene material is resistant to most chemicals and fertilizers. 45 degree spout assembly will fit & stay put in any tank opening. Has Full Flow Ball with 1" FPT Inlet.



UVA100



F0236 Anti-Drip Nozzle Spout for Banjo™ Nozzles

Part No.	Net Ea.
TK UVA100	1" Poly Ball Valve Nozzle \$ 33.50
FR F0236	Anti-Drip Nozzle Spout.. 28.50

Valve Mounting Brackets



Straight Mtg. Bracket
V25270 fits V150 & V200
V10270 Fits V100FP & V125

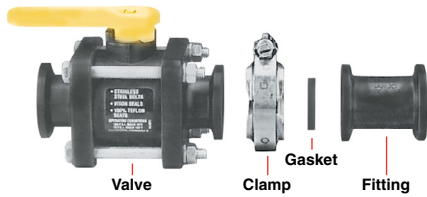


90° Mtg. Bracket
V25271 fits V150, V200
V10271 fits V100FP & V125

Part No.	BANJO VALVE REPAIR KITS	Net Ea.
TK V25271	* 90° Mounting Bracket	\$ 20.42
TK V25270	* Straight Mounting Bracket ..	17.42
TK V10271	** 90° Mounting Bracket	11.36
TK V10270	** Straight Mounting Bracket ..	36.43

Valve Repair Kits Include: 1-Ball, 2-Ball Seats, 1-Upper Stem Bushing & 1-Viton® "O"-Ring. * Fits 1-1/2" - 3" FP Valves. ** Fits 1" & 1-1/4" Valves.

POLYPROPYLENE FLANGED MANIFOLD FITTINGS



Features: Positive Seals • Quick & Easy Assembly • Easy On/Off Hose Connections • 360° Orientation • No Threads, No Sealant, No Pipe Tape • Heavy Duty Glass Filled Polypropylene **Sizes:** 1" (Full Flow) • 2" Std. Port (1-1/2" I.D.) • 2" Full Port (2" I.D.) • 3" (2-1/2" Flow) • 1" - 2": 150 PSI W.P.; 3": 100 PSI W.P. @ 70° F.

Note: 2" Full Port valves & fittings can only be used with other 2" Full Port Fittings. Clamps and gaskets must be ordered separately.

Viton® is a registered trademark of DuPont Performance Elastomers

10% Discount on Pkg. of 10

Flanged Crosses

Part No.	Size	Net Ea.
TK M100CR	1"	\$ 19.74
TK M200CR	2"	32.20
TK M220CR	2" Full Port	35.40
TK M300CR	3" Full Port	71.00
TK M100CRC1	1" with 1/4" Gauge Port	22.40



Flange x Flange Couplings



Part No.	Size	Net Ea.
TK M100CPG	1"	\$ 5.91
TK M200CPG	2"	12.50
TK M220CPG	2" Full Port	14.10
TK M220CPG3G	2" Full Port 1/2" Gauge Port	36.37
TK M220CPG6	6" Long, 2" Full Port	19.80
TK M300CPG	3", 4" Long	16.40
TK M300CPG7	3", 7" Long	19.60
TK M300CPG12	3", 12" Long	56.00
TK M300CPG27	3", 27" Long	107.00
TK M300CPG38	3", 38" Long	114.00

Flange x Male Thread Adapters (MPT)



Part No.	Description	Net Ea.
TK M700H	1" Flange x 3/4" MPT	\$ 2.77
TK M700A	1" Flange x 1" MPT	2.77
TK M700G	1" Flange x 1-1/4" MPT	2.77
TK M700B	2" Flange x 1-1/4" MPT	4.60
TK M700C	2" Flange x 1-1/2" MPT	4.60
TK M700D	2" Flange x 2" MPT	4.60
TK M700E	2" Full Port Flange x 2" MPT	4.60
TK M700F	3" Flange x 3" MPT	12.80

Reducer Couplings Flange x Flange



Part No.	Description	Net Ea.
TK M200100CPG	2" Std Port x 1" Reducer Flange	\$ 14.30
TK M220100CPG	2" Full Port Flange x 1" Reducer Flange	15.60
TK M220200CPG	2" Full Port x 2" Std. Port Reducer Flange	15.60
TK M300200CPG	3" x 2" Std Port Reducer Flange	36.75
TK M300220CPG	3" x 2" Full Port Reducer Flange	33.00

Flange x Female Fittings (FPT)



Part No.	Description	Net Ea.
TK M100050FPT	1" Flange x 1/2" FPT	\$ 2.47
TK M100075FPT	1" Flange x 3/4" FPT	2.47
TK M100FPT	1" Flange x 1" FPT	4.60
TK M200FPT	2" Flange x 2" FPT	12.00
TK M220FPT	2" FP Flange x 2" FPT	21.60
TK M300FPT	3" Flange x 3" FPT	34.75

Flange X Hose Barb



Part No.	Size	Net Ea.
TK M701A	1" x 3/4" HB	\$ 2.41
TK M701B	1" x 1" HB	2.41
TK M701C	1" x 1-1/4" HB	2.41
TK M701D	2" x 1" HB	5.26
TK M701E	2" x 1-1/4" HB	5.43
TK M701F	2" x 1-1/2" HB	4.80
TK M701G	2" x 2" HB	5.20
TK M701HA	2" Full Port Flange x 1" HB	6.44
TK M701H	2" Full Port x 1-1/2" HB	5.26
TK M701I	2" Full Port x 2" HB	4.80
TK M701J	3" x 3" HB	14.55
TK M701K	3" x 2" HB	16.11
TK M300400BRB	3" Flange x 4" HB	4.80

Flange x Male Adapters (CAM)

Part No.	Description	Net Ea.
TK M100A	1" Male Adapter x 1" Flange	\$ 6.38
TK M200A	2" Male Adapter x 2" Std. Port Flange	8.53
TK M220A	2" Male Adapter x 2" Full Port Flange	9.30
TK M300A	3" Male Adapter x 3" Flange	18.17
TK M300400A	4" Male Adapter x 3" Flange	18.17



45° Flanged Manifold Fittings



Part No.	Description	Net Ea.
TK M100CPG45	1" x 1" Flange 45°	\$ 10.88
TK M200CPG45	2" x 2" Std. Port Flange 45°	12.82
TK M220CPG45	2" x 2" Full Port Flange 45°	15.40
TK M300CPG45	3" x 3" Flange 45°	63.50

Flange Tees

Part No.	Size	Net Ea.
TK M100TEE	1"	\$ 6.70
TK M200100TEE	2" x 2" x 1"	13.59
TK M220100TEE	2" FP x 2" FP x 1"	14.34
TK M220200TEE	2" FP x 2" FP x 2"	22.17
TK M220100TEE	2" FP x 2" FP x 1"	14.34
TK M200TEE	2"	12.80
TK M220TEE	2" Full Port	12.80
TK M300TEE	3"	57.00



316 Stainless Flange x MPT Socket Weld Fittings



Part No.	Description	Net Ea.
TK M100MPTSS	1" Flange x 1" MPT	\$ 29.87
TK M200125MPTSS	2" Std. Flange x 1-1/4" MPT	50.00
TK M200150MPTSS	2" Std. Flange x 1-1/2" MPT	46.50
TK M200MPTSS	2" Std. Flange x 2" MPT	58.50
TK M220150MPTSS	2" Full Port Flange x 1-1/2" MPT	65.50
TK M220MPTSS	2" Full Port Flange x 2" MPT	61.00
TK M300220MPTSS	3" Full Flange x 2" FP MPT	168.00
TK M300MPTSS	3" Full Flange x 3" MPT	99.50
TK M100SWFSS	1" Flange x Socket Weld Fitting	28.08
TK M200SWFSS	2" Flange x Socket Weld Fitting	78.00
TK M220SWFSS	2" Full Port Flange x Socket Weld Fitting	72.00
TK M300SWFSS	3" Flange x Socket Weld Fitting	123.00

POLYPROP FLANGED FITTINGS & ACCESSORIES

Flange x Hose Barb 90° Elbows



10% Discount on Pkg. of 10

Part No.	Size	Net Ea.
TK M702A	1" Flange x 3/4" HB	\$ 2.93
TK M702B	1" Flange x 1" HB	2.93
TK M702C	1" Flange x 1-1/4" HB	2.93
TK M702L	1" Flange x 1-1/2" HB	17.53
TK M702D	2" Flange x 1" HB	9.72
TK M702E	2" Flange x 1-1/4" HB	9.72
TK M702F	2" Flange x 1-1/2" HB	8.80
TK M702G	2" Flange x 2" HB	9.70
TK M702H	2" Full Port Flange x 1-1/2" HB	9.72
TK M702I	2" Full Port Flange x 2" HB	9.70
TK M702J	3" Flange x 2" HB	16.01
TK M702K	3" Flange x 3" HB	38.75
TK M602D	1" Std. Port Flange x 1" HB 45°	14.36
TK M602E	2" Std. Port Flange x 1-1/2" HB 45°	17.26
TK M602G	2" Std. Port Flange x 2" HB 45°	20.26
TK M602I	2" Full Port Flange x 2" HB 45°	19.60
TK M602K	3" Flange x 3" HB 45° Elbow	64.00

Flange x Female QDC



Part No.	Size	Net Ea.
TK M220D	2" FP Flange x 2" Female Coupler	\$ 21.60
TK M303D	3" Flange x 3" Female Coupler	41.00

10% Discount on Pkg. of 10

Polypropylene

Bolted Manifold Tank Flanges EPDM Gaskets

10% Discount on Pkg. of 10



Part No.	Outlet x Inlet	Net Ea.
TK MBF100	1" Flange x 1" Female Thread	\$ 66.00
TK MBF200	2" Std. Port Flange x 2" Female Thread	67.00
TK MBF220	2" Full Port Flange x 2" Female Thread	77.00
TK MBF300	3" Flange x 3" Female Thread	104.00

Note: Viton® Gaskets also available.

Flange Plugs

Part No.	Size	Net Ea.
TK M100PLG	1"	\$ 2.77
TK M200PLG	2"	4.60
TK M220PLG	2" Full Port	5.87
TK M300PLG	3"	15.68

10% Discount on Pkg. of 10



Flange Plugs with FPT Port

Gauge Port

Part No.	Description	FPT	Net Ea.
TK M100PLG025	1" Flange Plug	1/4"	\$ 10.84
TK M100PLG050	1" Flange Plug	1/2"	11.95
TK M200PLG025	2" Std. Port Plug	1/4"	14.02
TK M200PLG050	2" Std. Port Plug	1/2"	14.02
TK M220PLG038	2" Full Port Plug	3/8"	23.50
TK M200PLG075	2" Std. Port Plug	3/4"	14.02
TK M220PLG075	2" Full Port Plug	3/4"	21.36
TK M200PLG100	2" Std. Port Plug	1"	14.02
TK M300PLG100	3" Std. Port Plug	1"	26.12
TK M300PLG075	3" Flange Plug	3/4"	25.35

10% Discount on Pkg. of 10

Flange x Hose Barb Tees



Part No.	Size	Net Ea.
TK M100075HBT	1" Flange x 3/4" Hose Barb Tee	\$ 13.17
TK M100100HBT	1" Flange x 1" Hose Barb Tee	8.37
TK M220200HBT	2" FP Flange x 2" Hose Barb Tee	15.52
TK M300300HBT	3" Flange x 3" Hose Barb Tee	33.80

10% Discount on Pkg. of 10

Flange Clamps

Part No.	Description	Net Ea.
TK FC100	1" Flange Clamp	\$ 5.80
TK FC200	2" Flange Clamp	6.80
TK FC220	2" Flange Clamp, Full Port	6.90
TK FC300	3" Flange Clamp	9.50



Flange Clamp

BANJO T-Bolt Flange Clamps & Gaskets

Part No.	Description	Net Ea.
TK FC220TB	2" T Bolt Flange Clamp, Full Port	\$ 31.00
TK FC300TB	3" T Bolt Flange Clamp	32.75
TK M221G	2" Full Port EPDM Gasket	2.20
TK 200GV	2" Full Port Viton® Gasket	8.99
TK M301G	3" EPDM Gasket	2.35
TK 300GV	3" Viton® Gasket	18.00

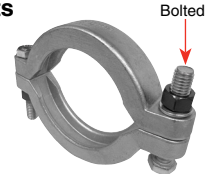


T Bolt

BANJO Bolted Flange Clamps

— HEAVY DUTY — & Gaskets

Part No.	Description	Net Ea.
TK FC220B	2" Bolted Flange Clamp, Full Port	\$ 48.60
TK FC300B	3" Bolted Flange Clamp	52.40
TK M221G	2" Full Port EPDM Gasket	2.20
TK 200GV	2" Full Port Viton® Gasket	8.99
TK M301G	3" EPDM Gasket	2.35
TK 300GV	3" Viton® Gasket	18.00



Bolted

Bolted

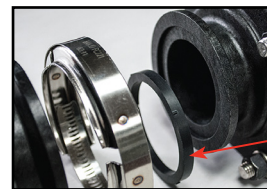


Mounting "U" Bolts 200 Series • Stainless Steel

To be used with Banjo flanged fittings.
Note: This is Not a Standard U-Bolt.

Part No.	Description	Net Ea.
TK UB100	1" U-Bolt	\$ 24.23
TK UB200	2" U-Bolt	24.48
TK UB220	2" FP U-Bolt	25.90
TK UB300	3" U-Bolt	61.35

Standard Square Flange Gaskets



EPDM Gaskets are ribbed to keep in place during assembly



Part No.	Description	Net Ea.
TK M100G	1" EPDM Gasket *	\$ 1.80
TK M100GV	1" Viton® Gasket	6.22
TK M201G	2" EPDM Standard Port Gasket *	2.20
TK 150GV	2" Viton® Standard Port Gasket	6.30
TK M221G	2" Full Port EPDM Gasket *	2.20
TK 200GV	2" Full Port Viton® Gasket	8.99
TK M301G	3" EPDM Gasket *	2.35
TK 300GV	3" Viton® Gasket	18.00

* Ribbed.

Skirted Flange Gaskets

1" to 3" EPDM



Skirted Flange Gasket

Skirted design aligns with manifold flanges. Stays in place during connection and provides visible confirmation that gasket is properly set. Outside grooves confirm visual alignment. Can be used with the above flange clamps.

Part No.	Description	Net Ea.
TK M102G	1" Skirted Flange Gasket	\$ 2.00
TK M202G	2" Std. Port Skirted Flange Gasket	2.00
TK M222G	2" Full Port Skirted Flange Gasket	2.20
TK M302G	3" Std. Port Skirted Flange Gasket	2.90

POLYPROPYLENE PIPE FITTINGS



Polypropylene PIPE FITTINGS

Features: Reinforced Polypropylene • Heavy Duty (Schedule 80) • For fertilizers, agchemical & water • 150 PSI Min - W.P. at 70° F.
• Excellent Chemical Resistance • FDA approved for potable water

Pipe Nipples (Long Sizes)



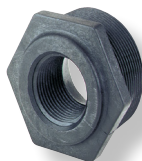
Part No.	Size	Std. Pkg.	Net Ea.
TK 900-1/4XCL	1/4" x Close	10	\$ 1.41
TK 900-3/8XCL	3/8" x Close	10	1.51
TK 900-1/2XCL	1/2" x Close	10	1.70
TK 900-1/2X3	1/2" x 3"	10	2.99
TK 900-3/4XCL	3/4" x Close	10	1.70
TK 900-3/4X4	3/4" x 4"	10	3.10
TK 900-3/4X6	3/4" x 6"	10	3.66
TK 900-1XCL	1" x Close	10	1.80
TK 900-1X4	1" x 4"	10	3.30
TK 900-1X6	1" x 6"	10	4.09
TK 900-1-1/4XCL	1-1/4" x Close	10	2.31
TK 900-1-1/4X4	1-1/4" x 4"	10	4.09
TK 900-1-1/4X6	1-1/4" x 6"	10	4.66
TK 900-1-1/2XCL	1-1/2" x Close	10	3.54
TK 900-1-1/2X3	1-1/2" x 3"	10	5.26
TK 900-1-1/2X4	1-1/2" x 4"	10	8.73
TK 900-1-1/2X6	1-1/2" x 6"	10	10.27
TK 900-2XCL	2" x Close	10	4.00
TK 900-2X4	2" x 4"	10	8.45
TK 900-2X6	2" x 6"	10	9.80
TK 900-3XCL	3" x Close	10	11.90
TK 900-3X4	3" x 4"	10	18.88
TK 900-3X6	3" x 6"	10	24.34
TK 900-4XCL	4" x Close	10	23.48

Hex Nipples (Close Sizes)



TK 901-3/8X1/4	3/8" x 1/4"	10	\$ 3.10
TK 901-1/2X1/4	1/2" x 1/4"	10	2.59
TK 901-1/2X3/8	1/2" x 3/8"	10	3.10
TK 901-3/4X1/4	3/4" x 1/4"	10	3.10
TK 901-3/4X3/8	3/4" x 3/8"	10	3.10
TK 901-3/4X1/2	3/4" x 1/2"	10	3.10
TK 901-1X1/4	1" x 1/4"	10	3.30
TK 901-1X1/2	1" x 1/2"	10	3.30
TK 901-1X3/4	1" x 3/4"	10	3.20
TK 901-1-1/4X3/4	1-1/4" x 3/4"	10	3.30
TK 901-1-1/4X1	1-1/4" x 1"	10	3.30
TK 901-1-1/2X3/4	1-1/2" x 3/4"	10	4.35
TK 901-1-1/2X1	1-1/2" x 1"	10	4.30
TK 901-1-1/2X114	1-1/2" x 1-1/4"	10	4.35
TK 901-2X3/4	2" x 3/4"	10	3.90
TK 901-2X1	2" x 1"	10	3.90
TK 901-2X1-1/4	2" x 1-1/4"	10	4.74
TK 901-2X1-1/2	2" x 1-1/2"	10	3.90
TK 901-3X1-1/2	3" x 1-1/2"	10	19.73
TK 901-3X2	3" x 2"	10	16.40
TK 901-4X3	4" x 3"	10	29.00

Bushings MPT x FPT

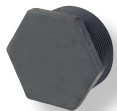


TK 902-1X3/4	1" x 3/4"	10	\$ 7.01
TK 902-1-1/2X1	1-1/2" x 1"	10	11.91
TK 902-1-1/2X114	1-1/2" x 1-1/4"	10	11.91
TK 902-2X1/2	2" x 1/2"	10	12.66
TK 902-2X1	2" x 1"	10	10.40
TK 902-2X1-1/4	2" x 1-1/4"	10	12.66
TK 902-2X1-1/2	2" x 1-1/2"	10	10.40
TK 902-3X2	3" x 2"	10	37.50

Reducers



Plugs



TK 903-1/4	1/4"	10	\$ 3.28
TK 903-3/8	3/8"	10	3.28
TK 903-1/2	1/2"	10	3.30
TK 903-3/4	3/4"	10	3.30
TK 903-1	1"	10	3.20
TK 903-1-1/4	1-1/4"	10	4.33
TK 903-1-1/2	1-1/2"	10	4.33
TK 903-2	2"	10	4.30
TK 903-3	3"	10	20.63

Caps



TK 904-3/8	3/8"	10	\$ 2.53
TK 904-1/2	1/2"	10	6.36
TK 904-3/4	3/4"	10	6.36
TK 904-1	1"	10	5.30
TK 904-1-1/4	1-1/4"	10	7.15
TK 904-1-1/2	1-1/2"	10	9.01
TK 904-2	2"	10	10.43
TK 904-3	3"	10	37.31

Couplings



Part No.	Size	Std. Pkg.	Net Ea.
TK 905-1/4	1/4"	10	\$ 4.23
TK 905-3/8	3/8"	10	4.74
TK 905-1/2	1/2"	10	4.74
TK 905-3/4	3/4"	10	4.50
TK 905-1	1"	10	4.50
TK 905-1-1/4	1-1/4"	10	7.27
TK 905-1-1/2	1-1/2"	10	10.00
TK 905-2	2"	10	11.30
TK 905-3	3"	10	31.00

Tees



TK 906-1/4	1/4"	10	\$ 4.43
TK 906-3/8	3/8"	10	4.58
TK 906-1/2	1/2"	10	4.00
TK 906-3/4	3/4"	10	4.30
TK 906-1	1"	10	6.20
TK 906-1-1/4	1-1/4"	10	8.60
TK 906-1-1/2	1-1/2"	10	9.80
TK 906-2	2"	10	12.80
TK 906-3	3"	10	54.00

90° Elbows



TK 907-1/4	1/4"	10	\$ 3.40
TK 907-3/8	3/8"	10	4.58
TK 907-1/2	1/2"	10	4.15
TK 907-3/4	3/4"	10	3.76
TK 907-1	1"	10	4.40
TK 907-1-1/4	1-1/4"	10	6.62
TK 907-1-1/2	1-1/2"	10	9.87
TK 907-2	2"	10	10.27
TK 907-3	3"	10	49.50

45° Elbow



Part No.	Size	Std. Pkg.	Net Ea.
TK EL100-45	1"	-	\$ 14.26

90° Street Elbows



Part No.	Size	Std. Pkg.	Net Ea.
TK 908-1/4	1/4"	10	\$ 3.40
TK 908-3/8	3/8"	10	3.99
TK 908-1/2	1/2"	10	3.60
TK 908-3/4	3/4"	10	3.70
TK 908-1	1"	10	4.40
TK 908-1-1/4	1-1/4"	10	6.30
TK 908-1-1/2	1-1/2"	10	8.90
TK 908-2	2"	10	10.60
TK 908-3	3"	10	51.00

45° Street Elbows



TK 912-3/4	3/4"	10	\$ 7.47
TK 912-1	1"	10	10.03
TK 912-1-1/4	1-1/4"	10	12.42
TK 912-1-1/2	1-1/2"	10	12.50
TK 912-2	2"	10	14.30
TK 912-3	3"	10	55.50

Crosses



TK 909-3/8	3/8"	10	\$ 13.59
TK 909-1/2	1/2"	10	21.03
TK 909-3/4	3/4"	5	21.03
TK 909-1	1"	5	21.03
TK 909-1-1/4	1-1/4"	5	31.33
TK 909-1-1/2	1-1/2"	5	31.33
TK 909-2	2"	5	31.98

THREAD SEALANT FOR POLYPROPYLENE FITTINGS: #7 Rectorseal is best for AGR/Chemicals & fertilizers including acid based. #5 or #21 Rectorseal (Same product, #21 is black) would be second choice but will not handle acid based products. All should have a 24 hour cure time before pressurizing the system. On large size threads (2"+), must apply to both sides.

Less 10% Discount On Std. Pkgs.

POLYPROPYLENE CAM LEVER COUPLINGS



Polypropylene Cam Lever Couplings

Features: EPDM Gaskets. • 304 Stainless Levers, Pins, and Rings. EPDM Gaskets Std. • Operating Pressure: 3/8" thru 2": 100 PSI @ 0° F.; 125 PSI @ 70° F. 2-1/2", 3" & 4" Cap-50 PSI Couplings 75 PSI Max. • FDA approved for potable water.

Note: P303C & All 4" couplings have 3 arms for positive seal!



FPT Adapters with Tabs

Part No.	Size	Net Ea.
TK 75A-1/2SA	1/2" †	\$ 3.36

A



Adapters x FPT

Part No.	Size	Description	Net Ea.
TK P050A	1/2"	3/4" Adapter x 1/2" FPT	\$ 5.60
TK P075A	3/4"	Female Adapter	4.40
TK P100A	1"	Female Adapter	4.60
TK P125A	1-1/4"	1" Adapter x 1-1/4" FPT	5.04
TK P150A	1-1/2"	Female Adapter	5.00
TK P150125A	1-1/2"	1-1/2" Adapter x 1-1/4" FPT	6.85
TK P200A	2"	Female Adapter	5.90
TK P300A	3"	Female Adapter	14.50
TK P400A	4"	Female Adapter	27.75

A



Couplers x MPT

Part No.	Size	Description	Net Ea.
TK P050B	1/2" †	3/4" Coupler x 1/2" MPT**	\$ 12.10
TK P075B	3/4"	Male Cplr w/Groove	10.00
TK P100B	1"	Male Coupler	10.60
TK P125B	1-1/4"	1" Coupler x 1-1/4" MPT	12.30
TK P150B	1-1/2"	Male Coupler	13.70
TK P150125B	1-1/2"	1-1/2" Coupler x 1-1/4" MPT	17.80
TK P200B	2"	Male Coupler	16.20
TK P201B	2" x2-1/2"	Male Coupler Extended Threads	16.80
TK P300B	3"	Male Coupler	27.75
TK P303B	3" x3"	Male Cplr w/3 Cams Extend Threads	36.75
TK P400B	4"	Male Coupler	71.50

B



Couplers x HB

Part No.	Size	Description	Net Ea.
TK P050C	1/2"	3/4" Coupler x 1/2" HB	\$ 9.80
TK P075C	3/4"	Shank Coupler	10.10
TK P100C	1"	Shank Coupler	10.60
TK P125C	1-1/4"	1" Coupler x 1-1/4" HB	11.40
TK P150C	1-1/2"	Shank Coupler	12.00
TK P150125C	1-1/2"	1-1/2" Coupler x 1-1/4" HB	17.40
TK P200C	2"	Shank Coupler	16.20
TK P200150C	2"	2" Coupler x 1-1/2" HB	19.40
TK P300C	3"	Shank Coupler	27.00
TK P303C	3"	Shk Cplr/3 Cplr Arm	34.75
TK P400C	4"	Shank Coupler	54.00

C



Couplers x FPT

Part No.	Size	Description	Net Ea.
TK P050D	1/2"	3/4" Coupler x 1/2" FPT**	\$ 11.10
TK P075D	3/4"	Female Coupler	10.00
TK P100D	1"	Female Coupler	11.30
TK P125D	1-1/4"	1" Coupler x 1-1/4" FPT	12.30
TK P150D	1-1/2"	Female Coupler	13.20
TK P150125D	1-1/2"	1-1/2" Coupler x 1-1/4" FPT	17.40
TK P200D	2"	Female Coupler	16.20
TK M220D	2" ***	2" FP Flange x 2" Fm Coupler	21.60
TK P300D	3"	Female Coupler	27.75
TK M303D	3" ***	3" Flange x 3" Fm Coupler	41.00
TK P400D	4"	Female Coupler	59.00

D



Adapters x HB

Part No.	Size	Description	Net Ea.
TK P050E	1/2"	3/4" Adapter x 1/2" HB	\$ 5.00
TK P075E	3/4"	Shank Adapter	5.00
TK P100E	1"	Shank Adapter	5.50
TK P125E	1-1/4"	1" Adapter x 1-1/4" HB	5.80
TK P150E	1-1/2"	Shank Adapter	5.70
TK P150125E	1-1/2"	1-1/2" Adapter x 1-1/4" FPT	7.10
TK P200E	2"	Shank Adapter	6.90
TK P300E	3"	Shank Adapter	18.80
TK P400E	4"	Shank Adapter	28.50

E



Adapters x MPT

Part No.	Size	Description	Net Ea.
TK P050F	1/2"	3/4" Adapter x 1/2" MPT	\$ 5.20
TK P075F	3/4"	Male Adapter	5.00
TK P100F	1"	Male Adapter	5.20
TK P125F	1-1/4"	1" Adapter x 1-1/4" MPT	5.80
TK P150F	1-1/2"	Male Adapter	5.50
TK P150125F	1-1/2"	1-1/2" Adapter x 1-1/4" MPT	6.90
TK P200F	2"	Male Adapter	6.90
TK P300F	3"	Male Adapter	18.00
TK P400F	4"	Male Adapter	28.00

F

Caps

Part No.	Size	Description	Net Ea.
TK P075CAP	3/4"	Dust Cap	\$ 10.40
TK P100CAP	1"	Dust Cap	10.00
TK P150CAP	1-1/2"	Dust Cap	13.70
TK P200CAP	2"	Dust Cap	16.20
TK P300CAP	3"	Dust Cap	27.75
TK P400CAP	4"	Dust Cap	41.25



CAP

Poly Plugs

Part No.	Size	Description	Net Ea.
TK P075PL	3/4"	Poly Plug	\$ 5.00
TK P100PL	1" & 1-1/4"	Poly Plug	4.80
TK P150PL	1-1/2"	Poly Plug	6.60
TK P200PL	2"	Poly Plug	6.80
TK P300PL	3"	Poly Plug	14.70
TK P400PL	4"	Poly Plug	21.40



PL

Elbow Adapters x FPT

Part No.	Size	Description	Net Ea.
TK P150A-90	1-1/2"	Elbow Adapter X FPT	\$ 10.50
TK P200A-90	2"	Elbow Adapter X FPT	11.70



A90

Elbow Couplers x HB

Part No.	Size	Description	Net Ea.
TK P150C-90	1-1/2"	Elbow Coupler X HB	\$ 21.80
TK P200C-90	2"	Elbow Coupler X HB	20.20



C90

Elbow Couplers x FPT

Part No.	Size	Description	Net Ea.
TK P150D-90	1-1/2"	Elbow Coupler X FPT	\$ 21.40
TK P200D-90	2"	Elbow Coupler X FPT	21.20



D90

Elbow Adapters x MPT

Part No.	Size	Description	Net Ea.
TK P150F-90	1-1/2"	Elbow Adapter X MPT	\$ 12.00
TK P200F-90	2"	Elbow Adapter X MPT	10.60



F90

45° Male Adapter

Part No.	Size	Description	Net Ea.
TK P200F-45	2"	45° Male Adapter x 2" Male Thread	\$ 20.20



F45

Elbow Coupler x MPT

Part No.	Size	Description	Net Ea.
TK P200B-90	2"	90° Female Coupler x 2" Male Thread	\$ 24.40



B90

** With Guide Lock. † 75A Adapters with tab fit P050B & P075B Male Couplers with groove. *** Manifold Flange Style.

Note: On 1/2" size the coupler & adapter ends are 3/4". Threads & Hose Barbs are 1/2". On 1-1/4" size the coupler & adapter ends are 1". Threads & hose barbs are 1-1/4"

STRAINERS



"Y" Line Strainers Threaded



LSQ Style

- Polypropylene
- EPDM Gaskets
- 75 PSI on 1/2" - 1-1/4"
- 150 PSI on 1-1/2" - 2"
- 50 PSI on 3"
- Multiple screens available



3/4" THRU 2"

Part No.	Ports	Screen	Net Ea.
TK LS075-40	3/4" FPT	40-Mesh	\$ 33.00
TK LS075-80	3/4" FPT	80-Mesh	38.25
TK LS100-40	1" FPT	40-Mesh	32.50
TK LS125-40	1-1/4" FPT	40-Mesh	37.50
TK LS150-20	1-1/2" FPT	20-Mesh	77.50
TK LS200-20	2" FPT	20-Mesh	73.00
TK LSQ150-50	1-1/2" FPT	50-Mesh	78.50
TK LSQ200-20	2" FPT	20-Mesh	122.00
TK LSQ200-50	2" FPT	50-Mesh	120.00
TK LSM300BC	3" FPT	* None	369.00
TK LS304	4-Mesh Stainless Screen, 3"		157.00
TK LS308	8-Mesh Stainless Screen, 3"		157.00
TK LS312	12-Mesh Stainless Screen, 3"		157.00
TK LS320	20-Mesh Stainless Screen, 3"		133.00
TK LS350	50-Mesh Stainless Screen, 3"		149.00
TK LS380	80-Mesh Stainless Screen, 3"		142.00

* 3" strainer for suction side use only.

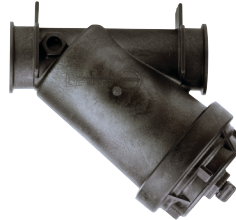
2" Flanged "Y" Strainers

- 2" Standard Port • EPDM Gaskets
- 150 PSI W.P. • Stainless Screens



Part No.	Description	Net Ea.
TK MLS200-20	20 Mesh 2" Strainer Std. Port	\$ 89.00
TK MLS200-50	50 Mesh 2" Strainer Std. Port	89.00
TK LS220	20 Mesh Replacement Screen for 2"	51.30
TK LS250	50 Mesh Replacement Screen for 2"	51.00
TK LS280	80 Mesh Replacement Screen for 2"	48.60

2" Screens Also Available in 6, 12, 30, 100 & 120 Mesh.



Flanged "Y" Strainers 2" & 3" Full Port



- EPDM Gaskets • 75 PSI W.P. • 304 Stainless Screens

Part No.	Description	Net Ea.
TK MLS222-50	* 2" Full Port Flanged "Y" Strainer with 50 Mesh Screen	\$ 121.00
TK MLS222-30	2" Full Port Flanged "Y" Strainer with 30 Mesh Screen	121.00
TK MLS300-20	** 3" Full Port Flanged "Y" Strainer with 20 Mesh Screen	435.00
TK LST210SS	10 Mesh Stainless Screen, 2", FP ...	72.00
TK LST216SS	16 Mesh Stainless Screen, 2", FP ...	72.00
TK LST230SS	30 Mesh Stainless Screen, 2", FP ...	65.00
TK LST250SS	50 Mesh Stainless Screen, 2", FP ...	65.00
TK LST280SS	80 Mesh Stainless Screen, 2", FP ...	72.00
TK LS304	4-Mesh Stainless Screen, 3"	157.00
TK LS308	8-Mesh Stainless Screen, 3"	157.00
TK LS312	12-Mesh Stainless Screen, 3"	157.00
TK LS320	20-Mesh Stainless Screen, 3"	133.00
TK LS350	50-Mesh Stainless Screen, 3"	149.00
TK LS380	80-Mesh Stainless Screen, 3"	142.00

* 2" FP Screens Also Available in 4, 6, 8, 12, 20, & 100 Mesh.

Flanged "T" Strainers

- EPDM Gaskets • 150 PSI • Stainless Screens



Part No.	Description	Net Ea.
TK MLST100-50	50 Mesh 1" Strainer	\$ 43.75
TK MLST150-50	50 Mesh 2" Strainer	74.00
TK LST130	30 Mesh Replacement Screen for 1"	23.54
TK LST150	50 Mesh Replacement Screen for 1"	22.61
TK LST180	80 Mesh Replacement Screen for 1"	21.38
TK LST1530	30 Mesh Replacement Screen for 2"	35.89
TK LST1550	50 Mesh Replacement Screen for 2"	35.36
TK LST1580	80 Mesh Replacement Screen for 2"	38.18

16 & 100 Mesh also available.

Strainer Replacement Parts In Stock



HYPRO® TeeJet



Replacement Screens



- Different Mesh Available -

Replacement O-Rings/Gaskets



Replacement Bowls



3350-44N Nylon



122 & 124A Polypropylene 1/2", 3/4" & 1"

Line Strainers TeeJet HYPRO®

Part No.	Ports	Bowl	Screen	Net Ea.
HY 3350-44N	3/4" FPT	White	50-Mesh	\$ 22.20
HY 3350-44P	3/4" FPT	Clear	50-Mesh	28.25
HY 3350-45N	3/4" FPT	White	80-Mesh	22.20
HY 3350-45P	3/4" FPT	Clear	80-Mesh	27.25
HY 3350-61N	1" FPT	White	50-Mesh	39.00
HY 3350-61P	1" FPT	Clear	40-Mesh	45.50
HY 3350-75N	1-1/4" FPT	White	40-Mesh	40.25
HY 3350-75P	1-1/4" FPT	Clear	40-Mesh	48.25
HY 3350-116N	1-1/2" FPT	White	50-Mesh	54.00
HY 3350-116P	1-1/2" FPT	Clear	50-Mesh	60.00

Part No.	Size	Mesh	Net Ea.
SS 122-1/2PP	1/2" Strainer, Poly Head & Bowl	50	\$ 15.80
SS 122-3/4PP	3/4" Strainer, Poly Head & Bowl	50	15.40

SUCTION - DISCHARGE - HOSE

Black EPDM Sprayer Hose

2-Spiral (1 Braid) - 150 PSI & (2 Braid) - 200 PSI

Sold Per Foot (Can Be Cut)		W.P.	*Std.	Net Ea.
Part No.	Size	PSI	Pkg.	Per Ft.
GA 3204EB-3/8	3/8"	200	400'	\$ 1.40

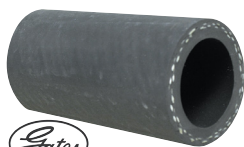
Net Ea.	25% Discount On Std. Pkg.
\$ 1.40	



Sold In UPSABLE Reels Only		W.P.	*Std.	Net Ea.
Part No.	Size	PSI	Pkg.	Per Ft.
GA 3204EB-1/2	1/2"	200	250'	\$ 1.50
GA 3204EB-3/4X200	3/4"	200	200'	3.10
GA 3204EB-1	1"	200	125'	2.50

Net Ea.	25% Discount On Std. Pkg.
\$ 1.50	
3.10	
2.50	

* Standard Packages Here Can Ship UPS



EPDM "Adapta-Flex" Agricultural SPRAY HOSE

2-Braid • 200 - 250 PSI

Sold Per Foot (Can Be Cut)		Color	Working Pressure	Approx. Std.	Net Ea.
Part No.	SIZE	PSI	Pkg.	Per Ft.	25% Discount On Std. Pkg.
GA 1B-3/8X2	3/8"	Red	250	400'	\$ 2.20
GA 1B-5/8X2	5/8"	Red	250	250'	4.30
GA 1B-1-1/4X2	1-1/4"	Black	250	200'	6.70
GA 1B-1-1/2X2	1-1/2"	Black	200	200'	9.60
GA 6B-2	2"	Red	200	100'	10.90

Net Ea.	25% Discount On Std. Pkg.
\$ 2.20	
4.30	
6.70	
9.60	
10.90	

Sold In UPSABLE Reels Only		Color	Working Pressure	Approx. Std.	Net Ea.
Part No.	SIZE	PSI	Pkg.	Per Ft.	25% Discount On Std. Pkg.
GA 1B-1/2X2	1/2"	Red	250	250'	\$ 2.00
GA 1B-3/4X2	3/4"	Red	250	200'	3.00
GA 1B-1X2	1"	Red	200	125'	4.60

Net Ea.	25% Discount On Std. Pkg.
\$ 2.00	
3.00	
4.60	



EPDM Suction Hose

100 PSI; Abrasion Resistant Cover

Part No.	I.D.	O.D.	Std. Pkg.	Working Press. PSI	Net Ea. Per Foot
KA 390SD-1-1/4	1-1/4"	1.80"	100'	100	\$ 4.40
KA 390SD-1-1/2	1-1/2"	2.10"	100'	100	5.30
KA 390SD-2	2"	2.60"	100'	100	6.80
KA 390SD-3	3"	3.70"	100'	100	11.80
* TF TSD400	4"	4.53"	100'	100	25.00



* 25% Discount for Std. Package

Heavy Duty EPDM Rubber Suction / Discharge Hose

150 PSI, Flexible



Heavy Duty Water Suction/Discharge Hose for fertilizer, water & diluted ag chemicals. Black EPDM cover and tube. Wire helix reinforcement. Maximum Working Pressure is 150PSI. Temperature Rating: -40°F to 212°F. Cut Lengths Sold in 5' Increments Only.

Part No.	I.D.	O.D.	* Std. Pkg.	Working Pressure	Bend Radius (in @ 68°F)	** Vacuum Rating (inHG)	Per Foot Net Ea.
TF T202-1	1"	1.38"	100'	150 PSI	4"	30"	\$ 5.60
TF T202-1-1/4	1-1/4"	1.65"	100'	150 PSI	5"	30"	6.30
TF T202-1-1/2	1-1/2"	1.89"	100'	150 PSI	6"	30"	6.50
TF T202-2	2"	2.40"	100'	150 PSI	8"	30"	6.90
TF T202-3	3"	3.46"	100'	150 PSI	10"	30"	11.00
TF T202-4	4"	4.49"	100'	150 PSI	12"	27"	15.80
TF T202-6	6"	6.54"	100'	150 PSI	30"	24"	30.25

** Full Vacuum is 30" HG

25% Discount for Standard Package

tigerflex® Suction & Discharge Hose

Thermo Plastic EPDM

Flexible EPDM Rubber Hose with green or yellow polyethylene helix combines chemical resistance with durability. Excellent cold weather flexibility. Weather resistant exterior. Lightweight and easy-to-handle. Abrasion resistant design slides easily on rough surfaces. Rated from -40 to 160° F. Full vacuum rating to 4" size at 68°. Sold in rolls, cut to length and fitted assemblies.



Series TG / 300G Green



Series TY / 300Y Yellow

- Agriculture Liquid & Dry Fertilizers
- Liquid & Dry Chemical
- Grains & Seeds
- Water Transfer
- Septic Handling
- Liquid Waste, Slurries

NOTE: CUT LENGTHS SOLD IN 5' INCREMENTS ONLY

Part No.	I.D.	O.D.	Color	Working PSI @ 68° F.	Wt./Lbs. Per Foot	Net Ea. * Per Foot
TF TG100	1"	1.40"	Green	65	.28	\$ 2.80
TF TG125	1-1/4"	1.63"	Green	60	.33	3.20
TF TG150	1-1/2"	1.93"	Green	50	.44	3.50
TF TG200	2"	2.51"	Green	50	.67	5.10
TF TG250	2-1/2"	3.07"	Green	45	.95	8.50
TF TG300	3"	3.60"	Green	45	1.14	9.90
TF TG400	4"	4.70"	Green	40	1.84	16.20
TF TG600	6"	6.85"	Green	30	3.70	34.25
TF TY100	1"	1.40"	Yellow	65	.28	2.90
TF TY125	1-1/4"	1.63"	Yellow	60	.33	3.55
TF TY150	1-1/2"	1.93"	Yellow	50	.44	3.80
TF TY200	2"	2.51"	Yellow	50	.67	5.40
TF TY300	3"	3.60"	Yellow	45	1.14	10.40
TF TY400	4"	4.70"	Yellow	40	1.84	13.00
TF TB200	2"	2.51"	Blue	50	.67	5.70
TF TB300	3"	3.60"	Blue	45	1.14	10.80

*25% Discount if Ordered in 100' Rolls



Stainless T-Bolt Clamps

With Floating Bridge

Can be torqued 3-4 times that of a worm drive clamp. 150 in/lbs. maximum torque at screws. 3/4" Smooth stainless Steel band, bolt & housing. Note: Check hose I.D. and note Clamp O.D. range before ordering.

Part No.	Hose I.D.	O.D. Range	Std. Pkg.	Per Clamp Net Ea.
TK TC138	1-1/4"	1.38" to 1.52"	10	\$ 10.40
TK TC163	1-1/4"	1.63" to 1.81"	10	10.40
TK TC175	1-1/2"	1.75" to 2.00"	10	10.60
TK TC188	1-1/2"	1.88" to 2.19"	10	13.10
TK TC194	1-1/2"	1.94" to 2.25"	10	11.00
TK TC219	2"	2.19" to 2.50"	10	10.80
TK TC231	2"	2.31" to 2.63"	10	9.80
TK TC244	2"	2.44" to 2.75"	10	11.00
TK TC250	2"	2.50" to 2.81"	10	13.40
TK TC288	2"	2.88" to 3.19"	10	10.40
TK TC325	3"	3.25" to 3.56"	10	11.70
TK TC331	3"	3.31" to 3.63"	10	11.75
TK TC338	3"	3.38" to 3.69"	10	9.91
TK TC350	3"	3.50" to 3.81"	10	14.00
TK TC400	4"	4.00" to 4.31"	10	14.80
TK TC419	4"	4.19" to 4.50"	10	9.00
TK TC425	4"	4.25" to 4.56"	10	15.60
TK TC438	4"	4.38" to 4.69"	10	11.90
TK TC450	4"	4.50" to 4.81"	10	15.80

* Quantity Discount: 10% on Packages of 10.

MINI-BULK PUMPS & FLOW METERS

CT6 AgChem Pump Kits for Cage Tanks

These diaphragm pumps are designed to transfer agchemicals at up to **13-14 GPM (17-18 GPM for HF models.)** Fitted with EPDM or Viton seals for resistance to most agchemicals and other selected products.

CT6 Kits Include: CT6 pump with bracket to secure to cage tanks, suction hose with 2" female camlock discharge hose, SEM10 meter and nozzle valve. Pumps only include suction tube & bung adapter.



Part No.	Description	Net Ea.
SI CT6-PO-E	CT6 PUMP ONLY, 12 Volt	\$ 469.00
SI CT6-PO115-E	CT6 PUMP ONLY, 115 Volt	539.00
SI CT6-M-E	CT6 Pump/Meter Kit, 12 Volt, EPDM.....	795.00
SI CT6-M-V	CT6 Pump/Meter Kit for Cage Tank, 12 Volt, Viton®	825.00
SI CT6HF-E	CT6 High Flow Pump/Meter Kit, 12V, EPDM.	849.00
SI CT6-LM-E	CT6 Cage Tank Pump Kit, LESS Meter 12 Volt..	729.00
SI CT6HF-V	CT6HF High Flow Pump/Meter Kit, 12 Volt, Viton®	899.00
SI CT6HF-LM-V	CT6HF Cage Tank Pump Kit, LESS Meter 12V, Viton®	749.00
SI CT6-M-115-E	CT6 Pump/Meter Kit, 115 Volt	869.00
SI CT6-M-115-V	CT6 Pump/Meter Kit for Cage Tank, 115 Volt, Viton®	939.00



CT6 AgChemical Caddy Kits

Caddy Versions include the same features as above and are enclosed in a convenient steel carrying frame, with SEM-10 meter, 1" x 12' discharge hose and ball valve nozzle.



CT6-CAD-115



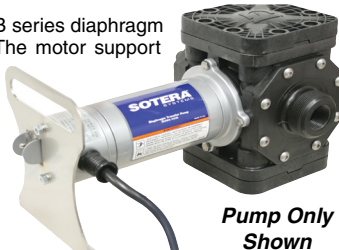
SI	CT6-CAD-E	CT6 Caddy System, 12 Volt, EPDM.....	Net Ea.
SI	CT6-CAD-V	CT6 Caddy System, 12 Volt, Viton®.....	998.00

SOTERA Tote & Go Pump Kits

Use For:

Agchemicals • Fertilizers • Seed Treatment Liquids • Propionic Acid (Hay Treatment) • Anti-Freeze • Motor Oil • Waste Oil (with Inlet Screen) • Hydraulic Fluid • Transmission Fluid • Soaps & Cleaning Fluids • Deicing Liquids

These versions of the Sotera 400B series diaphragm pump offer maximum flexibility. The motor support bracket allows the unit to set level on the ground or atop a mini-bulk tank. 2" Camlock inlet and 1" FPT outlet. Available in 12V or 115V pumps & pump kits (kits include 1 x 36" suction hose and 1" x 12' EPDM discharge hose with nozzle valve and fittings.



Pump Only Shown

Part No.	Description	Amp Draw	Net Ea.
FR 415X731	12 Volt pump only	12.0	\$ 734.00
FR 415X731PG	12 Volt pump kit	12.0	866.00
FR 460X731	115 Volt pump only	12.0	717.00
FR 460X731PG	115 Volt pump kit	12.0	880.00
FR F1855	1" Telescoping Suction Tube.....		35.25

Electronic Flow Meters

Dura • Sotera • Scienco • GPI • Fill-Rite



Model SEM10



Model 825



Model OM025P001-826R7G



Model OM025P001-822



Model 3000E



Model TT10PN

FILL-RITE

Part No.	Size	Flowrate	Max. Pressure	Net Ea.
** FR 825	Sotera 1" FPT	2-20 GPM	120 PSI	\$ 305.00
FR TT10PN	Sotera 1" FPT	2-35 GPM	50 PSI	258.00
* FR 850	Sotera 1" FPT	2-20 GPM	120 PSI	396.00
SI SEM10	Sotera 1" MPT	2-30 GPM	60 PSI	265.00
† SI SEM10FTE	Sotera 1" MPT	3-30 GPM	100 PSI	259.00
** SI SEM10FTV	Sotera 1" MPT	3-30 GPM	100 PSI	273.00
DP 3000E	Dura 1"	2-22 GPM	40 PSI	346.00
** DP 3000V	Dura 1"	2-22 GPM	40 PSI	357.00
GI OM025P001-826R7G	1" FPT	3-40 GPM	175 PSI	1123.00
‡ GI OM025P001-822	1" FPT	3-40 GPM	175 PSI	715.00
GI RT406D0FM	RT40 Remote Display Only			429.00

* Includes Air Eliminator. † Hose End Style. ** V= Viton® Seals & Hose End Style ‡ Meter Only - No Display

Dura High Flow Meters Viton® & EPDM



Part No.	GPM Range	Net Ea.
DP HFM2V	2" Dura-Meter, Viton® 40-300	\$ 1047.00
DP HFM3V	3" Dura-Meter, Viton® 80-700	1320.00
DP HFM2E	2" Dura-Meter, EPDM 40-300	1064.00
DP HFM3E	3" Dura-Meter, EPDM 80-700	1320.00



Part No.	Net Ea.
GD HS9379	\$ 55.50

Hose Assemblies EPDM for Herbicides

These EPDM Hose Assemblies are first quality replacement for HERBICIDE HOSES. 1" x 12' with 1" MNPT crimped ends.

CHEMICAL TRANSFER SYSTEMS



Dura-Pump™ 15 GPM

Part No.	Description	Net Ea.
DP 6018E-12	12 Volt Pump Only, EPDM.....	\$ 739.00
DP 6018E-110	115 Volt Pump Only, EPDM.....	795.00
DP 6018V-12	12 Volt Pump Only, Viton®	783.00
DP 6018V-110	115 Volt Pump Only, Viton®	859.00
DP T4001	1" Telescoping Suction Tube.....	38.75

Repair Kits Also Available

Dura-Pump™ Easy Caddy Systems



FEATURES: Can be mounted in (6) different configurations on a variety of tank/tote and drum types • 1" x 5' Suction hose & 1" x 12' Discharge hose with ball valve nozzle • Polypropylene fittings & 2" camlock for cage tank bottom port suction • Optional meter is DP 3000E or DP 3000V • Features 2 Year Warranty.



Part No.	Description	Net Ea.
DP E6018E-12	12 Volt Pump Only, EPDM.....	\$ 855.00
DP E6018E-110	115 Volt Pump Only, EPDM.....	927.00
DP E6018V-12	12 Volt Pump Only, Viton®	895.00
DP E6018V-110	115 Volt Pump Only, Viton®	995.00
DP 3000V	1" Meter, Viton®.....	357.00
DP 3000E	1" Meter, EPDM.....	346.00

Dura™ Auto Batch Systems

An Economical Transfer System Offering An Automated Dispensing Option!

- **HOW IT WORKS:** Simply select the volume desired, Press Start, and the pump will begin to dispense fluid and automatically shuts off when target is reached. Stores 5 different "cal" factors. Includes Dura pump, auto-batch meter, 1" x 5' suction hose, 1" x 12' discharge hose, 2" camlock & ball valve nozzle.



Part No.	Description	Net Ea.
DP ABS-6318E-12	Auto Batch, 12 Volt, EPDM Seals	\$ 1639.00
DP ABS-6318V-12	Auto Batch, 12 Volt, Viton® Seals	1698.00
DP ABS-6318E-110	Auto Batch, 115 Volt, EPDM Seals	1735.00
DP ABS-6318V-110	Auto Batch, 115 Volt, Viton® Seals	1769.00
DP ABS-EX10	10' Extension Cable to Mount Meter/ Controller Remotely from 12V Pump	106.00



Great shopping experience

"Great shopping experience, large selection of ag spraying products that I look for .. reasonable prices... Customer service has been helpful when needed..."

Jerry



DURA-AB™ 1" Auto-Batch Meter Only

Upgrade Your DURA-PUMP to an AUTO-BATCH System

Works with any Dura 12 volt or 115 volt pump. Preset control shuts off pump at desired volume. Includes 2 pin connector to directly connect to Dura pumps.



- 2-22 GPM
- Accuracy is ± 0.5%
- Backlit LCD Display with Timeout
- 40 PSI Pressure Rating
- Powered by (4) AAA Batteries & Strength Indicator
- 1" FPT Ports
- Gallons or Liters
- -10° F. to +130° F.
- 12V Model Has 30 Amp Internal Fuse
115V Model Has 3 Amp Internal Fuse

Part No.	Description	Net Ea.
DP AB-12E	AUTO-BATCH Meter, 12 Volt, EPDM.....	\$ 940.00
DP AB-12V	AUTO-BATCH Meter, 12 Volt, Viton®.....	915.00
DP AB-15E	AUTO-BATCH Meter, 115 Volt, EPDM.....	948.00
DP AB-15V	AUTO-BATCH Meter, 115 Volt, Viton®.....	925.00

2" & 3" DURA AUTO-BATCH™ HIGH-FLOW METERS

FAST. SIMPLE. SAFE.

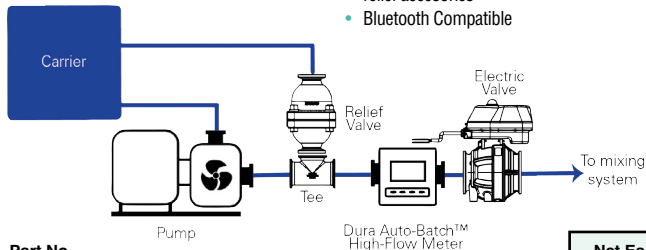


The *Dura Auto-Batch High-Flow Meter* is an automated meter for easy and efficient metering of fluids. Enter the amount you want transferred, turn on your transfer pump, and press Start. The meter will open an electric ball valve. When the pre-set amount is reached, the meter will automatically close the valve. An optional plumbing kit provides a relief valve to bypass fluid back to the source tank when the electric valve is closed.



2" & 3" High-Flow Auto-Batch™ Features

- Controls carrier flow using 12-volt DC electric ball valve (sold separately)
- Easily select manual or automatic
- Returns to last volume amount dispensed for easy repeatable batching
- Displays message when batch is completed; backlit display
- Optional relief valve plumbing kit
- Flanged 2" or 3" Valves available
- Intuitive menu-driven backlit display
- Accuracy +/- 0.5% with manual field calibration; (2) 9V batteries
- Full port with Banjo M220 or M300 flanges
- Works with many liquids
- 150 PSI rating; 32° F to 140° F
- 100% moisture-sealed circuitry
- Save up to five manual calibrations
- Option to display batch volume, total volume, and flow rate
- Volume displayed in Liters or Gallons
- Includes a 2-year Warranty & Maintenance Program
- 2" 40-300 GPM; 3" 80-700 GPM
- Complete kits include meter, 12V valve & press relief accessories
- Bluetooth Compatible



Part No.	Description	Net Ea.
DP AB-HFM2E	2" High Flow Auto-Batch Meter, EPDM.....	\$ 2316.00
DP AB-HFM2V	2" High Flow Auto-Batch Meter, Viton®.....	2316.00
DP AB-HFM2S	2" High Flow Auto-Batch Meter, Silicon.....	2316.00
DP AB-HFM3E	3" High Flow Auto-Batch Meter, EPDM.....	2779.00
DP AB-HFM3V	3" High Flow Auto-Batch Meter, Viton®.....	2778.00
DP AB-HFM3S	3" High Flow Auto-Batch Meter, Silicon.....	2778.00
DP AB-HFM2PRV	2" Relief Valve Plumbing Accessories	243.00
DP AB-HFM3PRV	3" Relief Valve Plumbing Accessories	336.00
DP EV220	2" Full Port Flanged Poly Valve, 12V.....	544.00
DP EV300	3" Full Port Flanged Poly Valve, 12V.....	816.00
DP AB-HFM2-KITV	2" Complete Kit, Viton®.....	3292.00
DP AB-HFM2-KITE	2" Complete Kit, EPDM.....	3292.00
DP AB-HFM3-KITV	3" Complete Kit, Viton®.....	4597.00
DP AB-HFM3-KITE	3" Complete Kit, EPDM.....	4597.00
DP ABHFM-PP	Bluetooth Compatible Faceplate Kit (For meters mfg in 2025 & earlier)	569.00

AG CHEMICAL MIXING SYSTEMS IN STOCK

The **Dultmeier Quick Chem-Mix System** offers a reliable and efficient solution for handling and mixing chemicals from mini-bulk containers without the need for multiple 12-Volt pumps or individual flow meters.

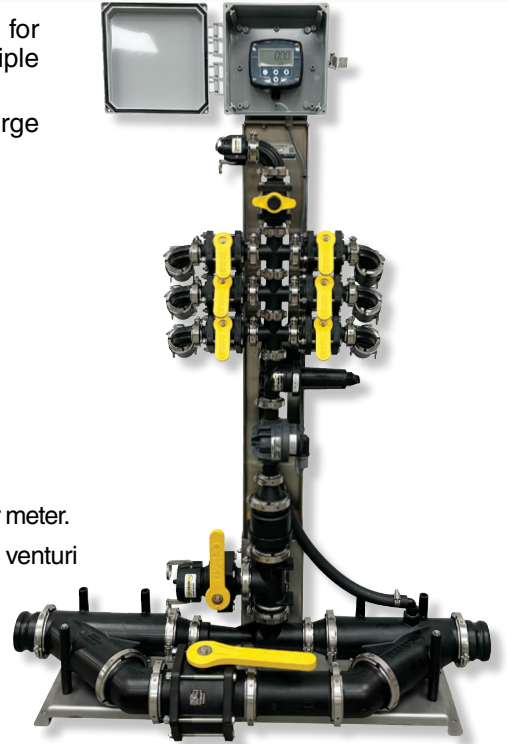
Available with or without a venturi assembly for use on either the suction or discharge side of your transfer pump.

Scan the QR code to learn more.

Learn More

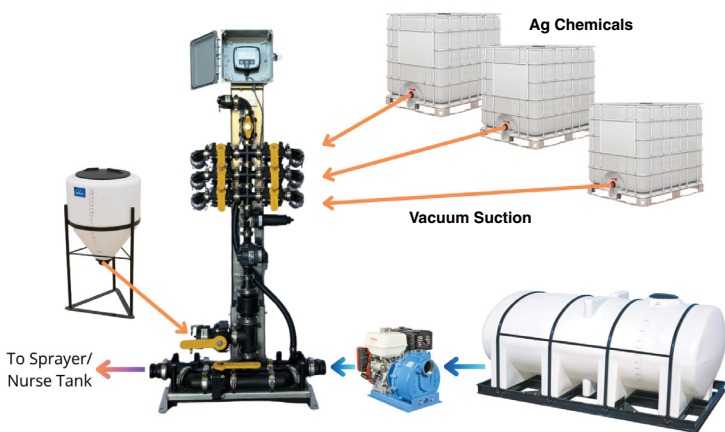


- **Single Meter for Multiple Chemicals:** Eliminate the need for recalibration with a single gear meter.
- **Powerful Suction:** Utilizes a centrifugal transfer pump to create a vacuum, either from a venturi or pump suction, for pulling chemicals from mini-bulk tanks.
- **Versatile Rinse:** Built-in rinsing ensures the entire manifold and hoses are flushed.
- **Durable Construction:** Features Banjo polypropylene flanged fittings.
- **Weatherproof Display:** A NEMA outdoor-rated enclosure protects the digital display.



Quick Chem-Mix with Venturi Inductor Assembly

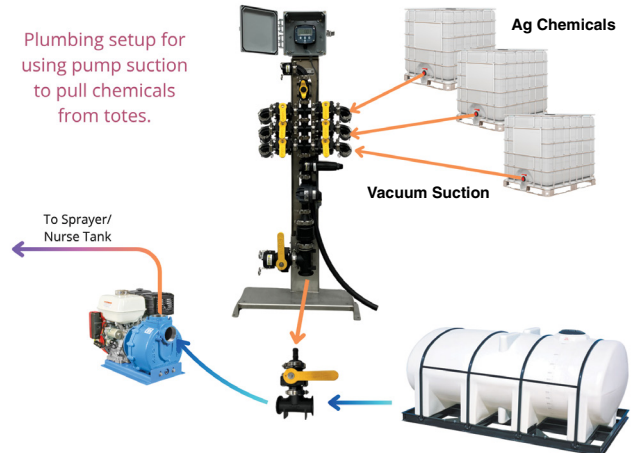
This setup is used on the discharge side of a centrifugal transfer pump. 2" systems require a 2" pump, and 3" systems require a 3" pump to work properly.



Part No.	Description	Net Ea.
DU CHEM-MIX2-4	3 Product Valves with 2" Venturi Manifold	\$ 3255.00
DU CHEM-MIX2-6	6 Product Valves with 2" Venturi Manifold	3510.00
DU CHEM-MIX3-4	6 Product Valves with 2" Venturi Manifold	3634.00
DU CHEM-MIX3-6	6 Product Valves w/ 3" Venturi Manifold	3830.00

Quick Chem-Mix Less Venturi

These systems are designed to be used with an existing cone-bottom tank with an inductor, or they can be used on the suction side of a centrifugal pump.



Part No.	Description	Net Ea.
DU CHEM-MIX2-4LV	3 Product Valves Less 2" Venturi Manifold	\$ 2746.00
DU CHEM-MIX2-6LV	6 Product Valves Less 2" Venturi Manifold	2923.00
DU CHEM-MIX3-4LV	6 Product Valves Less 2" Venturi Manifold	2790.00
DU CHEM-MIX3-6LV	6 Product Valves Less 3" Venturi Manifold	3014.00

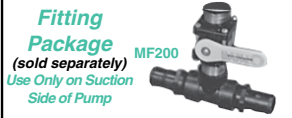
INDUCTOR SYSTEMS & TANKS IN STOCK

MIX-N-FIL Chemical Inductor Tanks

Polyethylene Mix-N-Fil Chemical Inductor Tanks have a 16" Lids, 2" FPT Bottom Outlet. 15, 30 and 55 gallon tanks have molded in gallonage marks in 1/2 gallon increments while the 85 gallon is marked in 5 gallon increments.

Chemicals are added to the liquid as it flows through the suction line.

Note: No 16" lids available for Model #110T. (12" Lid)



Ace Roto-Mold



Stands Sold Separately

Part No.	MIX-N-FILL Tanks & Stands	Dia. X Ht.	Wt.	Net Ea.
RT 15T	15 Gallon Inductor Tank.....	19" x 24"	12 lbs.	\$ 138.00
RT 15ST	Stand for 15 Gal. Inductor Tank	19" x 29"	15 lbs.	115.00
RT 30T	30 Gallon Inductor Tank.....	24" x 27"	17 lbs.	175.00
RT 60T	55 Gallon Inductor Tank.....	24" x 43"	24 lbs.	220.00
RT 30ST	Stand for 30 or 55 Gal. Inductor Tank....	24" x 33"	18 lbs.	117.00
RT 85T	85 Gallon Inductor Tank.....	30" x 43"	35 lbs.	321.00
RT 110T	110 Gallon Inductor Tank.....	30" x 51"	44 lbs.	336.00
RT 85ST	Stand for 85 & 110 Gal. Inductor Tank.....	30" x 36"	40 lbs.	211.00

Polyethylene Inductor Systems 15, 30, 55, 85 & 110 Gallon



15, 30, 55 & 85 Gallon Inductor Tanks feature Banjo polyethylene flange fittings. Includes a water flush and jug rinse wand with 16" fill lid (12" lid on 110 gallon), 2" or 3" manifold system. Unit is plumbed with bypass loop for induction control.

Note: All units shipped assembled as shown.

Part No.	Description	Net Ea.
DU 1A15	15 Gallon Inductor with 2" Manifold System	\$ 1098.00
DU 1A15A	15 Gallon Inductor with 3" Manifold System	1385.00
DU 1A30	30 Gallon Inductor with 2" Manifold System	1141.00
DU 1A30A	30 Gallon Inductor with 3" Manifold System	1413.00
DU 1A60	55 Gallon Inductor, with 2" Manifold System	1160.00
DU 1A85	85 Gallon Inductor with 2" Manifold System	1304.00
DU 1A85A	85 Gallon Inductor with 3" Manifold System	1585.00
DU 1A110A	110 Gallon Inductor with 3" Manifold System	1627.00

Chemical Jug Rinse System



Chem-Blade is a retrofit jug-splitting stainless knife system which opens chemical containers with speed and efficiency. Instead of operators using hand knives to remove caps and foil seals off containers, they simply bring the bottom of the jug down onto the blades splitting and emptying a 2.5 gallon jug in mere seconds. With water supplying the built in high pressure rotary rinse head, the containers are thoroughly rinsed leaving no chemical in the container, saving money as well as time. Testing showed an operator can spray 25 to 45 more acres per day with the time savings created by **Chem-Blade**. So, recouping the purchase investment is possible in just weeks depending on jug usage.

CHEM-BLADE
ORIGINAL

Part No.	Description	Net Ea.
CB 0016	Chemical Blade System	\$ 833.00
DU CB1	Internal Water Plumbing Kit for Chem-Blade *.....	22.50

* Terminates with 3/4" Poly Tank Fitting

Poly Inductor Systems with Chemblade

Part No.	Chem Blade Systems	Wt.	Net Ea.
DU 1A30-CB	30 Gallon Inductor with 2" Manifold, Includes "Chem Blade" Jug Rinse System.....	65 lbs.	\$ 1950.00
DU 1A30A-CB	30 Gallon Inductor with 3" Manifold System Includes "Chem Blade" Jug Rinse System	70 lbs.	2147.00
DU 1A60-CB	55 Gallon Inductor with 2" Manifold, Includes "Chem Blade" Jug Rinse System.....	65 lbs.	1977.00
DU 1A60A-CB	55 Gallon Inductor with 3" Manifold System Includes "Chem Blade" Jug Rinse System	70 lbs.	2231.00
DU 1A85-CB	85 Gallon Inductor with 2" Manifold, Includes "Chem Blade" Jug Rinse System.....	65 lbs.	2115.00
DU 1A85A-CB	85 Gallon Inductor with 3" Manifold System Includes "Chem Blade" Jug Rinse System	70 lbs.	2400.00

Vertical & Cone Bottom Storage Tanks

Ace Roto-Mold

STI SNYDER INDUSTRIES, INC.

NORWESCO

10 to 20,000
Gallon
Options



Call for availability

Standard & Heavy Duty
Designs Available
Variety of Colors

Ace Roto-Mold

Horizontal Elliptical Tanks

FS3250-88-BLK Shown On Optional Skid

Features: Free-standing elliptical tanks rated to 14 Lb./Gal. UV protected polyethylene construction with poly baffle and gallonage markers molded-in on one side and both ends. Black powder-coated steel support hoops and optional skids. Tanks have a 3" HD outlet fitting with siphon opposite an 18" lid.



TANKS - Less Hoops

Part No.	Gallon	Fillwell	Width	Height	Length	Outlet	Wt.	Net Ea.
RT FS3250-88	3250	16"	88"	79"	146"	3"	1208 lbs.	\$ 5650.00
RT FS3250-88-BLK	3250**	16"	88"	79"	146"	3"	1208 lbs.	5790.00

** Black Tank

Steel Hoops for Above Tanks (Required):

Part No.	Description	Net Ea.
RT FS3250-HP	1 Set of (4) 1-1/4" Steel Hoops with "feet" for FS3250-88 ..	\$ 1324.00

Steel Skid for Above Tanks (Optional):

Part No.	Description	Wt.	Net Ea.
RT FS23-32SK	Skid for FS2350 - 4250 Gallon Tanks, 90" x 146"	1078 lbs.	\$ 3018.00

Call for Pricing & Freight

Mix-A-Tote™

IBC Tote Mixer

The **Mix-A-Tote™ Agitation System** is designed for safe, convenient mixing in IBC storage totes. This IBC tote mixer remixes settled or separated liquids and suspended solids and can also be used to blend custom mixtures in a tote before transfer to other systems. No brackets or auxiliary attach points are needed – the mixer installs directly through the tote's threaded lid opening. A multi-impeller design creates "up-pumping" agitation, eliminating vortexing and creating an "enveloping effect" for rigorous mixing. **Fits all standard IBC totes with a 6" lid.**

Features:

- 3/4 HP single or three phase electric motor
- 24" Long cord with grounded plug on 1 PH model
- Conveniently placed toggle switch with reversible rotation control
- Easy-to-attach, direct-mount IBC lid adapter
- No brackets required – ergonomic handles for easy transfer between totes
- All 300 series stainless steel metal components
- Proven multi-impeller agitator design

Part No.	Description	Net Ea.
CX MAT-1PH	1-Phase Mix-A-Tote	\$ 1564.00
CX MAT-3PH	3-Phase Mix-A-Tote	1640.00
CX MAT-SHAFT	Replacement Shaft	559.00
CX MAT-WB	Wall Mount Storage Bracket	96.10



FUEL/DEF EQUIPMENT IN STOCK

Fuel Storage Tanks

Tanks Only or Complete Systems

Features:

- Three 2" top openings, plus 1-1/2" rotary gauge port & 2" drain in end
- Full-length skids
- Red enamel finish (White available)
- NOT UL listed



Part No.	Capacity	Size	Gauge	Wt.	Net Ea.
HS 1520-50	520 Gallon	50" x 61"	14	350 lbs.	\$ 1498.00
HS 11000-64	1000 Gallon	64" x 72"	12	850 lbs.	2540.00

Other Sizes & UL Listed Double Wall Tanks Available

Piusi Portable DEF Tank Package

Standard Features:

- 58 Gallon Capacity
- SB325 DEF Automatic Nozzle
- 12V DC DEF Pump
- 13 Ft Discharge Hose
- 6.5 Ft Pump Power Cables with Clamps
- Lockable Lid
- Pallet Jack Base for Easy Loading or Unloading
- 9 GPM Pump
- 20 Min Duty Cycle
- Inlet is 2" BSP

PPT58



Part No.	Description	Net Ea.
PU PPT58	Portable DEF Tank Pkg, 58 Gal, 12V, 9GPM.....	Call



Fuel Filters

Cimtek Fuel Filters remove water and foreign material from fuel before it enters the tank. All-metal construction with spin-on FPT connections designed to handle gasolines and diesel fuels across a wide range of flow rates. Ideal for general purpose farm, construction, and mobile fueling applications, as well as high-volume fueling applications. Hydrosorb elements have water filtration to completely remove water and impurities from fuel. Filter heads sold separately.



Part No.	Filter Connection	Max GPM	Std. Pkg.	Net Ea.	
CI 200E-30	30 Micron Element.....	3/4"	18	6	\$ 13.60
CI 260AHS10II	10M Hydrosorb Element...	1"	18	12	22.30
CI 260AHS30II	30M Hydrosorb Element...	1"	18	12	22.70
CI 200AH	CI Head for 1" Filters, 1" FPT Ports				23.50
CI 200H-1	CI Head for 3/4" Filters, 1" FPT Ports				20.60
CI 400-30	30 Micron Element.....	1"	25	12	12.70
CI 400-1	1" Alum Head for 400 Filters				32.00
CI 800-30	30 Micron Element.....	1"	40	6	29.00
CI 800HS-10II	10M Hydrosorb Element...	1"	40		38.25
CI 805	Alum Head for 800 Series				32.50

10% Discount on Standard Pkgs. of Elements - Not Assorted

FILL-RITE Heavy-Duty Fuel Pumps

2 Year Warranty

12 Volt

Heavy Duty 12-Volt Fuel Pumps with hose, manual or auto nozzle, suction pipe, and power cable. Models from 15-25 GPM. Less meter.



Model NX25-12V

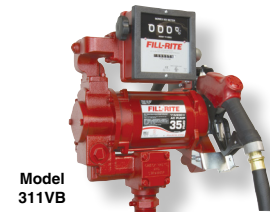
Part No.	Net Ea.
FR 1210 15 Gpm Pump, 12' Hose & Man. Nozzle	\$ 542.00
FR FR4210 20 Gpm Pump, 12' Hose & Man. Nozzle	638.00
FR NX25-12V 25 Gpm Pump, 18' Hose & Auto Nozzle	1502.00



Model 700

Heavy Duty 115-Volt Fuel Pump with 12 ft. of hose & manual nozzle. 20 GPM. Less meter.

Part No.	Net Ea.
FR FR700 Pump, Less Meter	\$ 853.00
FR FR701 Pump with Meter	1082.00



Model 311VB

Heavy Duty 115-Volt Fuel Pump with meter, 18 ft. of hose & automatic nozzle. 35 GPM.

Part No.	Net Ea.
FR 310VB Pump, Less Meter	\$ 1692.00
FR FR311VB Pump with Meter	2136.00

FILL-RITE Automatic Fuel Nozzles

UL/cUL Listed

Standard-Duty Fuel Nozzles with automatic shutoff. Rugged design for long-lasting performance during continued use. Color coding and differing spout diameters prevent cross fueling.



Part No.	Inlet	Style	Color	Spout	GPM	Net Ea.
FR SDN075R	3/4"	Unleaded	Red	13/16"	14.5	\$ 86.50
FR SDN075G	3/4"	Diesel	Green	15/16"	14.5	86.00
FR SDN100G	1"	Diesel	Green	1-1/8"	25	129.00

DEF Pump Only

Part No.	Description	Net Ea.
PJ 33102	DEF Self Priming Pump, 12 VDC, 8 GPM.....	\$ 562.00



Husky EagleFlex®

Fuel Hose Assemblies

Ask About Quantity Discounts!



Part No.	Length	I.D.	Couplings	Net Ea.
GD L64-3/4X10	10'	3/4"	3/4" MPT	\$ 48.50
HK FT12S14	14'	3/4"	3/4" MPT	67.50
HK FT12S20	20'	3/4"	3/4" MPT	90.50
GD L64-1X10	10'	1"	1" MPT	70.00
GD L64-1x12	12'	1"	1" MPT	81.00
HK FT16S14	14'	1"	1" MPT	100.00
HK FT16S20	20'	1"	1" MPT	120.00

High Volume Diesel Transfer Pump Units



- Includes MP Petrolmaxx 2" x 2" Self-Priming Pump (Cast Iron with Viton® Seal)
- 5.7 HP CRX Engine, Manual or Electric Start
- 165 GPM @ 20 PSI (60 GPM thru 35' of 1-1/2" hose, 1-1/2" Double Filter & 1-1/2" Automatic Nozzle)

Part No.	Net Ea.
DU MP25PCRX 2" CI Petrolmaxx Pump, 5.7 HP CRX Engine, Manual Start.....	\$ 1132.00
DU MP25PCRXE Same as Above with Electric Start.....	1289.00

Hi-Speed Diesel Nozzles

NON-UL



- Rugged with full grip nozzle guard and trigger cover to take rough-handling.
- Has flow-stop with vital parts composed of stainless steel.

Part No.	Nozzles	Style	Guard Color	Inlet	Spout	GPM	Net Ea.
HK 33C	Farm	Diesel	Green	3/4" FPT	15/16"	18	\$ 111.00
HK 45C	Farm	Diesel	Green	1" FPT	15/16"	18	139.00
HK 45CU	Farm	Unleaded	Red	1" FPT	13/16"	15	138.00
HK 45CHF	Farm	Diesel	Green	1" FPT	1-1/8"	20	126.00

FUEL UNITS IN STOCK

HIGH-FLOW DIESEL TRANSFER UNITS

High-Flow Engine Drive Diesel Transfer Units

These rugged units are designed for high volume diesel transfer so you can fill equipment quickly and save valuable time.

Powered with gas-engine driven centrifugal pumps. These are ideal for fuel trailers. Available in 1" systems with **32 GPM** flow rate and 1-1/2" systems with **60 GPM** flow rate. These are discharge flow rates at the nozzle, even when pumping fuel to fill combines and heavy equipment.

Free Freight



1" Systems – 30 GPM

Features:

- Cimtek 60 GPM fuel filter with 30 micron Hydrosorb elements
- 35' of 1-1/2" fuel transfer hose
- High flow automatic nozzle
- Steel base plates (powder-coat finish)
- Hannay spring rewind hose reel with hose stop
- Hose end swivel

Units in Stock:

Part No.	Description	Net Ea.
DU FPU1P	1" x 35 ft. Hose, 32 GPM Flowrate	\$ 4173.00
DU FPU1.5P	1-1/2" x 35 ft. Hose, 60 GPM Flowrate	6174.00

All systems are assembled in Omaha, NE, and the freight cost is covered to anywhere in the US (excluding Alaska & Hawaii). Designed for diesel fuel and biodiesel up to B20.

* Engines are recoil/pull start but units can be built with 12-Volt electric start engines upon request.

Free Freight



1-1/2" Systems – 60 GPM

High-Flow Electric Motor-Driven Diesel Transfer Units

The same systems above can be built with electric motors instead of gas engines. All the same features but with 3 HP single or three phase motors for stationary fueling applications.

Built to Order:

Part No.	Description	Net Ea.
DU FPU1-M1	1" x 35 ft. Hose, 32 GPM Flowrate	\$ 5316.00
DU FPU1.5-M1	1-1/2" x 35 ft. Hose, 60 GPM Flowrate	7174.00

Free Freight



High-Volume Fuel Components



1000 1" 3000 1-1/2" 4000 2"

No.	Elements	Ports	Flow	Filtration	Size
1000	1	1"	30 GPM	2,10, 30 Microns	14H x 5
3000	2	1-1/2"	60 GPM	2,10, 30 Microns	14H x 10
4000	3	2"	90 GPM	2,10, 30 Microns	15H x 10

Centurion Filter Housing Less Element

Part No.			GPM	Inlet & Outlet	Net Ea.
CI 1000	Centurion I	Housing.....	30	1"	\$ 180.00
CI 3000	Centurion III	Housing.....	60	1-1/2"	421.00
CI 4000	Centurion IV	Housing.....	90	2"	602.00

Elements for Centurion Housing

Part No.			Std. Pkg.	Net Ea.
CI E10	10	Micron Element.....	6	\$ 21.40
CI EHS10II	10	Micron Hydrosorb Element.....	6	33.50
CI E30	30	Micron Element.....	6	20.60
CI EHS30II	30	Micron Hydrosorb Element.....	6	36.00

10% Discount on Standard Pkgs. of Elements - Not Assorted



Top Grade Fuel Hoses; 200 PSI Rating; Brass Crimped Ends. Flexible to -20° F.



OPW 1-1/2" Automatic Nozzle. 60 GPM @ 17 PSI.

Fitted Hose

Part No.		I.D.	Length	Wt.	Net Ea.
GA 3221WM-1x35	Fuel Hose Assembly	1"	35'	25 lbs.	\$ 433.00
GA 3221WM-1x50	Fuel Hose Assembly	1"	50'	33 lbs.	595.00
GA 3221WM-1-1/2x20	Fuel Hose Assembly	1-1/2"	20'	23 lbs.	480.00
GA 3221WM-1-1/2x25	Fuel Hose Assembly	1-1/2"	25'	28 lbs.	564.00
GA 3221WM-1-1/2x35	Fuel Hose Assembly	1-1/2"	35'	33 lbs.	691.00
HK 1690	Nozzle, 1-1/2", 100 GPM Flow Rate				586.00



Box 45565
Omaha, Nebraska 68145-0565



Or Current Resident

PRSR STD
U.S. POSTAGE
PAID
OMAHA, NE
PERMIT NO. 314

OMAHA, NEBRASKA
13808 Industrial Road
Omaha, NE 68137

TOLL-FREE 1-800-228-9666
LOCAL 1-402-333-1444
FAX No. 1-402-333-5546
E-MAIL dultmeier@dultmeier.com

DAVENPORT, IOWA
601 West 76th Street
Davenport, IA 52806

TOLL-FREE 1-800-553-6975
LOCAL 1-563-386-0930
FAX No. 1-563-386-5448
E-MAIL dultmeier@dultmeier.com



© Dultmeier Sales 2026



2026 SPRING SPRAYING EQUIPMENT

Limited Quantities Available On Some Items - Prices Subject to Change Without Notice

4/26

Over 10,000
Different
items in
stock

2-8 Spray Nozzles & Accessories

11-16 Banjo Valves, Fittings & Strainers

Wholesale
Prices

9 Sprayer & Transfer Pumps

21 Tanks

Same Day
Shipping

10 12V Sprayer Valves

18-23 Mini-Bulk Pumps & Fuel Equipment