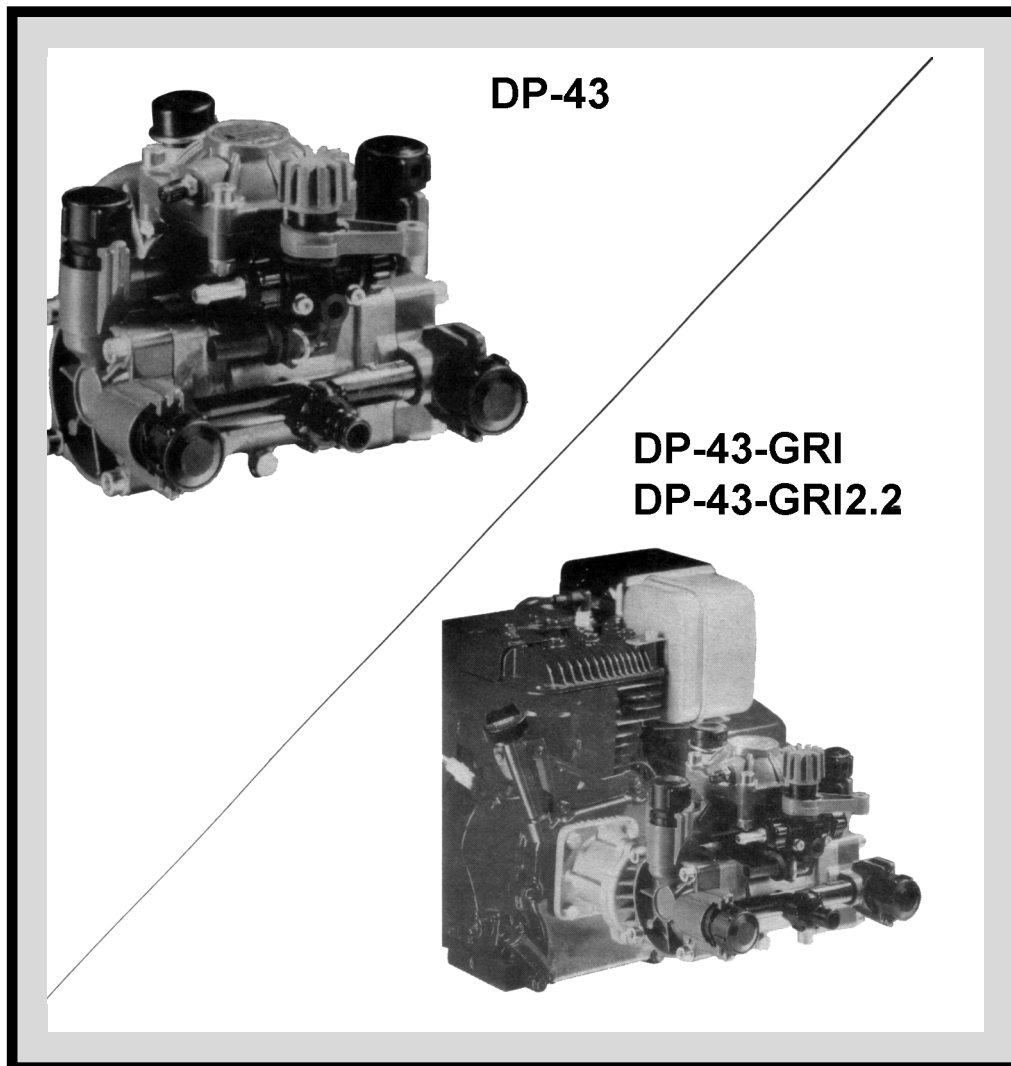


**DP-43, DP-43-FP, DP-43-GRI, DP-43-GRI2.2,
DP-43-GRIP2.2, DP-43-GRP, DP-43-GRPC, DP-43-P**

**DIAPHRAGM PUMPS
Parts & Instruction Manual**



Price \$10.00

CDS-JOHN BLUE COMPANY

DIVISION OF ADVANCED SYSTEMS TECHNOLOGY, INC.

290 Pinehurst Drive • Huntsville, Alabama 35806

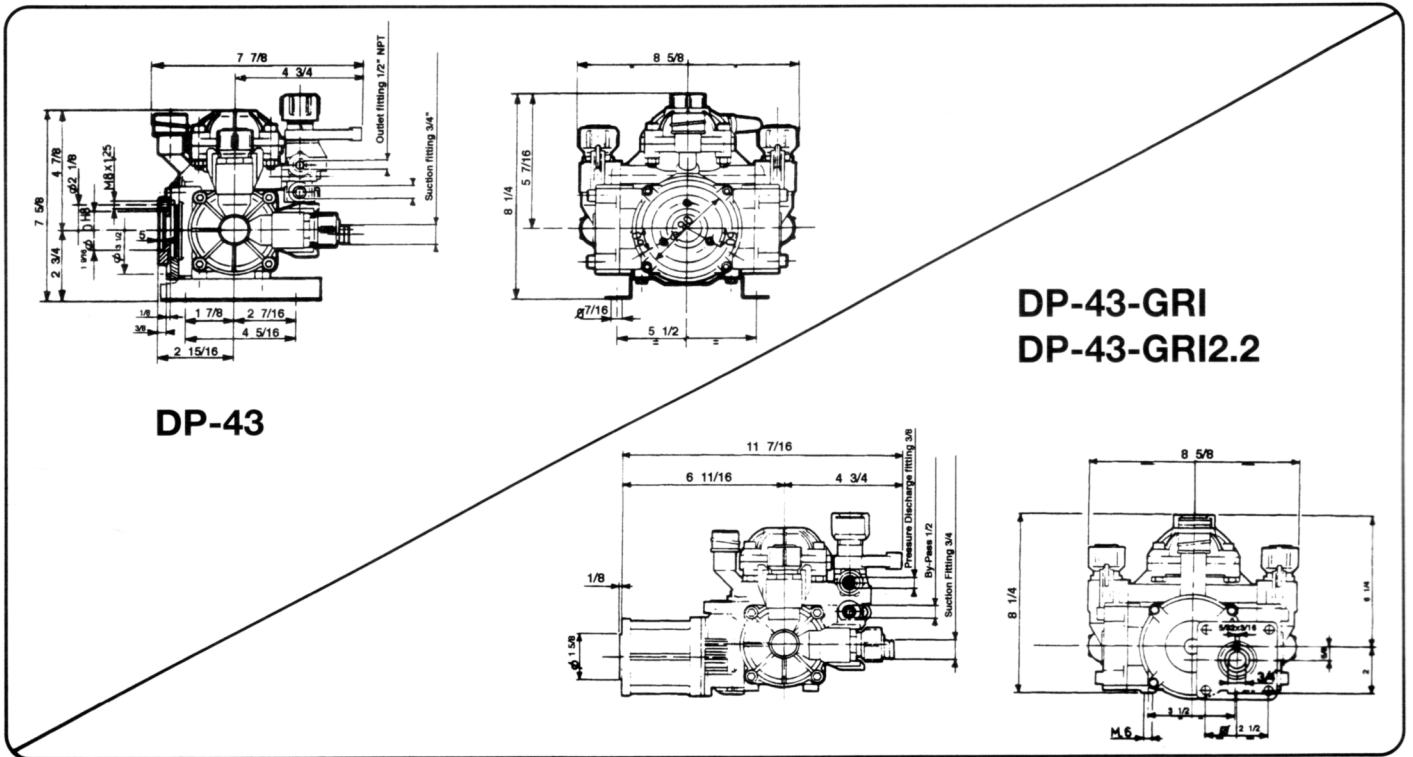
P. O. Box 1607 • Huntsville, Alabama 35807

Telephone: (256) 721-9090 • FAX (256) 721-9091 • Call Toll Free: 1-800-253-2583

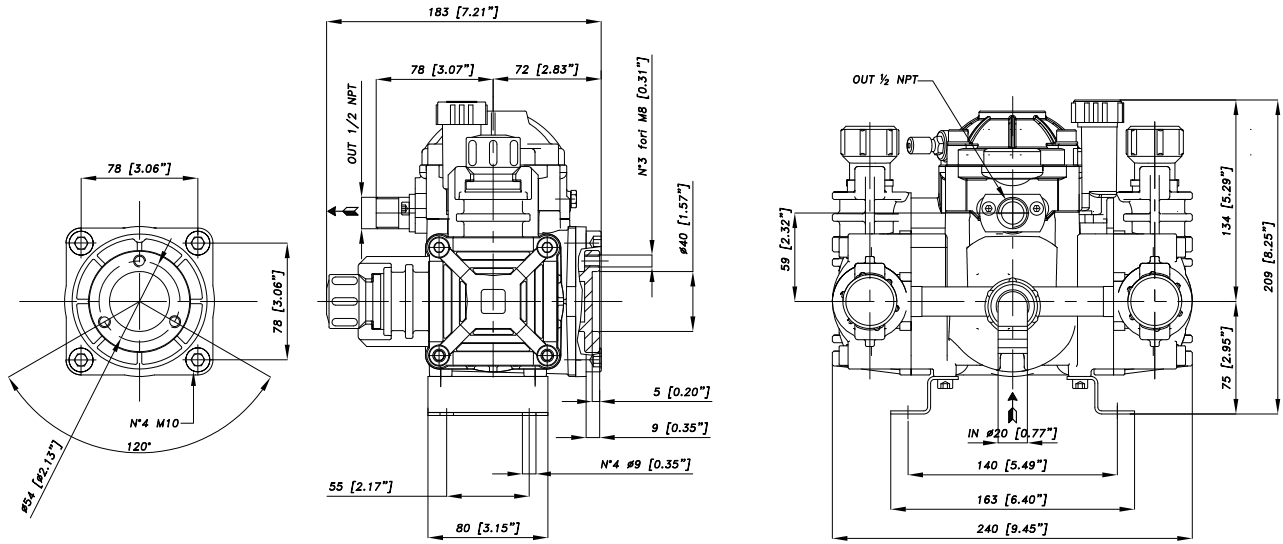
TABLE OF CONTENTS

PUMP DIMENSIONS	2-3
NOTES TO THE OWNER	4
SELECTION OF PUMP AND EQUIPMENT DESIGN	4
SAFETY PRECAUTIONS	4-5
WARNING	5
INSTALLATION SCHEME	6
ORDINARY MAINTENANCE FOR DIAPHRAGM PUMPS	7-8
ORIGINAL SPARE PARTS	9
PRESSURE REGULATOR OPERATING INSTRUCTIONS	10
CHEMICAL RESISTANCE CHART	10
PARTS LIST AND DRAWINGS	11-24
TROUBLES AND CURES REFERENCE CHART	BACK COVER
WARRANTY	BACK COVER

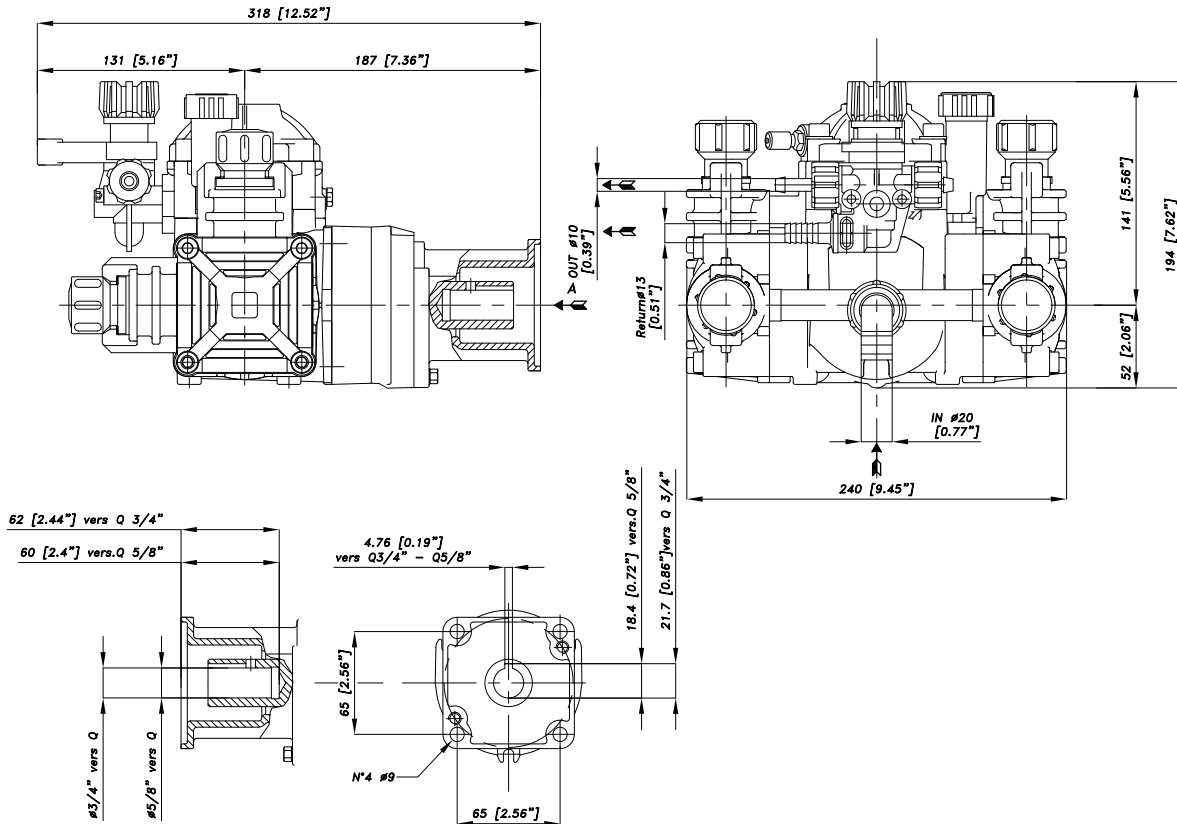
DP-43 and DP-43-GRI PUMP DIMENSIONS



DP-43-P PUMP DIMENSIONS



DP-43-GRIP & DP-43-GRIP2.2 PUMP DIMENSIONS



NOTES TO THE OWNER

Thank you for purchasing a CDS-John Blue diaphragm pump. These pumps are equipped with mechanical diaphragms. They are manufactured with materials that make them suitable for weed control, liquid fertilizer, spraying and washing. A complete system with accessories is easily adapted to tractors, sprayers and boom sprayers, electric motors and gasoline/diesel engines.

This manual has been prepared and illustrated to assist you in the maintenance of your CDS-John Blue Diaphragm Pump. Enter your serial number and date of purchase for the diaphragm pump in the space provided below for ordering parts and service information.

Because our engineering department is constantly improving products, we reserve the right to make design and specification changes without notice.

Serial No. _____ Purchase Date _____

SELECTION OF PUMP AND EQUIPMENT DESIGN

With regard to safety, all pumps meet the regulations in effect at publishing time. Choose the pump type carefully, according to the kind of liquid used and to the technical specifications (output, pressure) needed. If there are any questions about which pump type should be used, please contact our Technical Department.

CDS-John Blue diaphragm pumps are designed and manufactured with materials that are compatible with water. They are also compatible with most pesticides and herbicides currently on the market in the concentration recommended by the manufacturer. Use only pump liquid that is compatible with the pump component materials. Failure to follow this warning can result in injury and/or property damage.

The technical specifications of each pump (RPM, output, pressure) are shown on the label attached to the pump. For more information, refer to our Technical Department at 1-800-253-2583.

Carefully evaluate which pump model series to use. Using the correct pump type and size for the operation system can prevent possible bodily injury. Also use similar care when selecting the electric, gasoline/diesel motors or driven systems so they conform to the recommended performance to prevent personal injury and environment damage. Finally, it is important to be cautious during the design and construction of the equipment to prevent bodily injury, coming not from the pump, but from the design, construction or improper use of equipment.

A certified electrician should be used when wiring an electrically driven pump.

SAFETY PRECAUTIONS

GENERAL

- Do not operate equipment until you read and understand Operators Manual.
- Carry a first aid kit and five (5) gallons of clean water to flush contaminated skin and eyes.
- Agricultural chemicals can be dangerous. Improper selection or application can injure persons, animals, plants, soils or other property. Follow label from chemical manufacturer.
- Always wear eye protection and protective clothing when in the area of spray pump and/or control.
- In addition to the pressure regulator, use the proper safety relief valve in the plumbing after the pump.
- Before each use, make certain that all connections are tight and secure.
- Disconnect power before servicing.
- Do not pump flammable/combustible fluids.
- Do not operate pump above recommended rpm.
- Provide adequate protection in guarding around the moving parts such as the shaft and the pulley.
- Stop pump and release all pressure within the system before servicing any component.
- Do not operate pump above 145°F (62°C) liquid temperature.

WARNING: Use of this product for any purposes other than its original intent, abuse of the product, and/or modification to the original product is strictly prohibited by CDS-John Blue Company. CDS-John Blue Company reserves the right to deny warranty or liability claims in any/all situations involving misuse, abuse or modification.

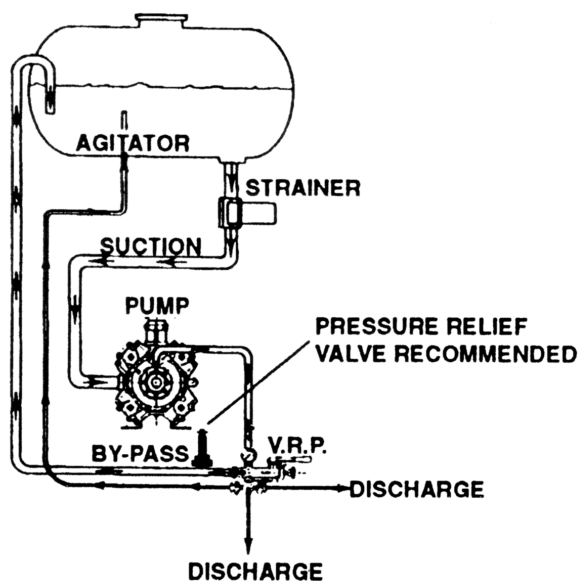
The original intent of this product does NOT include use where the maximum allowed speed, pressure, or temperature is exceeded, and it does NOT include applications utilizing fluids that are not compatible with the product's component materials. Do not use this product with flammable or combustible fluids such as gasoline, kerosene, diesel, etc., and do not use in explosive atmospheres. Failure to follow this notice may result in serious injury and/or property damage and will void the product warranty. If in doubt about your application, contact your stocking dealer or the CDS-John Blue technical staff at 1-800-253-2583.

OPERATIONAL

- Equipment should be operated only by trained, responsible people.
- Do not allow anyone but operator on equipment.
- Wear safety goggles and/or respirator when operating applicator.
- Do not attempt any service or disassembly without stopping machine and releasing all pressure from system.
- Do not operate equipment with shields removed.
- Make a visual inspection of all hose and fittings for soundness on a scheduled basis.
- Replace anything which appears questionable.

INSTALLATION

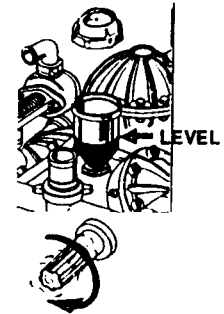
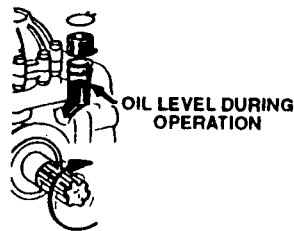
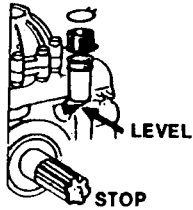
1. Pump should be installed perfectly lined up with the driven gears (pulleys, gear boxes, overgears, etc.).
2. Attach the pump to a strong base plate and anchor it with bolts sufficiently strong enough to hold it in place.
3. Proper selection of type and hose size is vital to good performance.
 - Diameter of suction, discharge and by-pass hoses should be at least that of the pump hose barb or greater.
 - Use only hoses rated for maximum pressure rating of the pump.
4. Use suction line of spiral steel wire braid reinforced suction hose to prevent collapse. Use good quality hose clamps and tighten securely.
5. Use only components (hose fittings, clamps, etc.) rated for maximum pressure rating of the pump.
6. Failure to follow the above information can result in malfunctions of the pump and will void the product warranty.



INSTALLATION SCHEME

CHECKS TO MAKE BEFORE USING THE PUMP

- With the pump not running, check to make sure that the oil level is correct. Add oil, if needed, taking care not to exceed the indicated level. Repeat with pump running. See “Oil Change” on page 7.



- Check to make sure the inlet and discharge hoses are not crimped. Also make sure the strainer is clean.
- Prevent any hose restrictions and be sure connections are tight to prevent air entering, since these conditions will compromise pump performance.
- If pumping from a tank, check to make sure that the control unit by-pass line is not too close to the inlet line. Make sure that it does not create turbulence inside the tank.
- Turn the pressure adjustment lever to the by-pass position when starting the pump.
- The pulsation dampener on the pump or on the pressure line is generally charged at 80-120 psi, the recommended pressure rating for the pump.
- For different working pressures, set the pressure of the pulsation dampener as follows:

WORKING PRESSURE

300 - 700 psi
150 - 300 psi
70 - 150 psi

PULSATION DAMPENER PRESSURE

80 - 120 psi
70 - 80 psi
15 - 70 psi

Note: As a general rule, set the pulsation dampener to 1/3 the working pressure without exceeding 100 psi. Also, with the pump not running, check the pressure with a pressure gauge. It is a good practice to inspect the pulsation dampener diaphragm at regular intervals.

SUCTION HEAD

Do not use pump for filling the tank. The hydroinjector, with a proper nozzle, can be used for this purpose. Avoid suction head higher than approximately 10 ft. and use the correct length for hoses, without elbow runs, better if pre-charged. In this case some problems may occur with the pump diaphragms.

OPERATING INSTRUCTIONS

- When starting pump, turn the valve lever to the dump position (by-pass) to facilitate priming. Once the pump is primed, turn the valve lever to the “PRESS” position and adjust the working pressure with the knob: turning knob clockwise will increase pressure, turning knob counterclockwise will decrease pressure.
- Operating pump above recommended rpm will not improve performance, but may damage the pump. Operation at rpm higher than specification voids all warranties.
- Be sure that the oil level is not above the maximum level with the pump running with pressure.

AFTER USE

After use, in order to prevent damage, flush the pump and let it operate a few minutes at working pressure with a solution that will neutralize the liquid last pumped (refer to that manufacturer’s instructions). Afterward empty the pump, so that the pressure drops to zero (“0”), and then let the pump run without liquids for two minutes.

To protect pump from freezing, flush pump per instructions above (after use) and then flush with straight RV-antifreeze. Empty the pump per the instructions above.

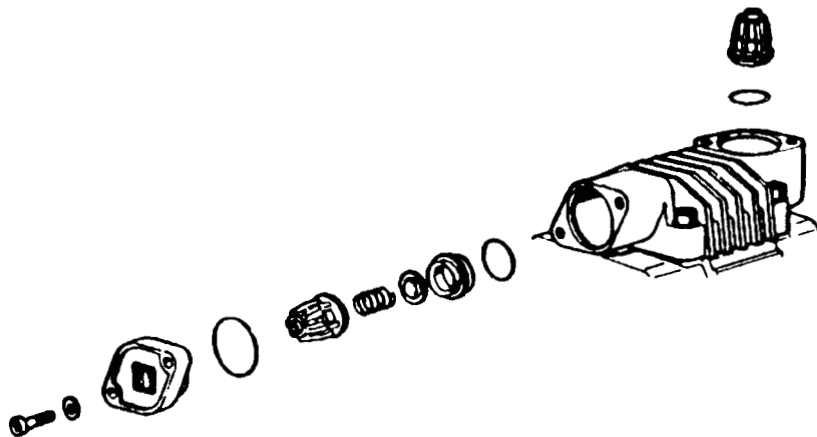
ORDINARY MAINTENANCE FOR DIAPHRAGM PUMPS

Routine maintenance on the pump includes changing the diaphragms, oil, valve assembly and o-rings, all of which are normal wear parts.

VALVE ASSEMBLY AND O-RING REPLACEMENT

Occasionally, debris can cause the valves to not seat properly or damage o-rings. To check for this problem please follow these steps:

1. Remove the valve cover (or the manifold) and remove the valves, check for debris and wear. Also check o-rings.
2. Replace necessary parts and reassemble.
3. Repeat for all valves. Consult the parts list for the corresponding valve kit or o-ring kit part number.



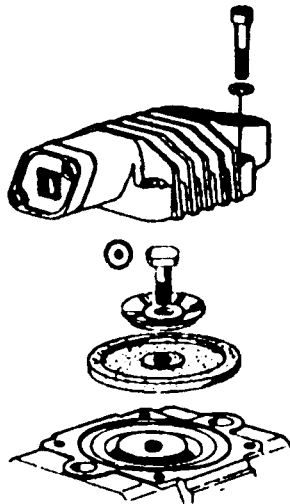
DIAPHRAGM REPLACEMENT

1. Remove the pump heads one by one.
2. Use a wrench to remove the diaphragm bolt, diaphragm and support washer.
3. If you removed the piston sleeves, replace them one at a time in their previous position. It is a good idea to mark them as they are removed.
4. Insert the new diaphragm on the piston and install it with its bolt. Use these tightening torques:

			Diaphragm Bolt Size	Torque
M 6 x 1	=	5 N.m.	6 mm	44 inch-pounds
M 8 x 1,25	=	12 N.m.	8 mm	106 inch-pounds
M 10 x 1,25	=	25 N.m.	10 mm	221 inch-pounds

The diaphragms should be replaced with the piston at its bottom and the edges inserted perfectly into the groove all the way around.

5. Replace the heads and attach them with their bolts.
6. Refill pump with oil through the reservoir and rotate the shaft to distribute oil and fill to proper level. Repeat all the checks described above in the section "Checks to make before using the pump."
7. Check the oil level with the pump running and without pressure until all air bubbles have been vented. Close the cap on the oil sight tube after the air has been completely emptied.
8. After the first inspection of the oil level as above, check the oil level again with the pump running with pressure.



OIL CHANGE:

Change oil after 500 hours as follows:

1. Remove the tank plug and the drain plug.
2. Rotate the shaft until the oil stops flowing.
3. Wash inside parts with diesel oil.
4. Put the drain plug and pour oil (SAE 30) slowly into sight tube while turning the pump shaft.
5. Start the pump at zero ("0") pressure for a few minutes to allow the correct lubrication of inside parts.
6. While the pump is operating, check the oil level inside the reservoir.
7. If necessary, fill oil to proper level.

WARNING: Too much oil causes pressure into the crankcase and this can result in leakage or diaphragm failures.

For pumps without the drain plug, it is not necessary to periodically change the oil. However, the oil should be changed when replacing diaphragms.

COUPLING TO AGRICULTURAL MACHINERY

1. Check that the PTO of the machine does not exceed the maximum rpm shown on the pump plate.
2. Synchronized the PTO with the motor speed, consult the service manual to get the gear number and rpm corresponding to the maximum pump rotation speed.
3. When the rpm of the PTO is higher than the maximum speed, use the suggested reduction gear.
4. Disconnect PTO when moving pump out of service. If that is impossible, then disengagement should be provided.

COUPLING TO ELECTRIC MOTORS AND GASOLINE ENGINES

For direct coupling always use the suggested reduction gear.

For coupling with pulley, check alignment of the two pulleys.

$$\text{Maximum Transmission Ratio} \frac{\text{Motor RPM}}{\text{Max Pump RPM}} = K$$

After determining K, you can establish the motor or pump pulley diameter:

$$\text{Motor Pulley Pitch Diameter} = \frac{\text{Pump Pulley Pitch Diameter}}{\text{Pump RPM}} = K$$

$$\text{Pump Pulley Pitch Diameter} = \text{Motor Pulley Pitch Diameter} \times K$$

WARNING: All wiring should be done by a qualified electrician.

WARNING: Do not handle a pump or pump motor with wet hands or when standing on a wet damp surface, or in water.

For special installation or application consult our Technical Department for the necessary modifications.

ORIGINAL SPARE PARTS

Only use original spare parts, otherwise warranty will be declined.

Always enter the serial number printed on the pump label.

When ordering parts, please specify the following:

- pump model
- part number
- description
- quantity
- means of shipment

PRESSURE REGULATOR OPERATING INSTRUCTIONS

Before starting, turn the valve lever counterclockwise to the dump position (by-pass flow). Failure to follow this will void the warranty on the pump.

Turn the adjustment knob counterclockwise to decrease the pressure to zero ("0") psi. In the initial start-up, this is absolutely recommended.

When the valve is in the by-pass line, start the unit and let it run for at least two (2) minutes or until oil is displaced in the cylinder and air is evacuated from circuit.

Turn the valve lever clockwise to pressure position, close the spray gun or spray boom. Turn the adjustment knob clockwise to achieve operating pressure. Then open the spray gun or spray boom.

CHEMICAL RESISTANCE CHART

The recommendations in the chart below are based upon information from material suppliers and careful examination of available published information and are believed to be accurate. The resistance of metals, plastics and elastomers may be affected by concentration, temperature, presence of other chemicals and other factors. This information should be considered as a general guide rather than an unqualified guarantee. All recommendations assume ambient temperatures unless otherwise noted. The ratings for these materials are based upon the chemical resistance only.

Material	Viton	Buna N (Nitrile)
Acetaldehyde	A	B
Acetamide	A	A
Acetate Solv ²	D	D
Acetic Acid, Glacial	D	D
Acetic Acid 20%	D	C
Acetic Acid 80%	D	C
Acetic Acid	C	C
Acetic Anhydride	D	A

Material	Viton	Buna N (Nitrile)
Acetone	D	D
Acetylene ²	A	A
Acrylonitrile	C	D
Alcohols Amyl	A	A
Benzyl	A	D
Butyl	A	A
Diacelone ²	D	D

Material	Viton	Buna N (Nitrile)
Ethyl	A	A
Hezyl	A	A
isobutyl	A	C
Isopropyl	A	C
Methyl	C	B
Octyl	A	B
Propyl	A	A

A = Acceptable, No effect
 B = Acceptable, Minor effect
 C = Questionable, Moderate effect
 D = Not Recommended, Severe effect

1

DIAPHRAGM PUMP MODEL DP-43 PARTS LIST

❖ Pump Repair Kit Order DP-94989097

* Valve Kit Order DP-94989197

ITEM	PART NUMBER	DESCRIPTION	QTY.
1	DP-94000109	CRANKCASE	1
2	DP-94004776	CONNECTING ROD RING	2
3	DP-94000809	CONNECTING ROD	2
4	DP-94001708	PISTON D.42	2
5	DP-85200400	CONNECTING ROD PIN	2
6	DP-80000300	RETAINING RING	4
7	DP-94000701	PISTON SLEEVE	2
❖ 8	DP-94004031	PISTON DIAPHRAGM	2
8	DP-94004033	PISTON DIAPHRAGM, VITON	2
9	DP-94003632	DIAPHRAGM CLAMPING WASHER	2
10	DP-94004843	DIAPHRAGM CLAMPING BOLT	2
11	DP-94000209	PUMP HEAD	2
12	DP-86279600	SCREW M 8X40	12
❖ 13	DP-80318100	O-RING	4
14	DP-94001432	INLET MANIFOLD	1
❖ 15	SC-80306000	O-RING	1
16	SC-84052100	90 DEGREE HOSE BARB	1

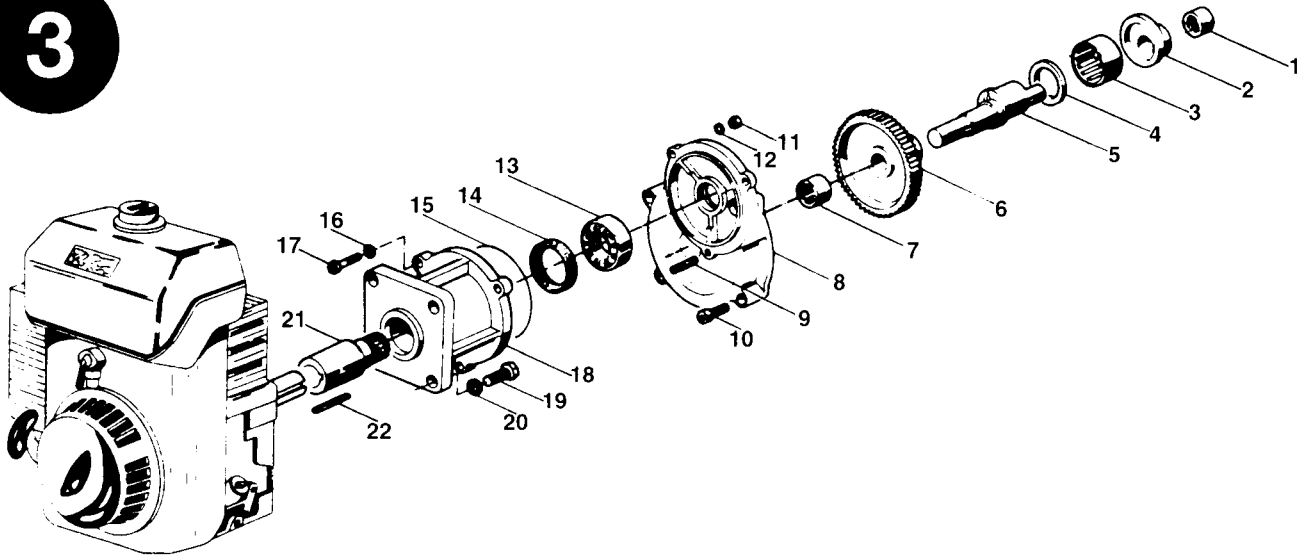
ITEM	PART NUMBER	DESCRIPTION	QTY.
17	SC-82004210	BARB NUT	1
18	DP-94007566	CAP	1
19	DP-94000409	BALLASTER COVER LOWER	1
❖ 20	DP-94004131	DIAPHRAGM DAMPENER	1
21	DP-94000309	COVER BALLASTER TOP	1
22	DP-81753700	D.33 GALVANIZED CLAMP	1
23	SC-81457500	NUT M8	4
25	DP-86160500	AIR VALVE	1
27	DP-94004332	OIL FILLER	1
❖ 28	DP-94004431	OIL FILLER CAP	1
31	DP-84368500	WASHER DIA. 10	8
* ❖ 41	DP-80321900	O-RING 3X25	4
* ❖ 49	DP-82415400	GASKET D. 30X24X1, 5	4
* 51	DP-94982897	CHECK VALVE	4
52	DP-94009198	VALVE PLUG	2
❖ 54	DP-94008072	CRANKCASE COVER GASKET	1
55	DP-94009098	PLUG	2

2

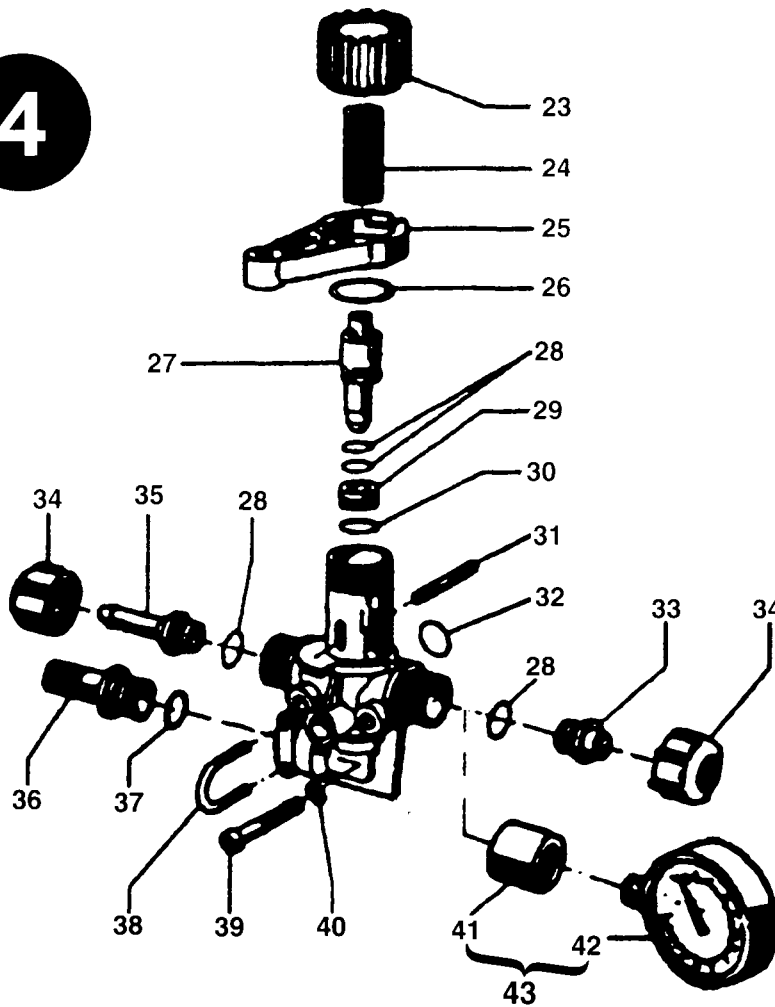
ITEM	PART NUMBER	DESCRIPTION	QTY.
56	DP-81253100	NEEDLE CASE	1
57	DP-94002632	CRANKSHAFT SPACER	1
58	DP-81268800	NEEDLE CASE	1
59	DP-94002732	SPACER	1
60	DP-80126400	SHAFT RING DIA. 35 MM	1
61	DP-94002261	MOUNTING BRACKETS	1
62	DP-86205900	GALVANIZED SCREW 6X14	4
63	DP-86216800	SCREW M6X22	4
64	DP-94002926	CRANKSHAFT	1
65	DP-94021609	BEARING HOUSE	1
❖ 66	DP-80217810	ROUND RING D. 40X52X7	1
67	DP-81283700	BALL BEARING	1

DP-43-GRI & DP-43-GRI2.2

3



4



3

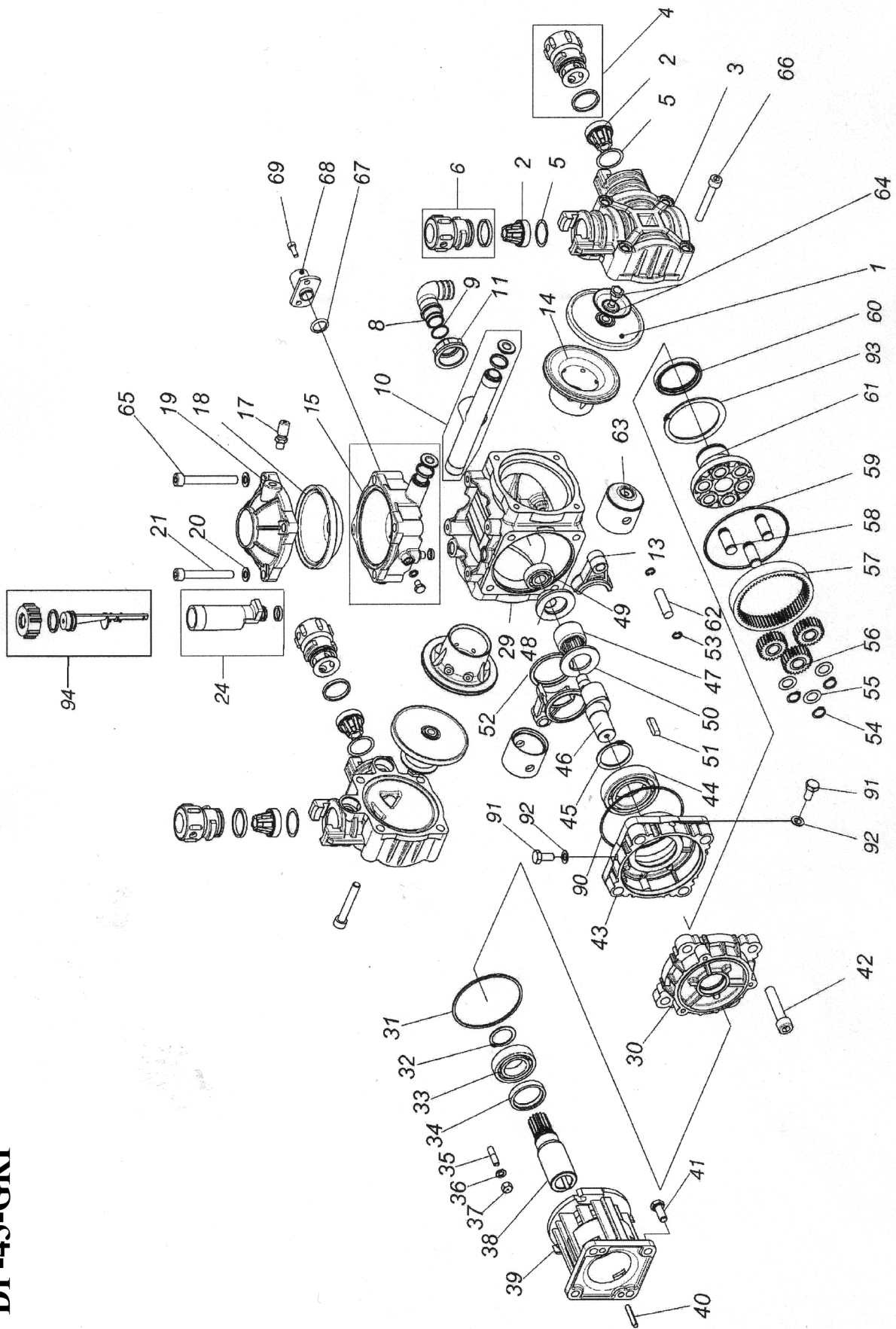
PARTS LIST FOR DP-43-GRI & DP-43-GRI2.2

ITEM	PART NUMBER	DESCRIPTION	QTY.
1	DP-81253100	NEEDLE CASE	1
2	DP-94002632	CRANKSHAFT SPACER	1
3	DP-81268800	NEEDLE CASE	1
4	DP-94002732	SPACER	1
5	DP-94021526	CRANKSHAFT	1
6	DP-94021242	GEAR	1
7	DP-81254600	ROLL BUSHING	1
8	DP-94020809	GEARBOX CASE	1
9	DP-83800600	STUD M 5X18	1
10	DP-86226100	SCREW M6X30	4
11	DP-81452500	NUT M5	3
12	DP-84354200	CHAMFERED WASHER D.5	2
13	DP-81263100	BEARING	1
14	DP-80211700	OIL SEAL D.30X40X7	1
15	DP-80321064	O-RING DIA. 2, 62X75, 87	1
16	DP-84356000	WASHER	3
17	DP-86193510	SCREW	2
18	DP-94021009	FLANGE FOR DIRECT COUPLING	1
19	DP-86256600	SCREW 5/16	4
20	DP-84368500	WASHER DIS. 10	4
21	DP-94021142	PINION GEAR (DP-43GRI)	1
21	DP-94021842	PINION GEAR (DP-43GRI2.2)	1
22	DP-80643600	KEY	1

4

ITEM	PART NUMBER	DESCRIPTION	QTY.
23	SC-94020332	KNOB	1
24	SC-94007348	SPRING	1
25	SC-94020232	LEVER	1
26	SC-80319900	O-RING	1
27	SC-94020432	PLUNGER	1
28	SC-80317400	O-RING	4
29	SC-05006851	SEAT	1
30	SC-80305600	O-RING	1
31	SC-85104500	PIN	1
32	DP-80321700	O-RING	1
33	SC-94020132	PLUG	1
34	SC-82001500	CAP NUT	2
35	SC-84154400	HOSE BARB 3/8	1
36	SC-84155100	HOSE BARB 1/2	1
37	SC-80321350	O-RING	1
38	SC-94020649	KEEPER	1
39	SC-86194390	BOLT	2
40	DP-84354200	WASHER	2
41	SC-94020732	NIPPLE	1
42	SC-83001000	PRESSURE GAUGE	1
43	SC-94984997	PRESSURE GAUGE KIT	1

DP-43-GRP



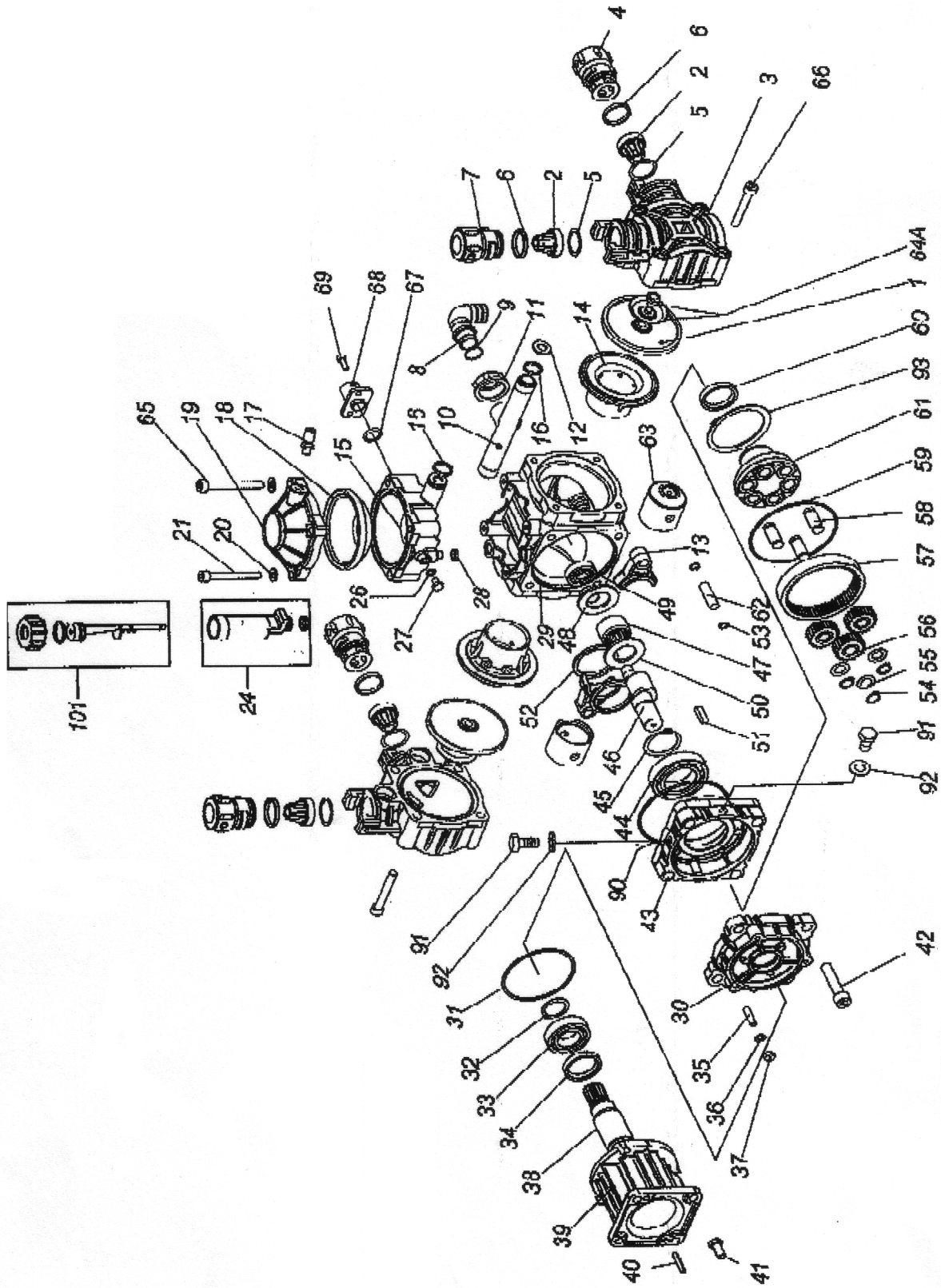
* REPAIR KIT
DP-94991297

DIAPHRAGM PUMP DP-43-GRP

❖ VALVE KIT
DP-94991697

ITEM	PART NUMBER	DESCRIPTION	QTY	ITEM	PART NUMBER	DESCRIPTION	QTY
*1	DP-94004031	PISTON DIAPHRAGM	2	45	DP-80126400	SNAP RING	1
❖2	DP-94982997	VALVE 316SS	4	46	DP-94032126	CRANKSHAFT	1
3	DP-94030232	PUMP HEAD	2	47	DP-81268800	NEEDLE BEARING	1
4	DP-94986997	INLET CAP KIT	2	48	DP-94002632	SPACER	1
❖*5	DP-82415450	GASKET	4	49	DP-81252200	BALL BEARING	1
6	DP-94987897	OUTLET CAP KIT	2	50	DP-94002732	SPACER	1
8	SC-84052100	SUCTION CONNECTOR D.20	1	51	DP-80647300	TAB 6X6X25	1
*9	DP-80306050	VITON O-RING 1.78X12.42	1	52	DP-94004776	CONROD RING	2
10	DP-94986897	INLET MANIFOLD KIT	1	53	DP-80000300	SNAP RING DIA. 10	4
11	DP-92004210	WING NUT G.3/4	1	54	DP-80108100	SNAP RING DIA. 12	3
13	DP-94000809	CONRODS	2	55	DP-84388000	RING D. 12X18	3
14	DP-94000701	PISTON SLEEVE	2	56	DP-94032319	GEAR Z=24	3
15	DP-94986797	DAMPER BODY KIT	1	57	DP-94032519	GEARZ=63	1
17	DP-86160500	AIR VALVE	1	58	DP-94031549	PIN	3
*18	DP-94004131	DIAPHRAGM DAMPENER	1	59	DP-80321067	O-RING 2.62X88.57	1
19	DP-94000309	COVER BALLASTER TOP	1	60	DP-80217800	OIL SEAL	1
20	DP-84368500	WASHER DIA. 8,2X15'X',5	4	61	DP-94031209	GEARS HOLDER HUB	1
21	DP-86294500	SCREW M8X60	2	62	DP-85200400	PISTON PIN	2
*22	DP-80318110	VITON O-RING	1	63	DP-94001708	PISTON	2
24	DP-94986697	OIL FILLER	1	64	DP-94990997	DIAPHRAGM WASHER/BOLT KIT	2
29	DP-94030109	CRANKCASE	1	65	DP-86295100	SCREW M8X65	2
30	DP-94031109	GEARBOX (ENGINE SIDE)	1	66	DP-86290000	SCREW M8X55	8
31	DP-80321064	O-RING 2.62X75.87	1	*67	DP-80321710	VITON O-RING 3.0X14	1
32	DP-80118500	SNAP RING DIA. 25	1	68	DP-31135751	SS OUTLET CONNECTION 1/2 NPT	1
33	DP-81270000	BALL BEARING	1	69	DP-86193460	SCREW 5X16	2
*34	DP-80211700	OIL SEAL	1	*90	DP-80308090	O-RING 1.78X82.27	1
35	DP-83801200	STUD M6X18	3	91	DP-86245800	SCRW M8X12	2
36	DP-84358500	WASHER DIA. 6	3	92	DP-84364290	COPPER WASHER	2
37	DP-81454500	NUT M6	3	93	DP-80137900	SNAP RING	1
38	DP-94032742	PINION	1	101	DP-94985597	OIL FILLER CAP ASY	1
39	DP-94033009	FLANGE	1				
40	DP-80643600	TAB 4.75X5X30	1				
41	DP-86256600	SCREW 5/16"	4				
41	DP-86255500	SCREW M8X20	4				
42	DP-86350000	SCREW M10X50	4				
43	DP-94031009	BEARING HOUSING	1				
44	DP-81283700	BALL BEARING	1				

DP-43-GRPC



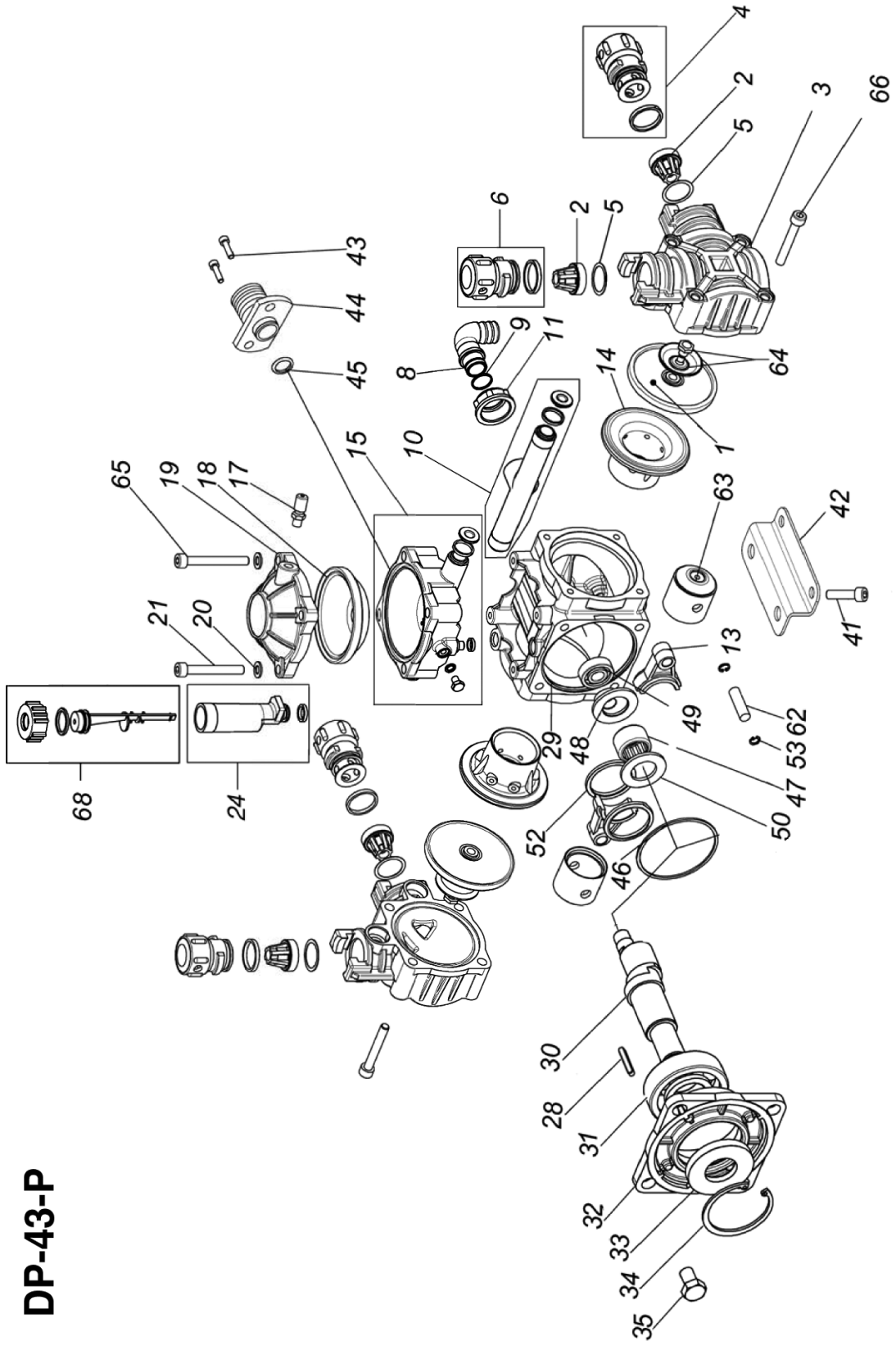
*REPAIR KIT
DP-94991297

DIAPHRAGM PUMP DP-43-GRPC

❖VALVE KIT
DP-94991697

ITEM	PART NUMBER	DESCRIPTION	QTY	ITEM	PART NUMBER	DESCRIPTION	QTY
*1	DP-94004031	PISTON DIAPHRAGM	2	40	DP-80643600	TAB 4,75X5X30	1
❖2	DP-94982897-A	CHECK VALVE	4	41	DP-86256600	SCREW 5/16"	4
3	DP-94030232	PUMP HEAD	2	41	DP-86255500	SCRW M8X20	4
4	DP-94033932	INLET VALVE CAP	2	42	DP-86350000	SCRW M10X50	4
*❖5	DP-82415460	GASKET	4	43	DP-94031009	BEARING HOUSING	1
*6	DP-80321905	VITON O-RING 3X25	4	44	DP-81283700	BALL BEARING	1
7	DP-94033832	OUTLET VALVE CAP	2	45	DP-80126400	SNAP RING	1
8	SC-84052100	SUCTION CONNECTOR D.20	1	46	DP-94032126	CRANKSHAFT	1
*9	EP-80306050	VITON O-RING 1.78X12.42	1	47	DP-81268800	NEEDLE BEARING	1
10	DP-94001432	INLET MANIFOLD	1	48	DP-94002632	SPACER	1
11	DP-92004210	WING NUT G.3/4	1	49	DP-81252200	BALL BEARING	1
12	DP-94030532	BUSHING	2	50	DP-94002732	SPACER	1
13	DP-94000809	CONRODS	2	51	DP-80647300	TAB 6X6X25	1
14	DP-94000701	PISTON SLEEVE	2	52	DP-94004776	CONROD RING	2
15	DP-94031632	BALLASTER LOWER HALF	1	53	DP-80000300	SNAP RING DIA. 10	4
*16	DP-80318110	VITON O-RING 2,62X15,54	4	54	DP-80108100	SNAP RING DIA. 12	3
17	DP-8616-500	AIR VALVE	1	55	DP-84388000	RING D. 12X18	3
*18	DP-94004131	DIAPHRAGM DAMPENER	1	56	DP-94032319	GEAR Z=24	3
19	DP-94000309	COVER BALLASTER TOP	1	57	DP-94032519	GEARZ=63	1
20	DP-84368500	WASHER DIA. 8,2X15'X',5	4	58	DP-94031549	PIN	3
21	DP-86294500	SCREW M8X60	2	59	DP-80321067	O-RING 2.62X88.57	1
24	DP-94986697	OIL FILLER	1	*60	DP-80217800	OIL SEAL	1
*26	DP-80304900	O-RING 1.78X5.28	1	*61	DP-94031209	GEARS HOLDER HUB	1
27	DP-86194800	SCREW M6X8	1	62	DP-85200400	PISTON PIN	2
*28	SC-80317000	D-RING 2.62X18.72	1	63	DP-94001708	PISTON	2
29	DP-94030109	CRANKCASE	1	64	115571-01	DIAPHRAGM WASHER	2
30	DP-94031109	GEARBOX (ENGINE SIDE)	1	64A	115572-01	BOLT-ALLOY	2
*31	DP-80321064	O-RING 2.62X75.87	1	65	DP-86295100	SCREW M8X65	2
32	DP-80118500	SNAP RING DIA. 25	1	66	DP-86290000	SCREW M8X55	8
33	DP-81270000	BALL BEARING	1	*67	DP-80321710	VITON O-RING 3.0X14	1
*34	DP-80211700	OIL SEAL	1	68	DP-31135751	SS OUTLET CONNECTION 1/2 NPT	1
35	DP-83801200	STUD M6X18	1	69	DP-86193460	SCREW 5X16	2
36	DP-84358500	WASHER DIA. 6	1	90	DP-80308090	O-RING 1.78X82.27	1
37	DP-81454500	NUT M6	3	91	DP-86245800	SCRW M8X12	2
38	DP-94032742	PINION	3	92	DP-84364290	COPPER WASHER	2
39	DP-94033009	FLANGE	1	93	DP-80137900	SNAP RING	1
				101	DP-94985597	OIL FILLER CAP ASY	1

DP-43-P



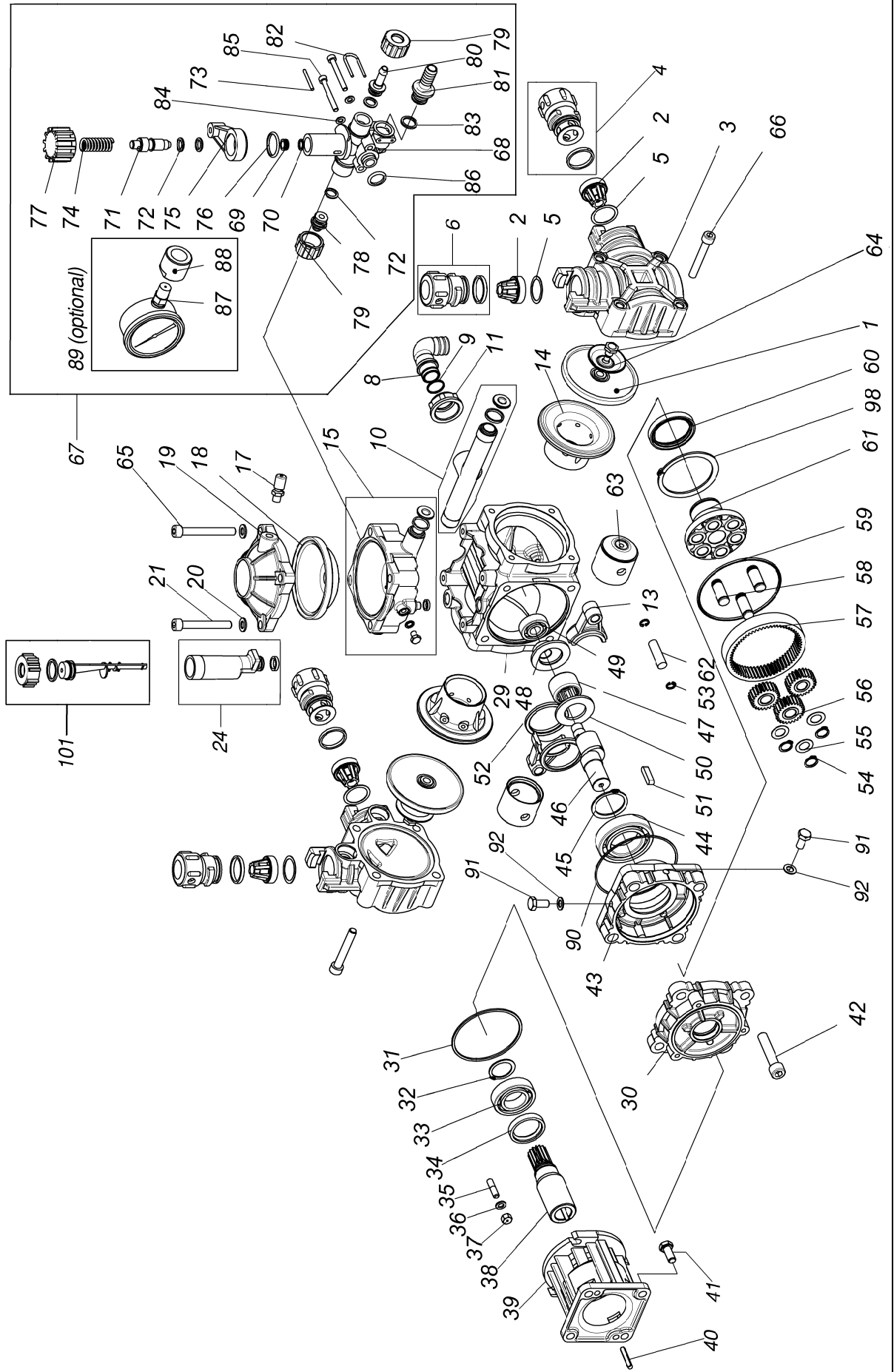
*REPAIR KIT
DP-94991297

DIAPHRAGM PUMP DP-43-P

❖VALVE KIT
DP-94991697

ITEM	PART NUMBER	DESCRIPTION	QTY	ITEM	PART NUMBER	DESCRIPTION	QTY
*1	DP-94004031	PISTON DIAPHRAGM	2	32	DP-94033609	BEARING HOUSING	1
❖2	DP-94982997	CHECK VALVE	4	33	DP-80209990	OIL SEAL 25X62X17	1
3	DP-94030232	PUMP HEAD	2	34	DP-80136900	SNAP RING D.52	1
*4	DP-94986697	KIT, INLET CAP	2	35	DP-86318500	SCREW M10X16	4
*❖5	DP-82415450	GASKET	4	41	DP-86205900	SCREW M6X14	4
*6	DP-94987897	KIT, OUTLET CAP	2	42	DP-94009961	MOUNTING RAIL	2
8	DP-84052100	SUCTION CONNECTOR	1	43	DP-86193460	SCREW M5X16	2
*9	DP-80306050	O-RING 1.78X12.42	1	44	DP-31135751	SS OUTLET CONNECTOR	1
*10	DP-94986897	KIT, INLET MANIFOLD	1	45	DP-80321700	O-RING 3,0X14	1
11	SC-82004210	WING NUT G.3/4	1	*46	DP-80308090	O-RING, D.1.78X82.27	1
13	DP-94000809	CONROD	2	47	DP-81268800	NEEDLE BEARING	1
14	DP-94000701	PISTON SLEEVE	2	48	DP-94002632	SPACER	1
*15	DP-94986797	KIT, DAMAPER BODY	1	49	DP-81252200	BALL BEARING	1
17	DP-86160500	AIR VALVE	1	50	DP-94002732	SPACER	1
*18	DP-94004131	DIAPHRAGM DAMPENER	1	52	DP-94004776	CONROD RING	2
19	DP-94000309	COVER BALLASTER TOP	1	53	DP-80000300	SNAP RING DIA. 10	4
20	DP-84368500	WASHER DIA. 8,4X15X15X1,5	4	62	DP-85200400	PISTON PIN	2
21	DP-86294500	SCREW M8X60	2	63	DP-94001708	PISTON	2
*24	DP-94986697	KIT, OIL FILLER	1	64	DP-94990997	KIT, DIAPH. WASHER/SCREW	2
28	DP-80643600	TAB 4,75X5X30	1	65	DP-86295100	SCREW M8X65	2
29	DP-94030109	CRANKCASE	1	66	DP-86290000	SCREW M8X55	8
30	DP-94032326	CRANKSHAFT 3/4"	1	*68	DP-94985597	KIT, ROP OIL INDICATOR	1
31	DP-81272500	BALL BEARING	1				

DP43-GRP 3/4"
DP43-GRP 5/8"



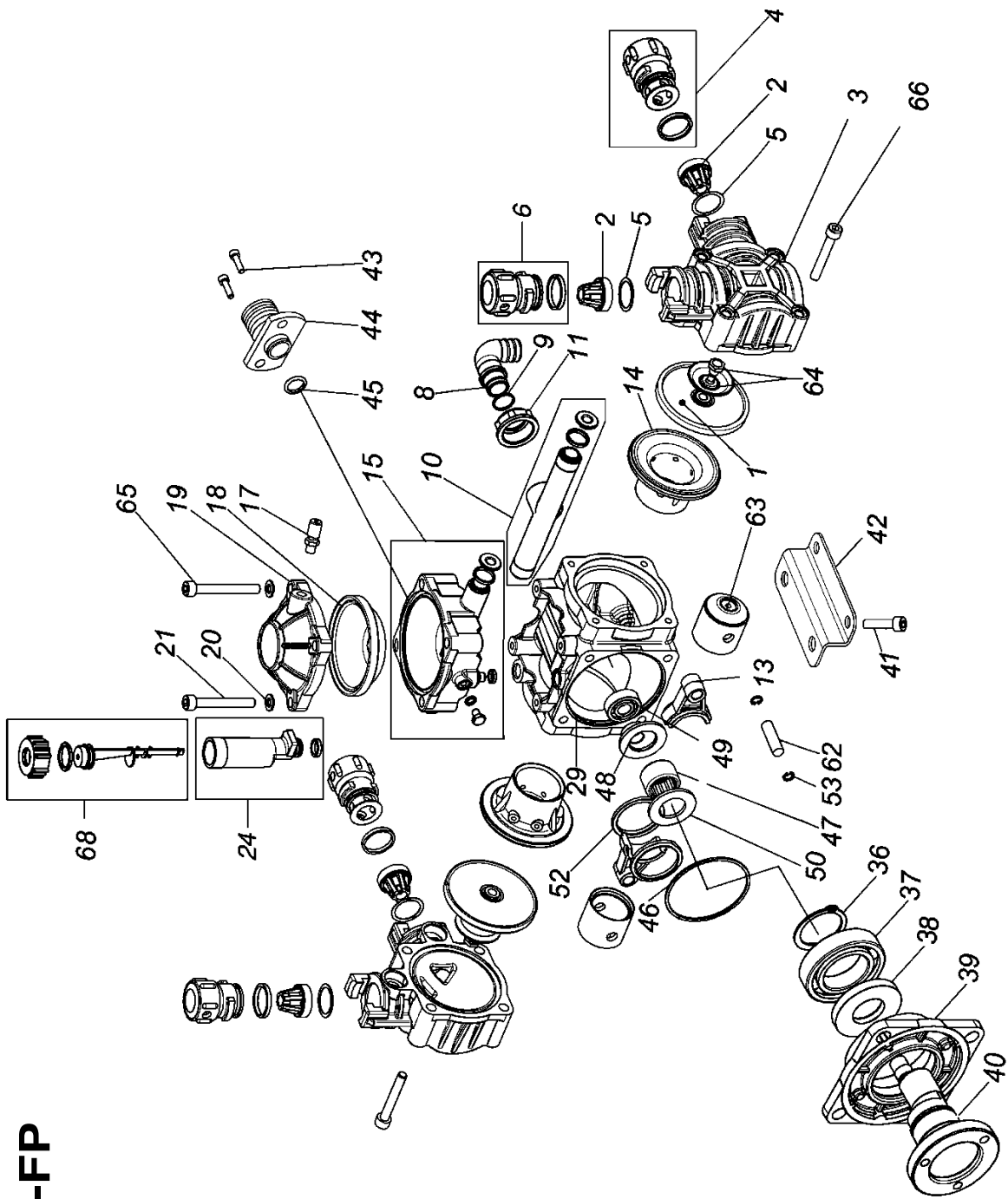
*REPAIR KIT
DP-94991297

DIAPHRAGM PUMPS DP-43-GRIP (3/4") AND DP-43-GRIP2.2 (5/8")

❖ VALVE KIT
DP-94991697

POS	PART NUMBER	DESCRIPTION	QTY	POS	PART NUMBER	DESCRIPTION	QTY
*1	DP-94004031	PISTON DIAPHRAGM	2	52	DP-94004776	CONROD RING	2
❖2	DP-94982997	VALVE ASSY	4	53	DP-80000300	SNAP RING DIA.10	4
3	DP-94030232	PUMP HEAD	2	54	DP-80108100	SNAP RING DIA.12	3
*4	DP-94986997	KIT INLET CAP	2	55	DP-84388000	RING D.12X18	3
❖5	DP-82415450	GASKET	4	56	DP-94032319	GEAR Z=24	3
*6	DP-94987897	KIT OUTLET CAP	2	57	DP-94032519	GEAR	1
8	DP-84052100	SUCTION CONNECTOR DIA 20	2	58	DP-94031549	PIN	3
*9	DP-80306000	O-RING, 1.78X12.42	1	*59	DP-80321067	O-RING 2.62X88.57	1
*10	DP-98986897	KIT INLET MANIFOLD	1	*60	DP-80217800	OIL SEAL D.40X52X7	1
11	DP-82004210	WING NUT G.3/4	1	61	DP-94031209	GEARS HOLDER HUB	1
13	DP-94000809	CONROD	2	62	DP-85200400	PISTON PIN	2
14	DP-94000701	PISTON SLEEVE	2	63	DP-94001708	PISTON	2
*15	DP-94986797	KIT DAMPER BODY	1	64	DP-03002551	KIT DIAPHRAGM WASHER/BOLT	2
17	DP-86160500	AIR VALVE	1	65	DP-86295100	SCREW TCEI M8X65	2
*18	DP-94004131	DIAPHRAGM BALLASTER	1	66	DP-86290000	SCREW TCEI M8X55	8
19	DP-94000309	COVER BALLASTER TOP	1	67	SC-1066-2	PRESSURE REGULATOR	1
20	DP-84368500	WASHER DIA. 8.2X15X1.5	4	*68	DP-94020032	PRESSURE REGULATOR BODY	1
21	DP-86294500	SCREW TCEI M8X60 UNI 5931	2	69	DP-05006851	SEAT	1
*24	DP-94986697	KIT OIL FILLER	1	70	DP-80305600	O-RING 1.78X8.73	1
29	DP-94030109	CRANKCASE	1	71	DP-94020432	POPPET	1
30	DP-94031109	GEARBOX (ENGINE SIDE)	1	72	DP-80317400	O-RING 2.62X9.92	4
*31	DP-80321064	O-RING 2.62X75.87	1	73	DP-85104500	PIN DIA 3X30	1
32	DP-80118500	SNAP RING DIA.25	1	74	DP-94007348	SPRING	1
33	DP-81270000	BALL BEARING	1	75	DP-94020232	LEVER	1
*34	DP-80211700	OIL SEAL D.30X40X7	1	76	DP-80319900	O-RING 2.62X21.89	1
35	DP-83801200	STUD M6X18 UNI5911	3	77	DP-94020332	KNOB	1
36	DP-84358500	WASHER DIA.6 UNI6592	3	78	DP-94020132	PRESSURE REGULATOR PLUC	1
37	DP-81454500	NUT M6 UNI5587	3	79	DP-82001500	WING NUT G.1/2	2
38	DP-94032742	PINION (3/4")	1	80	DP-84154400	STRAIGHT CONN DIA.10	2
38	DP-94033442	PINION (5/8")	1	81	DP-84155100	RETURN CONN DIA.13	1
39	DP-94033009	FLANGE	1	82	DP-94020649	QUICK RELEASE PIN	1
40	DP-80643600	TAB 4.75X5X30	1	83	DP-80317800	O-RING, 2.62X13.1	1
41	DP-86256600	SCREW TE 5/16"-24 UNF (3/4")	4	84	DP-84354200	WASHER D.5.3X10X1	2
41	DP-86255500	SCREW TE M8X20 UNI5739 (5/8")	4	85	DP-86194390	SCREW TCEI M5X45 UNI 5931	2
42	DP-86350000	SCREW TCEI M10X50 UNI5931	4	*86	DP-80321700	O-RING 3.0X14	1
43	DP-94031009	BEARING HOUSING	1	87	DP-83001000	PRESSURE GAUGE (OPT)	1
44	DP-81283700	BALL BEARING	1	88	DP-94020732	COUPLING (OPT)	1
45	DP-80126400	SNAP RING	1	89	DP-94984997	PRESSURE GAUGE KIT (OPT)	1
46	DP-94032126	CRANKSHAFT	1	*90	DP-80308090	O-RING 1.78X82.24	1
47	DP-81268800	NEEDLE BEARING	1	91	DP-86245800	SCREW M8X12 UNI5739	2
48	DP-94002632	SPACER	1	*92	DP-84364290	COPPER WASHER	2
49	DP-81252200	BALL BEARING	1	98	DP-80137900	SNAP RING	1
50	DP-94002732	SPACER	1	101	DP-94985597	KIT ROP OIL INDICATOR	1
51	DP-80647300	TAB 6X6X25	1				

DP-43-FP



*REPAIR KIT
DP-94991297

DIAPHRAGM PUMPS DP-43-FP

❖ VALVE KIT
DP-94991697

POS	PART NUMBER	DESCRIPTION	QTY
*1	DP-94004031	PISTON DIAPHRAGM	2
❖2	DP-94982997	VALVE ASSY	4
3	DP-94030232	PUMP HEAD	2
*4	DP-94986997	KIT INLET CAP	2
❖*5	DP-82415450	GASKET	4
*6	DP-94987897	KIT OUTLET CAP	2
8	DP-84052100	SUCTION CONNECTOR DIA 20	1
*9	DP-80306050	O-RING, VITON, 1.78X12.42	1
*10	DP-98986897	KIT INLET MANIFOLD	1
11	DP-82004210	WING NUT G.3/4	1
13	DP-94000809	CONROD	2
14	DP-94000701	PISTON SLEEVE	2
*15	DP-94986797	KIT DAMPER BODY	1
17	DP-86160500	AIR VALVE	1
*18	DP-94004131	DIAPHRAGM BALLASTER	1
19	DP-94000309	COVER BALLASTER TOP	1
20	DP-84368500	WASHER DIA. 8.2X15X1,5	4
21	DP-86294500	SCREW TCEI M8X60 UNI 5931	2
*24	DP-94986697	KIT OIL FILLER	1
28	DP-80643600	TAB 5.75X5X30	1
29	DP-94030109	CRANKCASE	1
32	DP-94033609	BEARING HOUSE	1
35	DP-86318500	SCREW M10X16	4

POS	PART NUMBER	DESCRIPTION	QTY
36	DP-80126400	SNAP RING D.35	1
37	DP-81283700	BALL BEARING	1
*38	DP-80217810	OIL SEAL	1
39	DP-94032609	BEARING HOUSING	1
40	DP-94033526	CRANKSHAFT	1
41	DP-86205900	SCREW TE M6X14	4
42	DP-94009961	MOUNTING RAIL	2
43	DP-86193460	SCREW TE M5X16	2
44	DP-31135751	SS OUTLET CONNECTOR	1
*45	DP-80321710	O-RING, VITON, 3,0X14	1
*46	DP-80308090	O-RING, D.1.78X82.27	1
47	DP-81268800	NEEDLE BEARING	1
48	DP-94002632	SPACER	1
49	DP-81252200	BALL BEARING	1
50	DP-94002732	SPACER	1
52	DP-94004776	CONROD RING	2
53	DP-80000300	SNAP RING DIA. 10	4
62	DP-85200400	PISTON PIN	2
63	DP-94001708	PISTON	2
64	DP-94990997	KIT DIAPHRAGM WASHER/SCREW	2
65	DP-86295100	SCREW TCEI M8X65	2
66	DP-86290000	SCREW TCEI M8X55	8
*68	DP-94985597	KIT ROP OIL INDICATOR	1



DIVISION OF ADVANCED SYSTEMS TECHNOLOGY, INC.

290 Pinehurst Drive • Huntsville, Alabama 35806

P. O. Box 1607 • Huntsville, Alabama 35807

Telephone: (256) 721-9090 • FAX (256) 721-9091

Call Toll Free: 1-800-253-2583

TROUBLES AND CURES

TROUBLES	CAUSES	CURES
The pump doesn't reach the required pressure	<ul style="list-style-type: none"> • valves have worn seats • suction hose with air pockets or irregular elbows • worn nozzles or with wrong diameter (see chart) • Clogged strainer 	<ul style="list-style-type: none"> • check valves • check hoses • check nozzles • clean strainer
The pressure gauge fluctuates	<ul style="list-style-type: none"> • pump is sucking air, or air hasn't been evacuated completely • valves blocked 	<ul style="list-style-type: none"> • start pump with the gun open to evacuate the air and commutate • clean and change valves
The liquid flow is irregular	<ul style="list-style-type: none"> • the air in the pulsation-damper is incorrectly set 	<ul style="list-style-type: none"> • check pressure in pulsation damper (see chart)
Output drops and the pump is noisy	<ul style="list-style-type: none"> • oil level is too low 	<ul style="list-style-type: none"> • top up with oil to correct level (halfway of the sump), when pump is operating
Oil comes out of the discharge pipe	<ul style="list-style-type: none"> • one or more diaphragms are broken 	<ul style="list-style-type: none"> • Drain the pump of oil. Dismantle the head and change diaphragms. Fill to the correct oil level.
Oil is changing color into white	<ul style="list-style-type: none"> • Diaphragm failures. Stop pump immediately. 	<ul style="list-style-type: none"> • Drain the pump of oil. Dismantle the head and change diaphragms. Fill to the correct oil level.

LIMITED WARRANTY

THIS WARRANTY IS IN LIEU OF ALL OTHER WRITTEN OR EXPRESS WARRANTIES AND REPRESENTATIONS. ANY IMPLIED WARRANTIES INCLUDING MERCHANTABILITY OR FITNESS FOR ANY PARTICULAR PURPOSE ARE EXPRESSLY LIMITED TO THIS WRITTEN WARRANTY. CDS-JOHN BLUE COMPANY SHALL NOT BE LIABLE FOR CONSEQUENTIAL DAMAGES.

Use of this product for any purpose other than its original intent, abuse of the product, and/or any modification to the original product is strictly prohibited by the manufacturer, CDS-John Blue Company. Any modification to this product should be approved by CDS-John Blue Company prior to use. CDS-John Blue Company will deny Warranty claims and liability in any situation involving misuse, abuse or modification.

Each new machine or component manufactured by CDS-John Blue Company through original buyer is warranted by CDS-John Blue Company to buyer and to any party or parties to whom buyer may resell, lease or lend the equipment to be free from defects in material and workmanship under normal use and service. This obligation of CDS-John Blue Company under this warranty is limited to the repair or replacement of defective parts or correction of improper workmanship of any parts of such equipment which shall within one year from the date of CDS-John Blue's original delivery thereof, be returned to CDS-John Blue's factory, transportation charges prepaid and which CDS-John Blue Company shall determine to its satisfaction upon examination thereof to have been thus defective. When it is impractical to return the defective parts of such equipment to CDS-John Blue's factory, then CDS-John Blue shall have no liability for the labor cost involved in repair or replacing any such parts and shall be liable solely for supplying the material necessary to replace or repair the defective parts, provided that prior thereto CDS-John Blue Company shall have determined to its satisfaction that any such parts are thus defective.

This warranty shall not apply to any equipment which shall have been repaired or altered outside CDS-John Blue's factory in any way so as to affect its durability, nor which has been subjected to misuse, abuse, negligence or accident, or operated in any manner other than in accordance with operating instructions provided by CDS-John Blue Company. This warranty does not extend to repairs made necessary by the use of inferior or unsuitable parts or accessories, or parts or accessories not recommended by CDS-John Blue Company.

CDS-John Blue Company makes no warranties in respect to parts, accessories or components not manufactured by CDS-John Blue Company, same ordinarily being warranted separately by their respective manufacturers.

DIVISION OF ADVANCED SYSTEMS TECHNOLOGIES

HUNTSVILLE, AL

(256) 721-9090