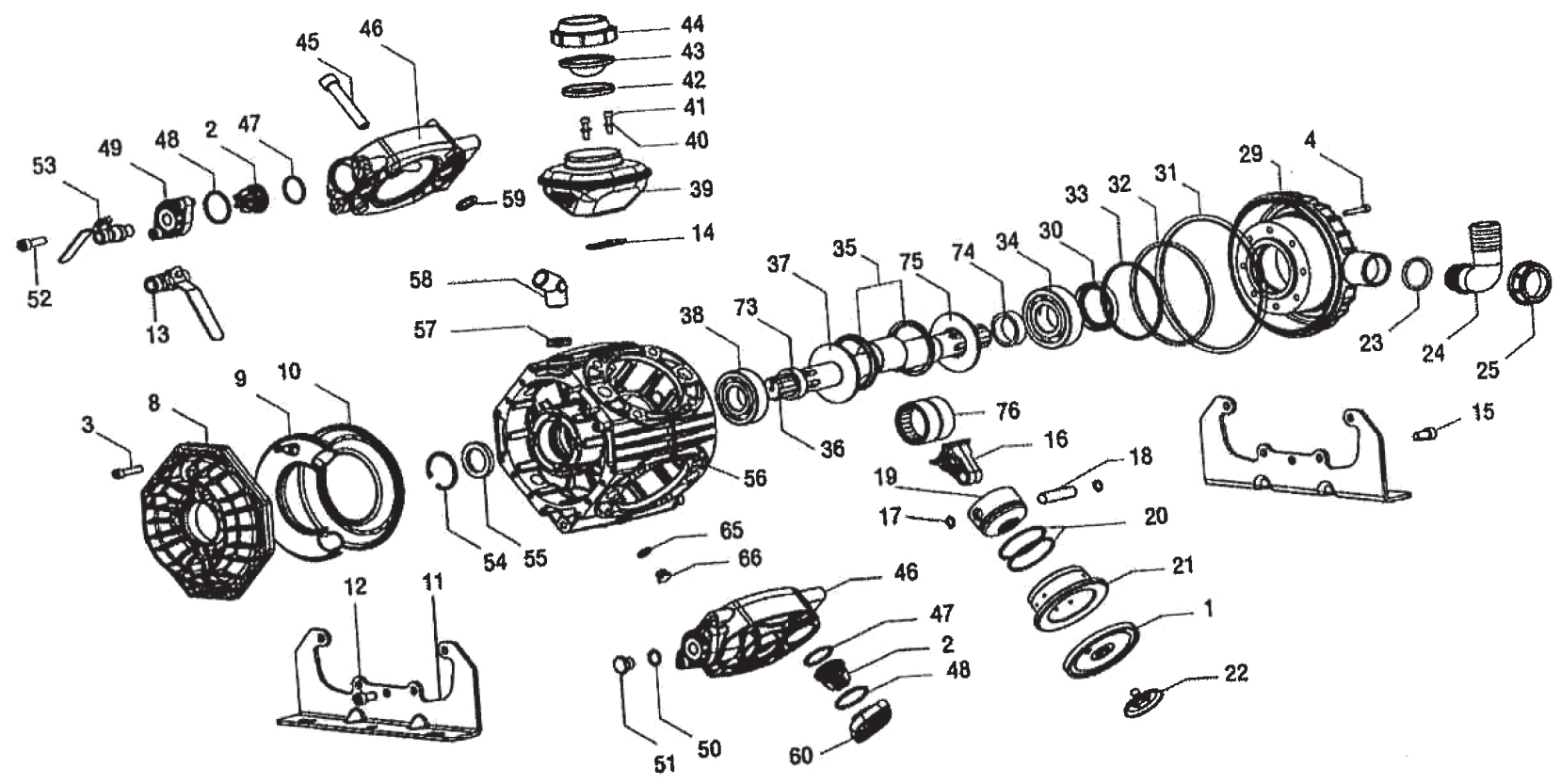


DP 407.1



DIAPHRAGM PUMP MODEL DP-407.1 PARTS LIST

❖ Pump Repair Kit Order DP-41990597

☐ Valve Kit Order DP-41987097

ITEM	PART NUMBER	DESCRIPTION	QTY	ITEM	PART NUMBER	DESCRIPTION	DP-407
1 ❖	DP-95004031	BUNA-N PISTON DIAPHRAGM	4	33 ❖	DP-80329100	O-RING, DIA. 3,53X88,5	1
1	DP-95004033	VITON PISTON DIAPHRAGM (OPT)	4	34	DP-81291300	BALL BEARING 6308 "VD"	1
1	DP-95004000	DESMOPAN PISTON DIAPHRAGM (OPT)	4	35	DP-14001576	CONROD HOLDING RING	2
1	DP-95004036	HPS PISTON DIAPHRAGM (OPT)	4	36	DP-41015026	CRANKSHAFT "VD"	1
2 ☐	DP-35980297	VALVE ASSEMBLY	8	37	DP-41015361	SHAFT RING	1
3	DP-86273000	SCREW M8X30	20	38	DP-81287000	ROLLER BEARING	1
4	DP-86275200	SCREW M8X35	8	39	DP-40980197	OIL FILLER ASSY	1
5	DP-31146632	PLAIN SAFETY CONE (OPT)	1	40	DP-84358500	WASHER	1
6	DP-86184600	SCREW M5, 5X16 (OPT)	3	41	DP-86221600	BOLT, M6X25	2
7	DP-84356000	WASHER DIA. 5,5X15X1,6 (OPT)	3	42	DP-14011632	DIAPHRAGM SPACER	1
8	DP-41010509	BALLASTER COVER	1	43 ❖	DP-41001731	OIL FILLER DIAPHRAGM	1
9 ❖	DP-41012097	NBR BALLASTER DIAPHRAGM	1	44	DP-28014432	OIL FILLER COVER	1
10	DP-41010409	LOWER BALLASTER	1	45	DP-86425000	SCREW, M14X70	16
11	DP-41011361	MOUNTAING RAIL	2	46	DP-41011109	PUMP HEAD	4
12	DP-86326500	SCREW M10X25	5	47 ❖☐	DP-80325100	O-RING, DIA. 3,53X32,93	8
13	DP-84554410	LEFT TAP G.3/8-G.1/2	1	48 ❖☐	DP-80326200	O-RING DIA. 3,53X41,28	8
14 ❖	DP-14001772	GASKET	1	49	DP-41011009	VALVE COVER, G. 3/8"	4
15	DP-86326500	SCREW M10X25	5	50 ❖	DP-82410700	GASKET	2
16	DP-41016509	CONROD	4	51	DP-85257900	CAP, G. 3/8"	2
17	DP-80002100	RING DIA. 15	8	52	DP-86330000	SCREW, M10X30	16
18	DP-85200700	PISTION PIN, DIA. 15X24	4	53	DP-84554400	RIGHT TAP, G. 3/8" – G. 1/2"	1
19	DP-37001609	PISTON	4	54	DP-80136900	SNAP RING, DIA. 52	1
20	DP-81852700	PISTON RING	8	55 ❖	DP-80214310	OIL SEAL, DIA. 35X52X7	1
21	DP-43001501	PISTON SLEEVE	4	56	DP-41013309	CRANKCASE	1
22	DP-41983597	KIT DISK + SCREW INOX	4	57	DP-81490900	BRASS NUT	1
23 ❖	DP-80321910	O-RING, DIA. 3.0X30	1	58	DP-83506328	60 DEGREE ELBOW CONN.	1
24	DP-84059100	90 DEGREE ELBOW CONN.	1	59 ❖	DP-80320000	O-RING, DIA. 2,62X22,22	8
25	DP-82007000	WING NUT, G. 1-1/2"	1	60	DP-41010909	VALVE COVER	4
29	DP-41011209	INLET COVER "VD"	1	65	DP-82407900	WASHER	1
30 ❖	DP-80219000	OIL SEAL, DIA. 40X72X10 "VD"	1	66	DP-85254350	CAP G.1/4"	1
31 ❖	DP-80329500	O-RING, DIA. 3,53X190,10	1	73	DP-41015676	SHAFT SPACER DIA. 35MM	1
32 ❖	DP-80321070	O-RING, DIA. 2,62X126,67	1	76	DP-81295000	NEEDLE ROLLER BEARING	2