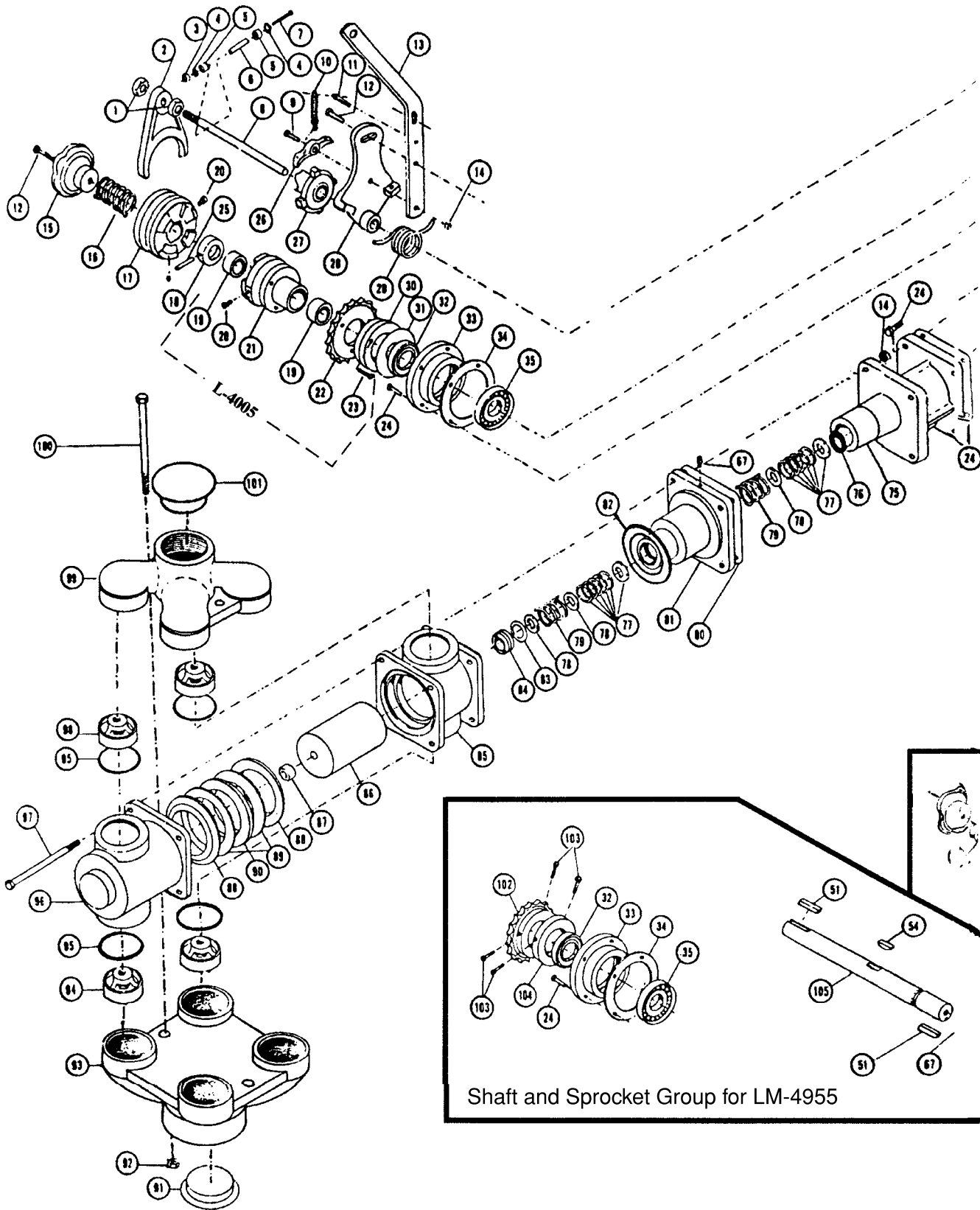


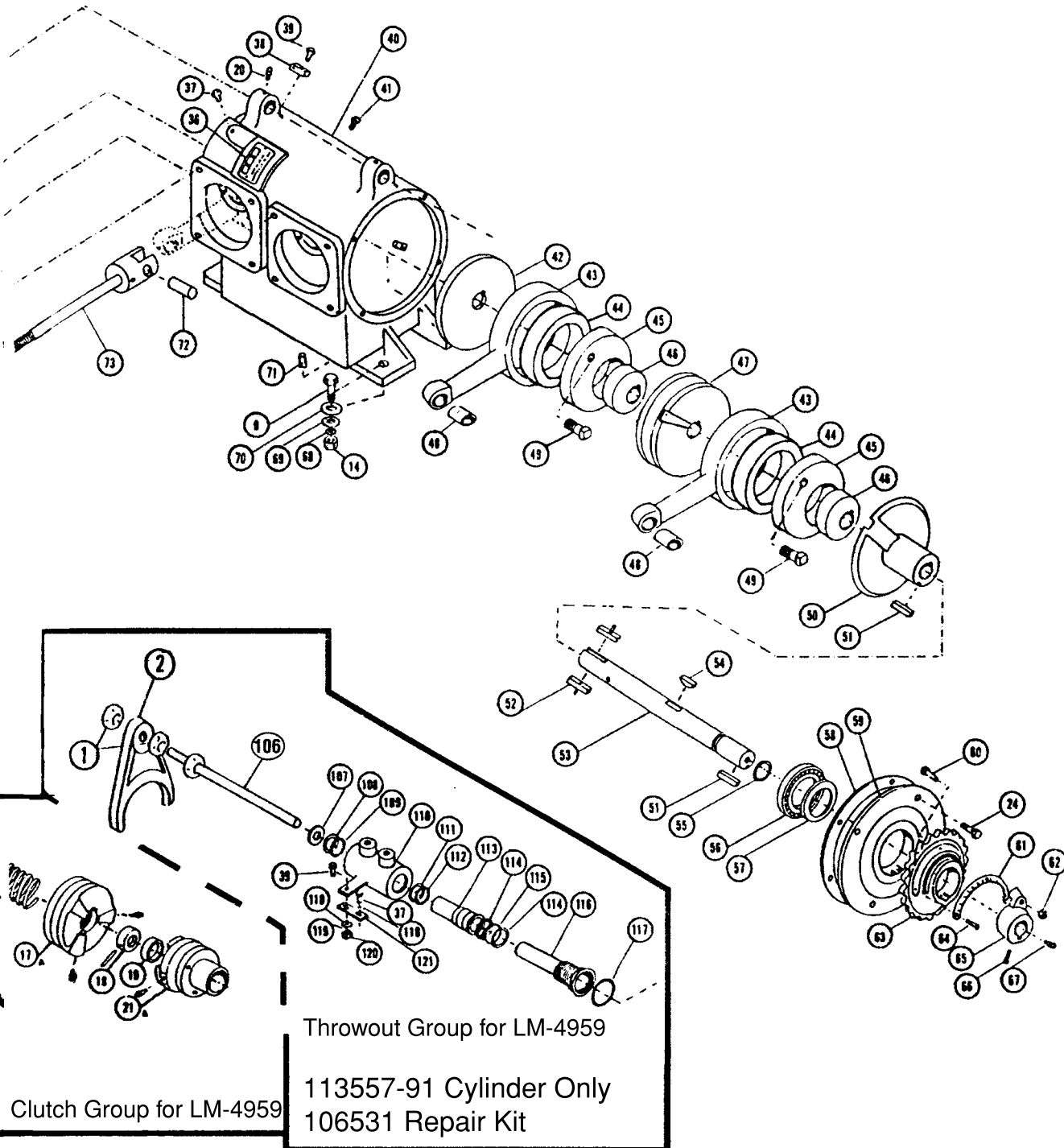
# LM-4950 SERIES PUMP PARTS LIST

REF. NO.	PART NO.	ITEM DESCRIPTION	4950 QTY.	4955 QTY.	4959 QTY.	REF. NO.	PART NO.	ITEM DESCRIPTION	4950 QTY.	4955 QTY.	4959 QTY.
1	92037	5/8" JAM NUT	2	0	2	63	105932-91	STROKE SETTING FLANGE	1	1	1
2	113628-01	THROW-OUT YOKE	1	0	1	64	A-368	SETTING SCALE SCREW	3	3	3
3	92014	#10 SQUARE NUT	1	0	0	65	115630-91	STROKE SETTING ARM	1	1	1
4	A-697	WASHER	2	0	0	66	90532	5/16 X 3/8 SET SCREW	3	3	3
5	A-2762	CAM ROLLER	2	0	0	67	H-30	GREASE FITTING	3	3	3
6	A-2763	ROLL PIN	1	0	0	68	93024	3/8 LOCK WASHER	4	4	4
7	90953	2-1/2 RD HD SCREW	1	0	0	69	93011	3/8 FLAT WASHER	4	4	4
8	L-3006	THROW-OUT ROD	1	0	0	70	A-147	LEG MOUNTING PAD	4	4	4
9	90655	3/8 X 1-1/2 HEX BOLT	5	4	4	71	C-431-B	PLUG	3	3	3
10	F-48	THROW-OUT LEVER SPRING	1	0	0	72	105895-01	CROSSHEAD PIN	2	2	2
11	94010	5/32 X 1 COTTER PIN	1	0	0	73	105900-91	PISTON ROD ASSEMBLY	2	2	2
12	90653	3/8 X 1-1/4 HEX BOLT	2	0	1	74	L-3052	CROSSHEAD, GUIDE GASKET	2	2	2
13	L-3064	THROW-OUT LEVER	1	0	0	75	111935-01	CROSSHEAD GUIDE	2	2	2
14	92024	3/8 HEX NUT	14	12	12	76	111943-01	O-RING	2	2	2
***14	T-2010	3/8 NUT-SS	14	12	12	77	L-1109	ROD VEE PACKING SET	4	4	4
15	A-50	HANDWHEEL	1	0	1	78	L-1041	WASHER	6	6	6
16	HA-57	SAFETY CLUTCH SPRING	1	0	0	79	L-1063	PACKING SPRING	4	4	4
16A	108907-01	SAFETY CLUTCH SPRING	0	0	1	80	L-3074	STUFFING BOX GASKET	2	2	2
17	A-260	CLUTCH	1	0	0	81	111937-01	OUTBOARD STUFFING BOX	2	2	2
17A	108905-91	CLUTCH HYDRAULIC	0	0	1	**81	111937-01S	OUTBOARD STUFFING BOX, SS	2	2	2
18	105373-01	CLUTCH COLLAR	2	0	2	82	115134-01	GASKET	2	2	2
19	A-116	OLITE BUSHING	6	2	5	83	L-1042	RETAINING RING	2	2	2
20	H-28	GREASE FITTING	1	0	0	84	L-1031-2	STUFFING BOX INSERT	2	2	2
21	L-4008-A	SPROCKET CARRIER	0	0	1	85	111938-01	INBOARD CYLINDER	2	2	2
21A	108906-01	SPROCKET CARRIER	1	0	1	**85	111938-01S	INBOARD CYLINDER, SS	2	2	2
22	L-4007	18T SPROCKET	3	0	3	86	112816-91	PISTON PLUNGER ASSEMBLY	2	2	2
23	90993	1/4 X 1-1/2 SOCKET HD BOLT	16	16	16	87	L-1047	SELF-LOCKING NUT	2	2	2
24	90637	5/16 X 1 HEX BOLT	1	0	1	88	L-1045-V	FLANGE PLUNGER PACKING	4	4	4
25	L-4249	DRIVE PIN	1	0	0	89	L-1098	PACKING ADJUSTMT. GASKET	4	4	4
26	A-2758-A	PAWL	1	0	0	90	L-1044-A	FLANGE PACKING WASHER	2	2	2
27	A-2757-A	THROW-OUT CAM	1	0	0	91	C-3519	2" THREAD PROTECTOR	1	1	1
28	L-3007	THROW-OUT BRACKET	1	0	0	92	92029	1/2 HEX NUT	2	2	2
29	114165-01	RIGHT-HAND TORSION SPRING	1	0	1	93	111939-01	SUCTION MANIFOLD	1	1	1
30	L-4009	RETAINING COLLAR	1	1	1	**93	111939-01S	SUCTION MANIFOLD, SS	1	1	1
31	110155-01	WASHER, NYLON	1	1	1	94	109112-92	SUCTION VALVE	4	4	4
32	L-1018	OIL SEAL	1	1	1	95	A-2848	VALUE O-RING	8	8	8
33	L-3023	BEARING HOUSING	1	1	1	96	111940-01	OUTBOARD CYLINDER	2	2	2
34	L-3021	BEARING HOUSING GASKET	1	1	1	**96	111940-01S	OUTBOARD CYLINDER, SS	2	2	2
35	L-3019	CRANKSHAFT BEARING	1	1	1	97	91051	3/8 X 8 HEX HEAD BOLT	8	8	8
36	111958-01	NAME PLATE	1	2	2	**97	91072	3/8-16 X 5-1/2 BOLT, SS	8	8	8
37	90634	5/16 X 1/2 BOLT	1	0	0	98	109113-92	DISCHARGE VALVE	4	4	4
38	L-4014	SPRING ANCHOR	1	0	2	99	111936-01	DISCHARGE MANIFOLD	1	1	1
39	90636	5/16 X 3/4 BOLT	1	1	1	**99	111936-01S	DISCHARGE MANIFOLD, SS	1	1	1
40	113634-01	CRANKCASE	1	1	1	100	90711	1/2-13 X 9-1/2 Bolt	2	2	2
41	S-350	VENT PLUG	1	1	1	**100	90710	1/2-13 X 8-1/2 Bolt	2	2	2
42	L-3020	CRANKSHAFT DISC	2	2	2	101	L-3115	1 1/2 THREAD PROTECTOR	1	1	1
43	113645-91	CONNECTION ROD	2	2	2	102	106532-01	18T SPROCKET	0	1	0
44	113629-01	BEARING CRANK PIN	2	2	2	103	90986	3/8 X 5/8 SET SCREW	0	4	0
45	113633-01	LARGE ECCENTRIC	2	2	2	104	110147-01	SPACER	0	1	0
46	L-3017	SMALL ECCENTRIC	1	1	1	105	115031-01	CRANKSHAFT	0	1	0
47	L-3018	STROKE TRANSFER SLEEVE	2	2	2		115122-01	SPACER-ELEC. CLUTCH SHOULDER	0	1	0
48	113588-01	CONNECTING ROD BUSHING	3	3	3		115125-01	1/4" X 1-1/2" DOWEL PIN	0	1	0
49	L-3004	ECCENTRIC PIN	1	1	1	106	114708-91	THROW-OUT ROD ASSEMBLY	0	0	1
50	L-3056	STROKE LOCATING SLEEVE	2	2	2	107	93016	FLAT WASHER	0	0	1
51	L-1020	SETTING ARM KEY	2	0	2	108	105448-01	BACK-UP RING	0	0	1
52	A-261	CLUTCH KEY	1	0	1	109	A-3776	O-RING	0	0	1
53	L-3013	CRANKSHAFT	1	0	1	110	105447-01	BODY	0	0	1
54	A-4333	KEY, WOODRUFF	1	1	1	111	105452-01	BACK-UP RING	0	0	1
55	L-1022	CRANKSHAFT O-RING	1	1	1	112	105461-01	O-RING	0	0	1
56	L-1007-A	BEARING, LOCATING SLEEVE	1	1	1	113	105449-01	PISTON	0	0	1
57	L-1021	OIL SEAL	1	1	1	114	105465-01	BACK-UP RING	0	0	2
58	L-3002	COVER PLATE GASKET	1	1	1	115	A-2849	O-RING	0	0	1
59	L-3001	COVER PLATE	1	1	1	116	105463-01	CYLINDER	0	0	1
60	91017	3/8 SQUARE HEAD BOLT	1	1	1	117	105500-01	BODY O-RING	0	0	1
61	114763-01	PUMP SETTING SCALE	1	1	1	118	93010	5/16 FLAT WASHER	0	0	4
62	A-3097	3/8 SELF-LOCKING NUT	0	1	0	119	93023	5/16 LOCK WASHER	0	0	2
***	115159-91	ELECTRIC CLUTCH KIT	1	1	1	120	92020	5/16 HEX NUT	0	0	2
						121	105501-01	STRAP			2

\*\*\*Retro-fit Electric Clutch Kit may be adapted to a standard LM-4955 Pump with a serial number after #4800 or with the suffix "-E." \*\*Parts unique to the LM-4950 Stainless Series only.



Shaft and Sprocket Group for LM-4955



Pump Repair Kit – 111947  
 Pump Setting Wrench – L-3092-AS  
 Pump Setting Chart – 105913-91