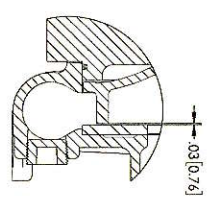
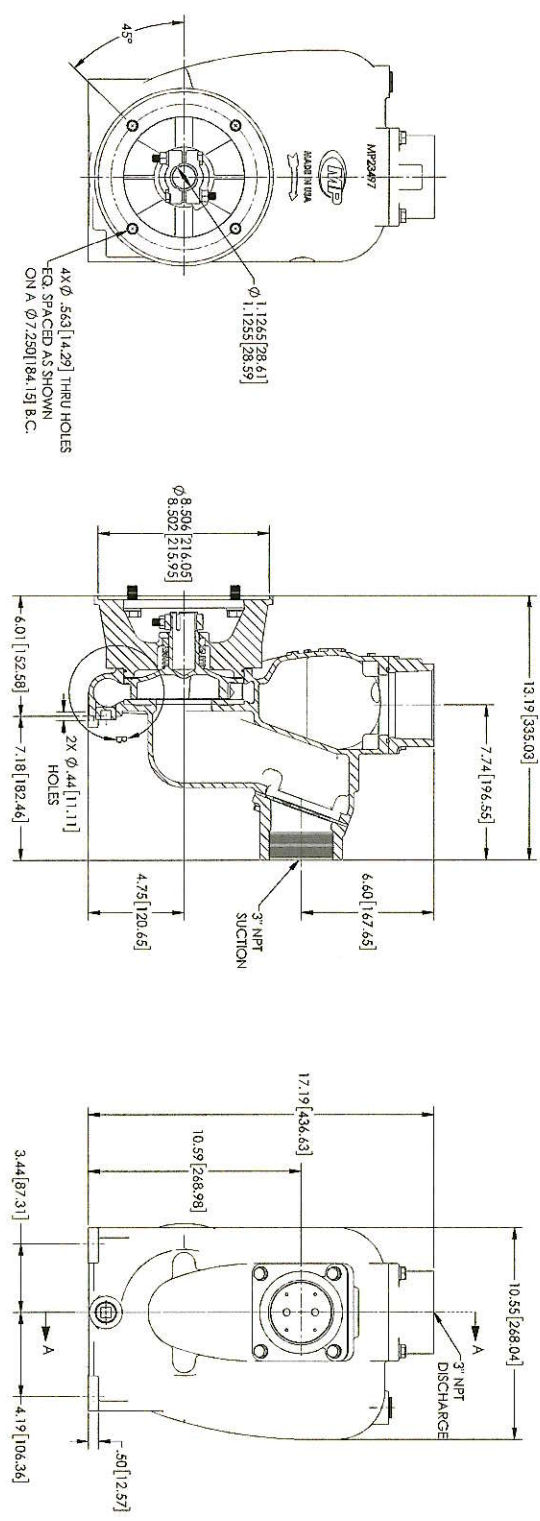
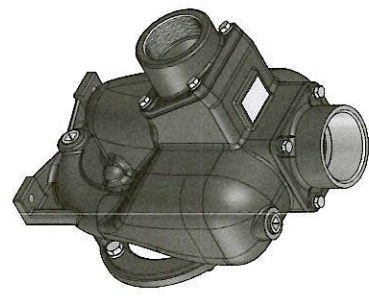


ITEM NO.	PART NUMBER	DESCRIPTION	MATERIAL	QTY.
1	MP21297	CAPSCREW 3/8x1.6x1.13	304 SS	8
2	MP21266	WASHER 3/8x1.6x1.13	SAI IRON	14
3	MP21268	NUT 3/8x1.6x1.13	SAI IRON	1
4	MP11481	PIPE FLUG	STEEL	2
5	MP22351	HOUSING	CAST IRON	1
6	MP21261	1/8x STAINLESS STEEL SETUP STUD	1/8-8 STAINLESS STEEL	6
7	MP22344	WEAR PLATE	STEEL	1
8	MP22342	IMPELLER	1/8-8 ALUMINUM	1
9	MP22342	IMPELLER	DUCTILE IRON	1
10	MP22342	SEAL ASSEMBLY	OCAMIRON	1
11	MP29215	O RING AS 568-162	NYLON	1
12	MP22340	GASKET	EPDM-N2085	1
13	MP22340	GASKET	EPDM-N2085	1
14	MP21268	SEALING SS 3/8x1.6x1.13	304 SS	1
15	MP21264	CAPSCREW 1/2x1.307.28	304 SS	6
16	MP21264	LOCKWASHER 1/2"	304 SS	4
17	MP22339	CLAMP ASSEMBLY	303 SS	1
18	MP22341	DISCONNECT FLANGE	CAST IRON	1
19	MP22341	DISCONNECT FLANGE	CAST IRON	1
20	MP55051	MANIFOLD	PLASTIC P/OUCH LASER	1
21	MP41371	PIP OVERMOULD TOU L BUNA	BUNA	1

PAI PRK C-GCHRP 1.13 6.0
 MP21264
 D1 INK
 REF: 041
 18
 1468 12/2



REV	DATE	BY	CHKD	DESCRIPTION
1				ISSUED FOR MANUFACTURE
2				REVISION
3				REVISION
4				REVISION
5				REVISION
6				REVISION
7				REVISION
8				REVISION

 Litton Power Systems 11111 S. 26th St. Suite 100 Tukwila, WA 98163 Phone: (206) 835-1111 Fax: (206) 835-1112 Email: sales@litton.com	MP OVERDUNTER LIT Litton Power Systems 11111 S. 26th St. Suite 100 Tukwila, WA 98163 Phone: (206) 835-1111 Fax: (206) 835-1112 Email: sales@litton.com
--	---

MODEL: MP2587 PART NUMBER: MP2587 DESCRIPTION: 3" NPT DIAPHRAGM PUMP MATERIAL: 316 SS FINISH: POLISHED WEIGHT: 11.5 LBS DIMENSIONS: 10.55" H x 10.59" W x 17.19" D DRAWN BY: [Signature] CHECKED BY: [Signature] DATE: 11/20/17	MP OVERDUNTER LIT Litton Power Systems 11111 S. 26th St. Suite 100 Tukwila, WA 98163 Phone: (206) 835-1111 Fax: (206) 835-1112 Email: sales@litton.com
--	---