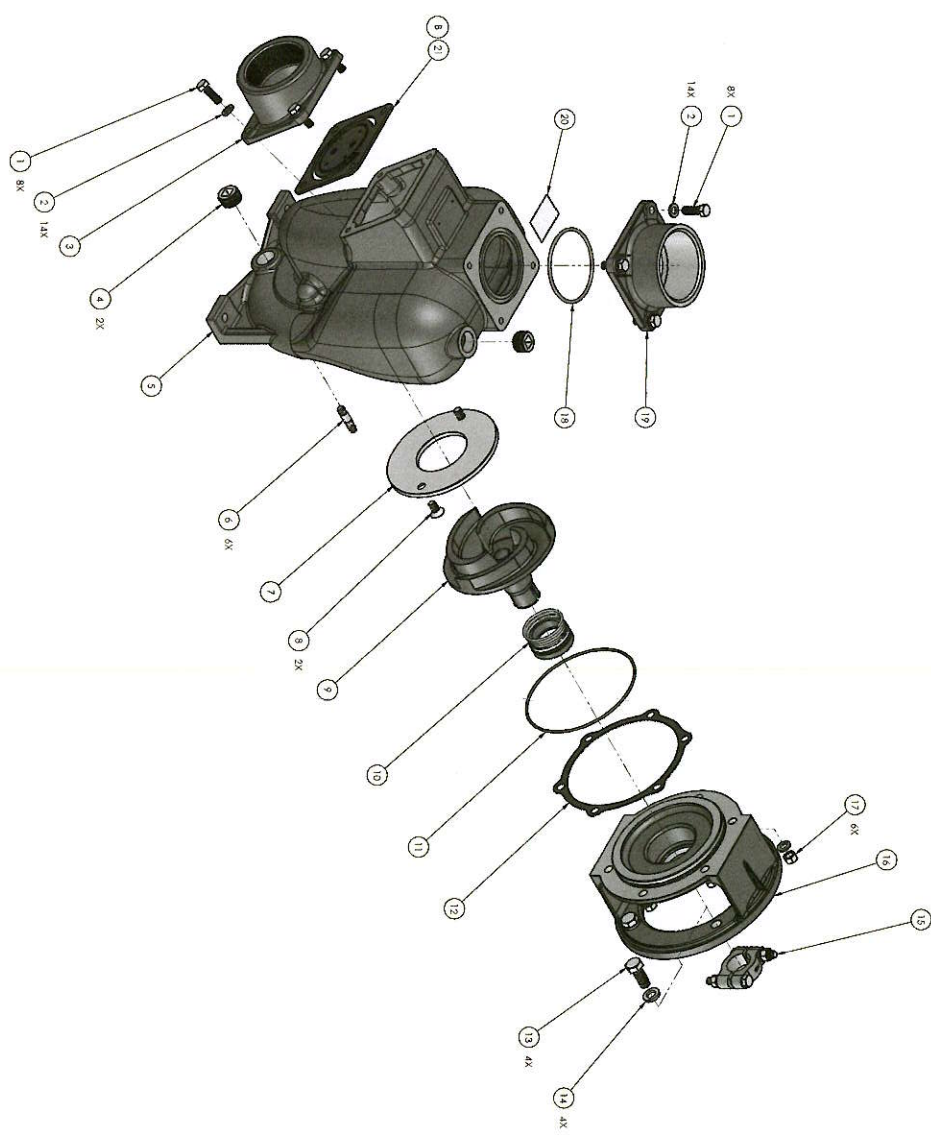
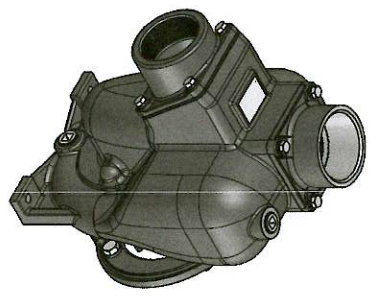


REV	DATE	BY	APP	DESCRIPTION
1	10/20/18	C. L. B.		REVISED
2	10/20/18	C. L. B.		REVISED
3	10/20/18	C. L. B.		REVISED
4	10/20/18	C. L. B.		REVISED
5	10/20/18	C. L. B.		REVISED
6	10/20/18	C. L. B.		REVISED
7	10/20/18	C. L. B.		REVISED
8	10/20/18	C. L. B.		REVISED

MFP OBERDORFER HYDROFLUID
 1115 S. 10TH AVE. SUITE 100
 DENVER, CO 80202
 TEL: 303.733.1111 FAX: 303.733.1112
 WWW.MFPHYDROFLUID.COM

MFP230M7
 1.13 5.75
 10/20/18
 C. L. B.

SHEET NO. 1 OF 2
 10/20/18



ITEM NO.	PART NO.	DESCRIPTION	MATERIAL	QTY.
1	MP21291	CAPSOBREV 3/8H-16X1.13	304 SS	8
2	MP21246	LOCINAVASHER SS136X116	304 SS	14
3	MP22466	BUC FL C:3 FLO 15 C	CAST IRON	1
4	MP41481	PIPE FLUG ST150 SR NO ZINC 3/4 NPT	STEEL	2
5	MP22351	HSG C MACH.FLO L 23497	CAST IRON	1
6	MP21261	STUD SS 3/8-16X1.43	18-8 STAINLESS STEEL	6
7	MP22244	WEAR PTL STL MACH.FLO L C	STEEL	1
8	MP23115	SCREW SS PH SFD 3/8x1.6 X 1/4	304 SS	2
9	MP22499	MP S/A D23897 FLO L 3/8 CD 1.18D	DIGULE IRON	1
10	MP22342	SEAL ASY(1.5 CERAMIC SVC 121	CCV/IRON	1
11	MP29715	ORING VITON/AS-66/142.5 27IDX.103	VITON	1
12	MP22240	CASER.FLO L 002 N45085	LENCE M45085	1
13	MP21246	CAPSOBREV 3/8H 1/213X1.25	304 SS	4
14	MP21254	LOCINAVASHER SS112	304 SS	4
15	MP22639	CLAMP AS 1522266 FLO L CEN T SVC	303 SS	1
16	MP22433	KDP C MACH.CEN-120/LMTR 26882	CAST IRON	1
17	MP21248	HEMUT SS 3/8-16X1.6X1.71/44	304 SS	6
18	MP21138	ORING VITON/AS-66-238 248DX.139	VITON	1
19	MP22471	B8 FL C:3 FLO 15 C	CAST IRON	1
20	MP20051	NAKREPLATE FLAMP PLUMERS HOE SILVER	PLASTIC P-TOUCH	1
21	MP21571	PP OVERMOLD FLO 1 BUNA	BUNA	1

FAI SPK C-COMR 1.13.5.75

 13 MP21394

 14 62

 15 2

 16 2