

2" & 3" 316 Stainless Self-Prime Pump Units

BANJO

An excellent choice for pumping many chemicals compatible with 316 stainless steel. These pump units consist of 2" x 2" & 3" x 3" self-priming pumps constructed of 316 cast stainless steel (*more durable than stamped stainless pumps*). Mechanical seals are Viton® or EPDM depending upon chemical compatibility. Pumps are long-coupled to Totally Enclosed, Fan Cooled (TEFC) motors (1 or 3 Phase). Heavy duty steel base plates with powder coat paint finish and OSHA approved coupling guards. **Call for chemical compatibility check.**

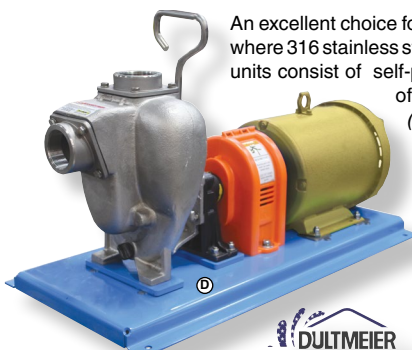


316 SS Pump Units - Motor Driven

Part No.	Size	HP	PH	Elastomer	Max. S.G.	Wt. Lbs.
DU TK3530-SSV	2"	5	3	Viton® Single Seal	1.4	145
DU TK3510-SSV	2"	5	1	Viton® Single Seal	1.4	145
DU TK1033-SSV	3"	10	3	Viton® Single Seal	1.4	340
DU TK1013-SSV	3"	10	1	Viton® Single Seal	1.4	400
DU TK1533-SSV	3"	15	3	Viton® Single Seal	1.9	450
DU TK3530-SSE	2"	5	3	EPDM Single Seal	1.4	145
DU TK3510-SSE	2"	5	1	EPDM Single Seal	1.4	145
DU TK3530-SSW	2"	5	3*	Viton® Double Seal	1.4	145
DU TK3510-SSW	2"	5	1*	Viton® Double Seal	1.4	145

* Viton® Double Seal with Liquid Reservoir.

316 Stainless Self-Priming Pump Units MP Pumps



An excellent choice for pumping many chemicals where 316 stainless steel is required. These pump units consist of self-priming pumps constructed of 316 cast stainless steel (*more durable than stamped stainless pumps*). Seals and elastomers are Viton®. Pumps are long-coupled to Totally Enclosed, Fan Cooled (TEFC) motors (1 or 3 Phase). Heavy duty steel base plates with powder coat paint finish and OSHA approved coupling guards.

316 Stainless Pump Units - Motor Driven

Part No.	Ports	Max. GPM	GPM @ 20 PSI	HP	Phase	** Max. S.G.	Wt. Lbs.
DU MP3530-SSV	2" X 2"	160	110	5	3	1.4	190
DU MP3510-SSV	2" X 2"	160	110	5	1	1.4	145
DU MP1033-SSV	3" X 3"	300	290	10	3	1.4	396
DU MP1013-SSV	3" X 3"	300	290	10	1	1.4	396

** 1.40 S.G. = 11.7 lbs/Gal.



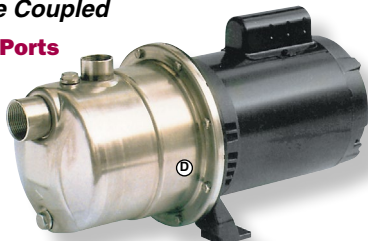
Self Priming Centrifugals

FEATURES:

- Stainless Steel & Noryl
- TEFC Motors
- FPT Ports
- Viton® Mechanical Seals
- For Water Use or Other Light Liquids

Close Coupled

FPT Ports



Part No.	Flow @ Pressure Shown	*Motor	Inlet x Outlet	*Max. S.G.	Wt. Lbs.
EA JEU8067T1C	18 gpm @ 25 psi	3/4 HP, 1 PH	1-1/4" x 1" FPT	1.0	36 lbs.
EA JEU8067T3C	18 gpm @ 25 psi	3/4 HP, 3 PH	1-1/4" x 1" FPT	1.0	30 lbs.
EA JEU1506T1C	18 gpm @ 45 psi	2 HP, 1 PH	1-1/4" x 1" FPT	1.0	50 lbs.
EA JEU1506T3C	18 gpm @ 45 psi	2 HP, 3 PH	1-1/4" x 1" FPT	1.0	46 lbs.

* 1-Phase Motors are 115/230 Volt, 3-Phase are 208/230/460 Volt.
For Water @ 1.0 S.G.; Not for Heavy or Viscous Liquids.

Viton® is a registered trademark of DuPont Performance Elastomers



Pressure Seal® Pumps



Made to provide trouble-free performance with any liquid. Pumps will run dry without seal problems. Pump and Lucite Expansion Tank are factory assembled with 50% Ethylene Glycol and pressurized to 125 PSI. Pumps are straight or self-priming and available in pedestal, clutch or electric motor drive. Cast iron construction with sealed bearings and double viton mechanical pressure seal. Pumps should operate at 3600 RPM. **Note: Follow maintenance instructions on the pressure seal system.**



SCOT Pressure Seal Pumps with 3 Phase TEFC Motor Drive, Base Plate, Guard and Lovejoy Couplings.

SCPS3002

Part No.		Max. S.G.	GPM @20 PSI	Motor	Wt. Lbs.
DU PSE303-53	3x3 Straight	1.0 SG	250	5 HP, 3 PH	230
DU PSE303-73	3x3 Straight	1.0 SG	300	7.5 HP, 3 PH	250
DU PSE303-73A	3x3 Straight	1.4 SG	250	7.5 HP, 3 PH	250
DU PSE303-103	3x3 Straight	1.0 SG	350	10 HP, 3 PH	270
DU PSE303-153	3x3 Straight	1.4 SG	350	15 HP, 3 PH	300
DU PSE403-153	4x3 HB Straight	1.4 SG	350	15 HP, 3 PH	300
DU SCPS3002	3x3 Self Prime	1.4 SG	350	15 HP, 3 PH	350

Note: Water=1.0 S.G.(Specific Gravity)=8.33 lbs. 1.4 S.G.= 12 lb. Material

SCOT Pressure Seal Pumps Less Motor

Part No.	Description	GPM @20 PSI	Wt. Lbs.
SC PSP303	3x3 FPT Straight Centrifugal Pump....	365	90
SC PSP403HB	4x3 HB Straight Centrifugal Pump.....	365	90
SC PSP303SP	3x3 FPT Self Priming Pump.....	335	140



PSD Model with Pressure Seal



Belt Driven Clutch Pumps

- 12 Volt with 7" Clutch (6" Available)
- All Iron (Stainless Available)
- Viton® Mechanical Seals
- Top Discharge (12 o'clock) is Standard; (9 o'clock Available)

RKLD Model



Part No.		GPM @ 20 PSI	Wt. Lbs.
SC PSD303	3x3FPT Pump Unit with Pressure Seal	365	90 lbs.
SC PSD403HB	4x3HB Pump Unit with Pressure Seal	365	95 lbs.
SC RKLD300V	3x3FPT Pump Unit Less Pressure Seal	365	68 lbs.
SC RKLD400V	4x3HB Pump Unit Less Pressure Seal	365	68 lbs.
SC 118-000-236V	Pressure Tube Assembly for Double Seal Pumps		
DU PS-STAND	Steel Bracket for Scot Pressure Assembly		

Chemflo Close-Coupled Stainless Centrifugal Pumps

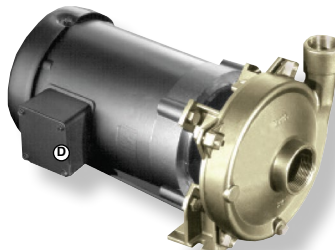


For Severe Duty Service

"CHEMFLO" Pumps are designed for severe service use. The 316SS investment casting is more corrosion-resistant than 304 and much stronger than stamped/formed stainless pumps. 3500 RPM motor. These pumps have Viton® mechanical seals and stainless fasteners. **Nine sizes are available to 450 GPM and 225" head. Call for compatibility check with your liquid products.**

FEATURES:

- 316 Stainless Steel End Suction Centrifugals
- Viton® Mechanical Seals are Standard



Other Chemflo Models Available - Call for Availability

Part No.	Description
MX MP400	*Chemflo Pump with 5 HP, 3-Phase, TEFC Motor. 2" x 1-1/2".....

* 125 GPM @ 77" head, up to 1.3 s.g. liquids.