

Series 43 Crimp Fittings — Plated Steel —

43 Series Plated Steel Crimp Fittings for use with a wide variety of hydraulic hose, like Parker short shell style. 1-Piece construction that works well with Parker dies and crimping machines. 1/4" thru 3/8" Fittings are rated to 6,000 PSI working pressure 1/2" thru 1" fittings are rated 4,000 PSI working pressure. Always confirm the pressure rating of your hose for safety.

Male MPT Solid

| Part No. | Hose I.D. | Thread |
|----------------|-----------|----------------|
| PA 10143-4-4 | 1/4" | 1/4" MPT Solid |
| PA 10143-4-6 | 3/8" | 1/4" MPT Solid |
| PA 10143-6-4 | 1/4" | 3/8" MPT Solid |
| PA 10143-6-6 | 3/8" | 3/8" MPT Solid |
| PA 10143-6-8 | 1/2" | 3/8" MPT Solid |
| PA 10143-8-8 | 1/2" | 1/2" MPT Solid |
| PA 10143-12-12 | 3/4" | 3/4" MPT Solid |
| PA 10143-16-16 | 1" | 1" MPT Solid |



Male MPT Solid

Male MPT Swivel

| Part No. | Hose I.D. | Thread |
|----------------|-----------|-----------------|
| PA 11343-4-4 | 1/4" | 1/4" MPT Swivel |
| PA 11343-6-6 | 3/8" | 3/8" MPT Swivel |
| PA 11343-8-8 | 1/2" | 1/2" MPT Swivel |
| PA 11343-12-12 | 3/4" | 3/4" MPT Swivel |
| PA 11343-16-16 | 1" | 1" MPT Swivel |



Female FPT Solid

Female FPT Solid

| Part No. | Hose I.D. | Thread |
|----------------|-----------|----------------|
| PA 10243-4-4 | 1/4" | 1/4" FPT Solid |
| PA 10243-6-6 | 3/8" | 3/8" FPT Solid |
| PA 10243-8-8 | 1/2" | 1/2" FPT Solid |
| PA 10243-12-12 | 3/4" | 3/4" FPT Solid |

Series 43 Stainless Crimp Fittings — 316SS —

43 Series Stainless Crimp Fittings are for use with a wide variety of high pressure and hydraulic hoses with 1SN (100R1), 2SN (100R2), R16 and R17 ratings. Can be used with crimping machines or swagers. One piece, 316SS construction. All ends are NPT pipe thread but other thread ends are available. Solid and swivel styles as shown. (Note: For use with hoses marked for Series 43 fittings, see hose specifications). HY and BW Series fittings are also available upon request.

Series 43 Stainless

| Part No. | Hose I.D. | NPT Thread |
|----------------|-----------|---------------------|
| TT SS43MP44 | 1/4" | 1/4" Male Solid.... |
| TT SS43FPX44 | 1/4" | 1/4" Female Swivel |
| TT SS43MP66 | 3/8" | 3/8" Male Solid.... |
| TT SS43FPX66 | 3/8" | 3/8" Female Swivel |
| TT SS43MP88 | 1/2" | 1/2" Male Solid.... |
| TT SS43FPX88 | 1/2" | 1/2" Female Swivel |
| TT SS43MP1212 | 3/4" | 3/4" Male Solid.... |
| TT SS43FPX1212 | 3/4" | 3/4" Female Swivel |
| TT SS43MP1616 | 1" | 1" Male Solid..... |
| TT SS43FPX1616 | 1" | 1" Female Swivel . |



Male MPT Solid



Female FPT Solid

CALL for CURRENT PRICING

RR2 Series Reusable Hose Fittings — 316SS —

These **316SS Reusable Fittings** are for use with double braid high pressure and hydraulic hoses with SAE100R2 or 2SN (100R2) ratings. Hose x Male NPT solid ends. 2-Piece design allows for hoses to be repaired in the field with a common vise and wrenches.

RR2 Series Reusable Fittings

| Part No. | Hose I.D. | NPT Thread |
|----------------|-----------|-----------------|
| TT SSRR2MP44 | 1/4" | 1/4" Male Solid |
| TT SSRR2MP66 | 3/8" | 3/8" Male Solid |
| TT SSRR2MP88 | 1/2" | 1/2" Male Solid |
| TT SSRR2MP1212 | 3/4" | 3/4" Male Solid |
| TT SSRR2MP1616 | 1" | 1" Male Solid |

CALL for CURRENT PRICING



Brass Reusable Couplings



Two-piece stem and ferrule assemblies. Easy to install and remove. Standard with Solid MPT ends.

Brass fittings are rated to 300 PSI and are primarily for low pressure liquid or air applications.

OD hose size is critical to a proper fit on all fittings.

Brass Construction

| Part No. | Hose ID | OD | THREAD | Max. PSI |
|-------------|---------|------|--------|----------|
| AB 183-4084 | 1/4" | .50" | 1/4" | 300 PSI |
| AB 183-4086 | 1/4" | .50" | 3/8" | 300 PSI |
| AB 183-6114 | 3/8" | .69" | 1/4" | 300 PSI |
| AB 183-6116 | 3/8" | .69" | 3/8" | 300 PSI |
| AB 183-6118 | 3/8" | .69" | 1/2" | 300 PSI |
| AB 183-8146 | 1/2" | .88" | 3/8" | 300 PSI |
| AB 183-8148 | 1/2" | .88" | 1/2" | 300 PSI |

MP Series Power Crimp Fittings — Plated Steel —



Mega-Crimp Fittings for use with 1-wire, 2-wire and thermoplastic hoses. Used with swagers or crimping machines. One piece design. Commonly used for hose repair or new assemblies. Available in solid or swivel styles.

| Part No. | Hose I.D. | Thread Type |
|-------------|-----------|------------------------|
| GA 4G4MP | 1/4" | 1/4" MPT Solid..... |
| GA 4G4MPX | 1/4" | 1/4" MPT Swivel |
| GA 4G4FP | 1/4" | 1/4" FPT Solid |
| GA 4G4FPX | 1/4" | 1/4" FPT Swivel |
| GA 4G4FJX | 1/4" | 1/4" JIC Female Swivel |
| GA 4G6MP | 1/4" | 3/8" MPT Solid..... |
| GA 4G6MPX | 1/4" | 3/8" MPT Swivel |
| GA 6G4MP | 3/8" | 1/4" MPT Solid..... |
| GA 6G4MPX | 3/8" | 1/4" MPT Swivel |
| GA 6G6MP | 3/8" | 3/8" MPT Solid..... |
| GA 6G6MPX | 3/8" | 3/8" MPT Swivel |
| GA 6G6FP | 3/8" | 3/8" FPT Solid |
| GA 6G6FPX | 3/8" | 3/8" FPT Swivel |
| GA 6G6FJX | 3/8" | 3/8" JIC Female Swivel |
| GA 6G8MP | 3/8" | 1/2" MPT Solid..... |
| GA 6G8MPX | 3/8" | 1/2" MPT Swivel |
| GA 8G6MP | 1/2" | 3/8" MPT Solid..... |
| GA 8G6MPX | 1/2" | 3/8" MPT Swivel |
| GA 8G8MP | 1/2" | 1/2" MPT Solid..... |
| GA 8G8MPX | 1/2" | 1/2" MPT Swivel |
| GA 8G8FP | 1/2" | 1/2" FPT Solid |
| GA 8G8FPX | 1/2" | 1/2" FPT Swivel |
| GA 8G8FJX | 1/2" | 1/2" JIC Female Swivel |
| GA 12G8MP | 3/4" | 1/2" MPT Solid..... |
| GA 12G8MPX | 3/4" | 1/2" MPT Swivel |
| GA 12G12MP | 3/4" | 3/4" MPT Solid..... |
| GA 12G12MPX | 3/4" | 3/4" MPT Swivel |
| GA 12G12FPX | 3/4" | 3/4" FPT Solid |
| GA 16G12MP | 1" | 3/4" MPT Solid..... |
| GA 16G16MP | 1" | 1" MPT Solid..... |

10% Discount on Pkg. of 10



Reusable Couplings

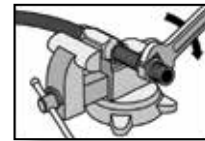
— Plated Steel —



Two-piece stem and ferrule assemblies. Easy to install and remove. Standard with Solid MPT or Swivel MPT ends.

Plated steel fittings are for high pressure wash hoses or hydraulic applications. Pressure ratings vary.

OD hose size is critical to a proper fit on all fittings.



Plated Construction

| Part No. | ID | OD | THREAD | Max. PSI |
|-----------------|------|-------|-----------------|----------|
| GA 4C1T-4RMP | 1/4" | .53" | 1/4" MPT Solid | 3000 PSI |
| GA 6C1T-4RMP | 3/8" | .69" | 1/4" MPT Solid | 3000 PSI |
| GA 6C1T-6RMP | 3/8" | .69" | 3/8" MPT Solid | 3000 PSI |
| GA 6C1T-6RMJ | 3/8" | .69" | 3/8" JIC Male | 3000 PSI |
| GA 6C1T-6RFJX | 3/8" | .69" | 3/8" JIC Female | 3000 PSI |
| GA 8C1T-6RMP | 1/2" | .82" | 3/8" MPT Solid | 2000 PSI |
| GA 8C1T-8RFJX | 1/2" | .82" | 1/2" JIC Female | 2000 PSI |
| GA 8C1T-8RMP | 1/2" | .82" | 1/2" MPT Solid | 2000 PSI |
| GA 4C2AT-4RMP | 1/4" | .58" | 1/4" MPT Solid | 4000 PSI |
| GA 6C2AT-6RMP | 3/8" | .73" | 3/8" MPT Solid | 4000 PSI |
| GA 6C2AT-6RFJX | 3/8" | .73" | 3/8" JIC Female | 4000 PSI |
| GA 8C2AT-8RMP | 1/2" | .86" | 1/2" MPT Solid | 3500 PSI |
| GA 8C2AT-8RFJX | 1/2" | .86" | 1/2" JIC Female | 3500 PSI |
| GA 6C1T-6RMPX | 3/8" | .69" | 3/8" Swivel MPT | 3000 PSI |
| GA 8C1T-8RMPX | 1/2" | .82" | 1/2" Swivel MPT | 3000 PSI |
| GA 12C1T-12RMPX | 3/4" | 1.10" | 3/4" Swivel MPT | 1200 PSI |

10% Discount on Pkg. of 10



Reusable Hose End Couplings

— 42 Series - Plated Steel —

42 Series Plated Steel Reusable Fittings are for use with a wide variety of Parker pressure wash or hydraulic hose as well as others. 2-Piece stem and ferrule assemblies for field installation. Available with solid or swivel MPT ends as shown. Pressures rated to applicable hose sizes and ratings. Check hose specifications for correct fitting series. 1/4" thru 3/8" fittings are rated to 4,000 PSI working pressure. 1/2" Fittings are rated to 3,500 PSI working pressure. 3/4" Fittings are rated to 2,250 PSI working pressure. 1" fittings are rated to 2,000 PSI working pressure. Always confirm the pressure rating of your hose for safety.



| Part No. | Hose I.D. | Thread |
|----------------|-----------|-----------------|
| PA 20142-4-4 | 1/4" | 1/4" MPT Solid |
| PA 21342-4-4 | 1/4" | 1/4" MPT Swivel |
| PA 20142-4-6 | 3/8" | 1/4" MPT Solid |
| PA 20142-6-6 | 3/8" | 3/8" MPT Solid |
| PA 21342-6-6 | 3/8" | 3/8" MPT Swivel |
| PA 20142-8-8 | 1/2" | 1/2" MPT Solid |
| PA 20142-12-12 | 3/4" | 3/4" MPT Solid |
| PA 20142-16-16 | 1" | 1" MPT Solid |