



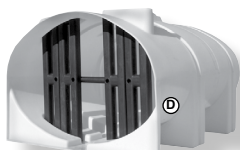
Horizontal Elliptical Leg Tanks



FS2350-88
Shown On
Optional Skid

STANDARD FEATURES

- Poly Baffle included inside tank (full height).
- 14 Lb./Gal. Rating; Elliptical shape; Free Standing.
- 3" HD Polypropylene fitting with siphon tube, opposite lid.
- Gallonage indicators one side and each end.
- Steel support hoops with powder coat paint, Black.
- Standard Off White color; Black & Yellow available.
- Ladders available for 3250-4250 gallon sizes.



Interior Baffle

TANKS

Part No.	Gallon	Fillwell	Width	Height	Length	Outlet	Wt.
RT FS1610-78	1610	16"	78"	58"	139"	3"	530 lbs.
RT FS2350-88	2350	16"	88"	63"	146"	3"	920 lbs.
RT FS2350-88-BLK	2350**	16"	88"	63"	146"	3"	920 lbs.
RT FS2750-88	2750	16"	88"	70"	146"	3"	1150 lbs.
RT FS3250-88	3250	16"	88"	79"	146"	3"	1208 lbs.
RT FS3250-88-BLK	3250**	16"	88"	79"	146"	3"	1208 lbs.
RT FS3750-88	3750	16"	88"	91"	146"	3"	1422 lbs.
RT FS4200-92	4200	16"	92"	80"	195"	3"	1648 lbs.
RT FS4250-88	4250	16"	88"	101"	146"	3"	1617 lbs.

** Black Tanks.

HOOPS (Required for All Tanks):

Part No.	Description
RT FS1610-HP	1 Set of (4) 1-1/4" Steel Hoops with "feet" for FS1610-78....
RT FS2350-HP	1 Set of (4) 1-1/4" Steel Hoops with "feet" for FS2350-88....
RT FS2750-HP	1 Set of (4) 1-1/4" Steel Hoops with "feet" for FS2750-88....
RT FS3250-HP	1 Set of (4) 1-1/4" Steel Hoops with "feet" for FS3250-88....
RT FS3750-HP	1 Set of Steel Hoops with "feet" for FS3750-88....
RT FS4200-HP	1 Set of Steel Hoops with "feet" for FS4200-92....
RT FS4250-HP	1 Set of Steel Hoops with "feet" for FS4250-88....

Note: Use Hoops with above "Feet" to hold tank on flatbed without skid.

NOTE: Use Hoops with "J" suffix at right (i.e. RTFS2350-HPJ) for FS Tanks going onto skid below.

OPTIONAL SKID for FS2350-4250 Tanks.

Part No.	Description	Wt.
RT FS23-32SK	Skid for FS2350 - 4250 Gallon Tanks, 90" x 146"	1078 lbs.
RT FS4200-SK	Skid for 4200 - Gallon Tank, 92" x 190"	1454 lbs.

Note: No Skid for FS1610-78 Tank.



Pick-Up Tanks



Economical Pick-Up Tanks are used as applicator tanks or when transportable (non D.O.T. regulated) containment is required. Designed to fit most full size pickup trucks with containment of liquids up to 1.7 specific gravity. Made from medium-density polyethylene with U.V. inhibitors. Translucent tank walls for level viewing; equipped with gallon indicators.

Part No.	Capacity	Fitting	Dia. X Ht.	Wt.
RT PU200	200 Gallon with 8" Lid	2"	52" x 30"	54 lbs.
RT PU350	350 Gallon with 8" Lid	2"	62" x 34"	92 lbs.
RT PU450	450 Gallon with 8" Lid	2"	62" x 41"	102 lbs.

Note: Siphon tube included.

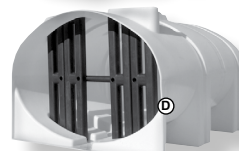
Horizontal Elliptical Leg Tanks with Sump for Complete Drainout



FM1610-78S
Shown on
Required Skid

STANDARD FEATURES

- Poly Baffle included inside tank (full height).
- Slopes to End Sump with 3" Fitting Standard for Complete Drain out. (Center sump also available-change "S" suffix to "C").
- 14 Lb./Gal. Rating; Elliptical shape; Free Standing.
- Gallonage indicators one side and each end.
- Steel support hoops with powder coat paint, Black.
- Standard Off White color; Black & Yellow available.
- Ladders available for 3250-4250 gallon sizes.



Interior Baffle

TANKS

Part No.	Gallon	Fillwell	Width	Height	Length	Outlet	Wt./Lbs.
RT FM1310-62	1310	16"	69"	74"	114"	2"	460
RT FM1610-78S	1610	16"	78"	58"	139"	3"	530
RT FM2350-88S	2350	16"	88"	63"	146"	3"	920
RT FM2750-88S	2750	16"	88"	70"	146"	3"	1150
RT FM3250-88S	3250	16"	88"	79"	146"	3"	1208
RT FM3750-88S	3750	16"	88"	91"	146"	3"	1422
RT FM4200-92	4200	16"	92"	80"	195"	3"	1648
RT FM4250-88S	4250	16"	88"	101"	146"	3"	1617

CALL for CURRENT PRICING

HOOPS (Required for All Tanks):

Part No.	Description
RT FM1310-HP	1 Set of (3) Hoops for FM1310-62.....
RT FM1610-HP	1 Set of (4) 1-1/4" Steel Hoops for FM1610-78S.....
RT FS2350-HPJ	1 Set of (4) 1-1/4" Steel Hoops for FM2350-88S.....
RT FS2750-HPJ	1 Set of (4) 1-1/4" Steel Hoops for FM2750-88S.....
RT FS3250-HPJ	1 Set of (4) 1-1/4" Steel Hoops for FM3250-88S.....
RT FS3750-HPJ	1 Set of Hoops for FM3750-88S.....
RT FS4200-HPJ	1 Set of Hoops for FM4200-92.....
RT FS4250-HPJ	1 Set of Hoops for FM4250-88S.....

CALL for CURRENT PRICING

SKIDS (Required for All Tanks):

Part No.	Description	Wt./Lbs.
RT FM1310-SKE	Skid for FM1310-62 Tank with End Sump, 105"x64"...	450
RT FM1610-SKE	Skid for FM1610-78S Tank with End Sump, 78" x 139".....	490
RT FM23-32E	Skid for FM2350-4250 Gal. Tanks with End Sump, 88" x 141"	1060
RT FM23-32C	Skid for FM2350-4250 Gal. Tanks w/ Center Sump, 88" x 141"	1060
RT FM4200-SKEO	Skid for FM4200 Tank with End Sump, 92" x 190".....	1454
RT FM4200-SKCO	Skid for FM4200 Tank with Center Sump, 92" x 190".....	1454

CALL for CURRENT PRICING

Low-Profile Pick-up Tanks 205, 305 & 325 Gallon Capacity



Pick-Up Tanks will fit most pick-up beds.

Features: Low profile for good visibility and low center of gravity • 2" bulk head withdrawal fitting • Positive lock fill well cap • Engineered design permits efficient use of space • Extra deep recess in fill well area reduces spillage during filling and while moving over rough terrain • Rated to 12 lbs./Gal. • Molded gallonage indicator.



Part No.	Gallon	Color	Lid Size
RV 47168	325	White	10"
RT PU205	* 205	White	7"
RT PU305	† 305	White	7"

Call Toll Free For Prices

* Tank fits Ford Ranger, GMC Canyon, Chevy Colorado, Dodge Dakota, Nissan Frontier & Toyota Tacoma
† Tank fits Ford F150, F250, F350; Dodge Ram 1500, 2500, 3500; Chevy Silverado 1500, 2500, 3500; GMC Sierra 1500, 2500, 3500; Toyota Tundra; & Lincoln Mark LT.