

## Stainless Steel Weld Fittings

Schedule 10 - 304SS

90° Elbow  
Long Radius

Part No.	Size
CT WL90-1SS	1"
CT WL90-114SS	1-1/4"
CT WL90-112SS	1-1/2"
CT WL90-2SS	2"
CT WL90-3SS	3"
CT WL90-4SS	4"
CT WL90-6SS	6"

45° Elbow  
Long Radius

Part No.	Size
CT WL45-1SS	1"
CT WL45-114SS	1-1/4"
CT WL45-112SS	1-1/2"
CT WL45-2SS	2"
CT WL45-3SS	3"
CT WL45-4SS	4"
CT WL45-6SS	6"

## TEE



Part No.	Size
CT WT-1SS	1"
CT WT-114SS	1-1/4"
CT WT-112SS	1-1/2"
CT WT-2SS	2"
CT WT-3SS	3"
CT WT-4SS	4"
CT WT-6SS	6"

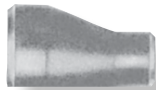
## CAP



Part No.	Size
CT WCA-1SS	1"
CT WCA-114SS	1-1/4"
CT WCA-112SS	1-1/2"
CT WCA-2SS	2"
CT WCA-3SS	3"
CT WCA-4SS	4"
CT WCA-6SS	6"

REDUCER  
(Concentric)

Part No.	Size
CT WRED-2X1SS	2"x1"
CT WRED-3X2SS	3"x2"
CT WRED-4X2SS	4"x2"
CT WRED-4X3SS	4"x3"
CT WRED-6X4SS	6"x4"

REDUCER  
(Eccentric)

Part No.	Size
CT WREE-2X1SS	2"x1"
CT WREE-3X2SS	3"x2"
CT WREE-4X3SS	4"x3"
CT WREE-6X4SS	6"x4"

## CROSS

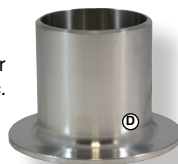


Part No.	Size
CT WCR-3SS	3"
CT WCR-4SS	4"
CT WCR-6SS	6"

## Weld "Stub" Ends

316SS - Schedule 10

For use with steel backup rings and gaskets; allows for connections that break apart easily for maintenance, etc.  
Flat Face Flange, Type C Fitting.



Part No.	Size
CT WST-112SSX	1-1/2"
CT WST-200SSX	2"
CT WST-300SSX	3"
CT WST-400SSX	4"
CT WST-600SSX	6"

## Stainless Steel Weld Fittings

Schedule 40 - 304SS

Part No.	Size
CT WL90-1SS-40	1"
CT WL90-114SS-40	1-1/4"
CT WL90-112SS-40	1-1/2"
CT WL90-2SS-40	2"
CT WL90-3SS-40	3"
CT WL90-4SS-40	4"
CT WL90-6SS-40	6"

90° Elbow  
Long Radius

Part No.	Size
CT WL45-1SS-40	1"
CT WL45-112SS-40	1-1/2"
CT WL45-2SS-40	2"
CT WL45-3SS-40	3"
CT WL45-4SS-40	4"
CT WL45-6SS-40	6"

45° Elbow  
Long Radius

Part No.	Size
CT WT-1SS-40	1"
CT WT-112SS-40	1-1/2"
CT WT-2SS-40	2"
CT WT-3SS-40	3"
CT WT-4SS-40	4"
CT WT-6SS-40	6"

## TEE



Part No.	Size
CT WCA-1SS-40	1"
CT WCA-112SS-40	1-1/2"
CT WCA-2SS-40	2"
CT WCA-3SS-40	3"
CT WCA-4SS-40	4"
CT WCA-6SS-40	6"

## CAP



Part No.	Size
CT WRED-2X1SS-40	2"x1"
CT WRED-3X2SS-40	3"x2"
CT WRED-4X2SS-40	4"x2"
CT WRED-4X3SS-40	4"x3"
CT WRED-6X4SS-40	6"x4"

REDUCER  
(Concentric)

Part No.	Size
CT WREE-2X1SS-40	2"x1"
CT WREE-3X2SS-40	3"x2"
CT WREE-4X3SS-40	4"x3"
CT WREE-6X4SS-40	6"x4"

REDUCER  
(Eccentric)

Part No.	Size
CT WCR-3SS-40	3"
CT WCR-4SS-40	4"

## CROSS



## Sight Flow Indicators

These Tough Acrylic Sight Flow Indicators are designed to fit between two standard 150 lb. ANSI flanges. One inside corner is beveled for use with butterfly valves. For use with gas, diesel, liquid fertilizer and many other products (not for use with NH3 or LPG). Use with standard flange gaskets. Rated to 200 PSI W.P. at 180° F.

**Note:** Not for hose ends - will scratch if dragged on the ground.



Part No.	Size (I.D.)	Outside Diameter	Width
VV SG2	2"	6"	1-7/16"
VV SG3	3"	7.5"	1-7/16"
VV SG4	4"	9"	1-7/16"
VV SG6	6"	11"	1-7/16"