



Features: Reinforced Polypropylene • Heavy Duty (Schedule 80) • For Acid based fertilizers • Available in sizes 1/2" thru 4" • 150 PSI - W.P. at 70° F.; Maximum Temperature is 150° F. • Excellent Chemical Resistance • FDA approved for potable water

Polypropylene PIPE FITTINGS

While having excellent chemical resistance, Polypropylene fittings lack the strength of the Nylon (shown on adjacent pages) but are compatible with certain acids which attack Nylon. Polypropylene is the best selection for ACID based products.

Pipe Nipples (Long Sizes)



Part No.	Size	Std. Pkg.
TK 900-1/4XCL	1/4" x Close	10
TK 900-3/8XCL	3/8" x Close	10
TK 900-1/2XCL	1/2" x Close	10
TK 900-1/2X3	1/2" x 3"	10
TK 900-3/4XCL	3/4" x Close	10
TK 900-3/4X4	3/4" x 4"	10
TK 900-3/4X6	3/4" x 6"	10
TK 900-1XCL	1" x Close	10
TK 900-1X4	1" x 4"	10
TK 900-1X6	1" x 6"	10
TK 900-1-1/4XCL	1-1/4" x Close	10
TK 900-1-1/4X4	1-1/4" x 4"	10
TK 900-1-1/4X6	1-1/4" x 6"	10
TK 900-1-1/2XCL	1-1/2" x Close	10
TK 900-1-1/2X3	1-1/2" x 3"	10
TK 900-1-1/2X4	1-1/2" x 4"	10
TK 900-1-1/2X6	1-1/2" x 6"	10
TK 900-2XCL	2" x Close	10
TK 900-2X4	2" x 4"	10
TK 900-2X6	2" x 6"	10
TK 900-3XCL	3" x Close	10
TK 900-3X4	3" x 4"	10
TK 900-3X6	3" x 6"	10
TK 900-4XCL	4" x Close	10

Hex Nipples (Close Sizes)



TK 901-3/8X1/4	3/8" x 1/4"	10
TK 901-1/2X1/4	1/2" x 1/4"	10
TK 901-1/2X3/8	1/2" x 3/8"	10
TK 901-3/4X1/4	3/4" x 1/4"	10
TK 901-3/4X3/8	3/4" x 3/8"	10
TK 901-3/4X1/2	3/4" x 1/2"	10
TK 901-1X1/4	1" x 1/4"	10
TK 901-1X1/2	1" x 1/2"	10
TK 901-1X3/4	1" x 3/4"	10
TK 901-1-1/4x3/4	1-1/4" x 3/4"	10
TK 901-1-1/4X1	1-1/4" x 1"	10
TK 901-1-1/2X3/4	1-1/2" x 3/4"	10
TK 901-1-1/2X1	1-1/2" x 1"	10
TK 901-1-1/2X114	1-1/2" x 1-1/4"	10
TK 901-2X3/4	2" x 3/4"	10
TK 901-2X1	2" x 1"	10
TK 901-2X1-1/4	2" x 1-1/4"	10
TK 901-2X1-1/2	2" x 1-1/2"	10
TK 901-3X1-1/2	3" x 1-1/2"	10
TK 901-3X2	3" x 2"	10
TK 901-4X3	4" x 3"	10

Bushings

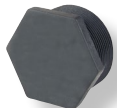


Reducers



TK 902-1X3/4	1" x 3/4"	10
TK 902-1-1/2X1	1-1/2" x 1"	10
TK 902-1-1/2X114	1-1/2" x 1-1/4"	10
TK 902-2X1/2	2" x 1/2"	10
TK 902-2X1	2" x 1"	10
TK 902-2X1-1/4	2" x 1-1/4"	10
TK 902-2X1-1/2	2" x 1-1/2"	10
TK 902-3X2	3" x 2"	10

Plugs



TK 903-1/4	1/4"	10
TK 903-3/8	3/8"	10
TK 903-1/2	1/2"	10
TK 903-3/4	3/4"	10
TK 903-1	1"	10
TK 903-1-1/4	1-1/4"	10
TK 903-1-1/2	1-1/2"	10
TK 903-2	2"	10
TK 903-3	3"	10

Caps



TK 904-3/8	3/8"	10
TK 904-1/2	1/2"	10
TK 904-3/4	3/4"	10
TK 904-1	1"	10
TK 904-1-1/4	1-1/4"	10
TK 904-1-1/2	1-1/2"	10
TK 904-2	2"	10
TK 904-3	3"	10

Couplings



Part No.	Size	Std. Pkg.
TK 905-1/4	1/4"	10
TK 905-3/8	3/8"	10
TK 905-1/2	1/2"	10
TK 905-3/4	3/4"	10
TK 905-1	1"	10
TK 905-1-1/4	1-1/4"	10
TK 905-1-1/2	1-1/2"	10
TK 905-2	2"	10
TK 905-3	3"	10

Tees



TK 906-1/4	1/4"	10
TK 906-3/8	3/8"	10
TK 906-1/2	1/2"	10
TK 906-3/4	3/4"	10
TK 906-1	1"	10
TK 906-1-1/4	1-1/4"	10
TK 906-1-1/2	1-1/2"	10
TK 906-2	2"	10
TK 906-3	3"	10

90° Elbows



TK 907-1/4	1/4"	10
TK 907-3/8	3/8"	10
TK 907-1/2	1/2"	10
TK 907-3/4	3/4"	10
TK 907-1	1"	10
TK 907-1-1/4	1-1/4"	10
TK 907-1-1/2	1-1/2"	10
TK 907-2	2"	10
TK 907-3	3"	10

45° Elbow



Part No.	Size	Std. Pkg.
TK EL100-45	1"	-



90° Street Elbows



Part No.	Size	Std. Pkg.
TK 908-1/4	1/4"	10
TK 908-3/8	3/8"	10
TK 908-1/2	1/2"	10
TK 908-3/4	3/4"	10
TK 908-1	1"	10
TK 908-1-1/4	1-1/4"	10
TK 908-1-1/2	1-1/2"	10
TK 908-2	2"	10
TK 908-3	3"	10

45° Street Elbows



TK 912-3/4	3/4"	10
TK 912-1	1"	10
TK 912-1-1/4	1-1/4"	10
TK 912-1-1/2	1-1/2"	10
TK 912-2	2"	10
TK 912-3	3"	10

Crosses



TK 909-3/8	3/8"	10
TK 909-1/2	1/2"	10
TK 909-3/4	3/4"	5
TK 909-1	1"	5
TK 909-1-1/4	1-1/4"	5
TK 909-1-1/2	1-1/2"	5
TK 909-2	2"	5

THREAD SEALANT FOR POLYPROPYLENE FITTINGS: #7 Rectorseal is best for AGR/Chemicals & fertilizers including acid based. #5 or #21 Rectorseal (Same product, #21 is black) would be second choice but will not handle acid based products. All should have a 24 hour cure time before pressurizing the system. On large size threads (2"+), must apply to both sides.

Less 10% Discount On Std. Pkgs.