

# E0331 Polyethylene Pipe (HDPE) & Accessories

**The Ideal Pipe for Chemical & Fertilizer Transfer • Economical • No Rust • Smooth (High Flowrates) • Unaffected by Sunlight • Extremely Tough**

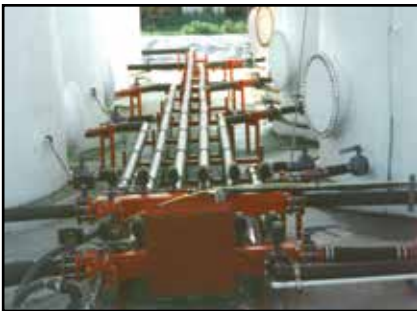


HDPE is an outstanding choice for chemical & fertilizer transfer. Lightweight, flexible, chemical and abrasion resistant. This product will not rust, rot, corrode or crack like some other pipe products. Resistant to agriculture chemicals and acids. **SAVES** greatly in **LABOR COSTS** vs. Welded Steel Pipe. Ask about the many jobs that we have done using this unique product.



Poly pipe and fittings are coupled by a process called Heat Fusion. Heat Fusion is done with a special machine that actually melts the pipe and fittings and bonds them together creating a fused joint stronger than the pipe itself. This design also enables you to easily add new lines or fittings if required in the future. Fusion machines can be rented or purchased separately.

High Density Polyethylene Pipe is rated to 140° F. Stocked in 1-1/2" through 6" sizes, (other sizes are available on request). Black with excellent UV resistance — very long life expectancy outdoors! **Not for flammable liquids or petroleum base products. Stocked in 20' lengths.**



Part No.	Nominal Size	*I.D./SDR	**Std Length	***Max PSI @ 73° F	**Price Per Ft.
DP DP1000-112	1-1/2"	1.55"- SDR11	20' Lengths	200	
DP DP1000-2	2"	1.94"- SDR11	20' Lengths	200	
DP DP1000-3-17	3"	3.09"- SDR17	20' Lengths	125	
DP DP1000-3	3"	2.86"- SDR11	20' Lengths	200	
DP DP1000-4-17	4"	3.97"- SDR17	20' Lengths	125	
DP DP1000-4	4"	3.68"- SDR11	20' Lengths	200	
DP DP1000-6	6"	5.85"- SDR17	20' Lengths	125	
DP DP1000-6-11	6"	5.42"- SDR11	40' Lengths	200	
DP DP1000-8	8"	7.61"- SDR17	40' Lengths	125	

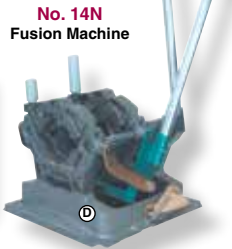
**Call for Current Pricing**

\* I.D. varies with SDR rating due to wall thickness of pipe.

\*\* Stocked in 20' lengths. 40' lengths available on special order basis. Shipped direct from factory.

\*\*\* Maximum working pressure with 2:1 safety factor.

## Butt Fusion Machines - for Poly Pipe -



Part No.	Description	Wt.
DP 14N	* Fusion Machine for 1-1/4" to 4" pipe (with 4" Clamp Only).....	85 lbs.
DP 26N	** Fusion Machine for 2" to 6" pipe (with 6" Clamp Only).....	85 lbs.
DP 28N	† Fusion Machine for 2" to 8" pipe (with 8" Clamp Only).....	6 lbs.
DP 207514	1-1/4" Clamp Insert for 14 machine.....	5 lbs.
DP 207515	1-1/2" Clamp Insert for 14 machine.....	5 lbs.
DP 214201	Screw Set with Driver for 1", 1-1/4" & 1-1/2" Clamp Inserts..	2 lbs.
DP 410007	2" Clamp Insert for 14 machine.....	9 lbs.
DP 410103	3" Clamp Insert for 14 machine.....	9 lbs.
DP 809204	2" Clamp Insert for 28 machine.....	26 lbs.
DP 809304	3" Clamp Insert for 28 machine.....	22 lbs.
DP 809408	4" Clamp Insert for 28 machine.....	22 lbs.
DP 801510	6" Clamp Insert for 28 machine.....	28 lbs.
DP 413702	Cutter blade set for 14 machine, as replacement ..	4 lbs.
DP A425201	Heater Plate, set of 2.....	6 lbs.

**Call for Current Pricing**

\* No. 14 machine may be rented.

\*\* No. 26 machine may be rented.

† No. 28 machine may be rented.

**Call for Daily Rates**

## Electro Fusion Processor - for Poly Pipe -

The **DP33N** is ideal for use on existing systems where overhead, vertical or horizontal lines are inaccessible to the standard butt fusion machines. The machine is light enough to be shipped via UPS. It is equipped with a bar code scanner: by scanning the bar code attached to each fitting, the machine is automatically adjusted for the correct voltages, heating times and ambient temperatures. **Use with electro fusion couplings (see right).**

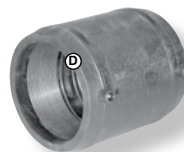


**DP33N**

**Specifications:** Weight 47 lbs., with transport box is 57 lbs. • Temp range: -4° F to + 122° F. AC 95 to 135 Volt • For use with generators; 2 KW is required for 1/2" through 2" fittings, 4 KW for 3" through 20".

**The DP33N May Be Rented. Call for Rates.**

## Electro Fusion Couplings



Couplings can be used to repair damaged sections of pipe or add to an existing line. The couplings are made of polyethylene with the heating coils molded into the fitting. This design allows direct heating of the interface between the pipe and fittings with an electro fusion machine. They are bar coded and must be scanned to get the proper machine settings. No alignment tools are necessary.

Part No.	Pipe Size
DP FC150	1-1/2"
DP FC200	2"
DP FC300	3"
DP FC400	4"
DP FC600	6"

**We appreciate YOUR BUSINESS!**