

Motor Accessories

Cast Iron Sheaves/Pulleys



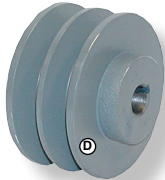
**SINGLE GROOVE
FIXED BORE**
2-1/4" to 2-1/2"



2.95" to 3.55"

ONE GROOVE – Fixed Bore for "A"/"B"/4L/5L Belts

O.D. INCHES	B Belt Pitch Dia.	Part No.					
		5/8"	3/4"	7/8"	1"	1-1/8"	
2.25	2.00	GA 7800-67	7800-68	7800-69	7800-70	—	
2.50	2.10	GA 7800-72	7800-73	7800-102	7800-74	7800-75	
2.95	2.60	GA 7800-76	7800-77	7800-103	7800-78	7800-79	
3.15	2.80	GA 7800-81	7800-82	7800-104	7800-83	7800-84	
3.55	3.20	GA 7800-91	7800-92	7800-106	7800-93	7807-3618	



**TWO GROOVE
FIXED BORE**

TWO GROOVE – Fixed Bore for "A"/"B"/4L/5L Belts

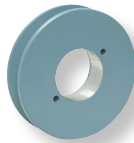
O.D. INCHES	B Belt Pitch Dia.	Part No.					
		5/8"	3/4"	7/8"	1"	1-1/8"	
2.50	2.30	GA 7807-7212	7807-7213	7807-7214	7807-7215	7807-7217	
2.95	2.60	GA 7807-7232	7807-7233	7807-7234	7807-7235	7807-3593	
3.35	3.00	GA 7807-7817	7807-7818	7807-7819	7807-7820	7807-7816	
3.55	3.20	GA 7807-7822	7807-7823	7807-7824	7807-7825	7807-7826	

Cast Iron Sheaves

Bushing Required, But Not Included.

ONE GROOVE for "A"/"B"/4L/5L Belts & Q Hubs

Part No.	O.D.	A Belt	B Belt
GA 7801-151	3.95	3.20	3.60
GA 7801-153	4.45	3.70	4.10
GA 7801-155	4.95	4.20	4.60
GA 7801-157	5.45	4.70	5.10
GA 7801-159	5.95	5.20	5.60
GA 7801-161	6.45	5.70	6.10
GA 7801-162	6.75	6.00	6.40
GA 7801-164	7.25	6.50	6.90
GA 7801-166	7.75	7.00	7.40
GA 7801-169	8.75	8.00	8.40
GA 7801-171	9.75	9.00	9.40
GA 7801-173	10.75	10.00	10.40
GA 7801-175	11.75	11.00	11.40
GA 7801-177	12.75	12.00	12.40
GA 7801-179	13.75	13.00	13.40
GA 7801-182	15.75	15.00	15.40



GA7801-151



GA7801-179

TWO GROOVE for "A"/"B"/4L/5L Belts & Q Hubs

Part No.	O.D.	A Belt	B Belt
GA 7801-251	3.95	3.20	3.60
GA 7801-253	4.45	3.70	4.10
GA 7801-255	4.95	4.20	4.60
GA 7801-257	5.45	4.70	5.10
GA 7801-259	5.95	5.20	5.60
GA 7801-261	6.45	5.70	6.10
GA 7801-262	6.75	6.00	6.40
GA 7801-266	7.75	7.00	7.40
GA 7801-269	8.75	8.00	8.40
GA 7801-271	9.75	9.00	9.40
GA 7801-273	10.75	10.00	10.40
GA 7801-275	11.75	11.00	11.40
GA 7801-277	12.75	12.00	12.40
GA 7801-279	13.75	13.00	13.40
GA 7801-282	15.75	15.00	15.40



GA7801-253



GA7801-269

THREE GROOVE for "A"/"B"/4L/5L Belts & SH/SD/SK Hubs

Part No.	O.D.	A Belt	B Belt	Hub
GA 3B34	3.75	3.0	3.4	SH
GA 3B36	3.95	3.2	3.6	SH
GA 3B38	4.15	3.2	3.6	SH
GA 3B40	4.35	3.2	3.6	SH
GA 3B46	4.95	4.2	4.6	SD
GA 3B50	5.35	4.6	5.0	SD
GA 3B56	5.95	5.2	5.6	SD
GA 3B60	6.35	5.6	6.0	SD
GA 3B70	7.35	6.6	7.0	SK
GA 3B74	7.75	7.0	7.4	SK
GA 3B80	8.35	7.6	8.0	SK
GA 3B94	9.75	9.0	9.4	SK
GA 3B124	12.75	12.0	12.4	SK
GA 3B136	13.95	13.2	13.6	SK



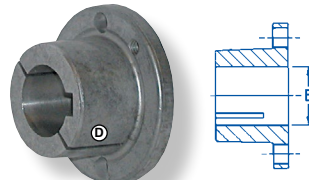
GA3B34

Split Full Grip Bushings Ductile Iron - Q/L/H Series

For Single & Double Groove Pulleys Only

Split bushings provide a precision fit between the rim of the sheave and the bushing. The bushing is straight bored to fit the shaft. Match to your motor or pump shaft.

Two socket head cap screws furnished with each bushing. **Keys are not supplied.**



Bore (in.)	Product No.	** Key Seat
1/2	7812-3	None
9/16	7812-4	1/8" x 1/16"
5/8	7812-5	3/16" x 3/32"
11/16	7812-6	3/16" x 3/32"
3/4	7812-7	3/16" x 3/32"
13/16	7812-8	3/16" x 3/32"
7/8	7812-9	3/16" x 3/32"
15/16	7812-10	1/4" x 1/8"
1	7812-11	1/4" x 1/8"
1-1/16	7812-12	1/4" x 1/8"
1-1/8	7812-13	1/4" x 1/8"
1-3/16	7812-14	1/4" x 1/8"
1-1/4	7812-15	1/4" x 1/16"
1-5/16	7812-16	5/16" x 1/16"
1-3/8	7812-17	5/16" x 1/16"
1-7/16	7812-18	3/8" x 1/16"
1-1/2	7812-19	3/8" x 1/16"

** Key Not Included

Part No.	Bore Size	* Key Required
GA 7812-3	1/2"	1/8" x 1/8"
GA 7812-5	5/8"	3/16" x 3/16"
GA 7812-7	3/4"	3/16" x 3/16"
GA 7812-9	7/8"	3/16" x 3/16"
GA 7812-8	15/16"	1/4" x 1/4"
GA 7812-11	1"	1/4" x 1/4"
GA 7812-13	1-1/8"	1/4" x 1/4"
GA 7812-14	1-3/16"	1/4" x 1/4"
GA 7812-15	1-1/4"	1/4" x 1/4"
GA 7812-16	1-5/16"	5/16" x 7/32"
GA 7812-17	1-3/8"	5/16" x 7/32"
GA 7812-18	1-7/16"	3/8" x 1/4"
GA 7812-19	1-1/2"	3/8" x 1/4"
GA 7812-1030	18mm	6mm x 6mm
GA 7812-1031	20mm	6mm x 6mm
GA 7812-1034	22mm	6mm x 6mm
GA 7812-1032	24mm	8mm x 7mm
GA 7812-1033	25mm	8mm x 7mm
GA 7812-1035	28mm	8mm x 7mm
GA 7812-1036	30mm	8mm x 7mm
GA 7812-1037	32mm	10mm x 8mm
GA 7812-1038	35mm	10mm x 6mm
GA 7812-1040	38mm	10mm x 6mm

* Key Not included.