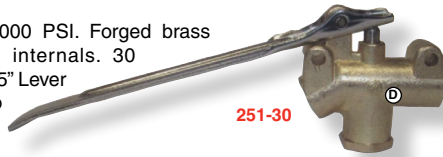


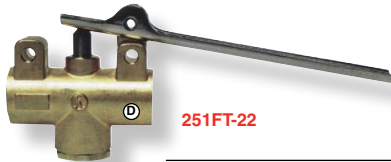
KINGSTON Wand Valves

KINGSTON Valves are used for carpet cleaning and car wash systems. Angle or straight design as shown. All valves feature 1/4" FPT ports, except Model 167100. Brass construction. A wide variety of valves to meet your needs.

251-30 is rated to 1000 PSI. Forged brass body with stainless internals. 30 Degree angle design. 5" Lever is included. Rated to 225° F.



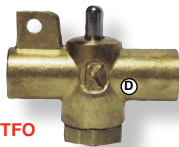
251-30



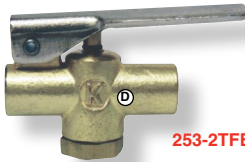
251FT-22

251FT-22 is the same as above, but in straight design, no angle. 5" Lever is included.

253-2TFO is rated to 350 PSI. Viton® and Teflon seals for harsh solutions. This valve is less the lever.



253-2TFO



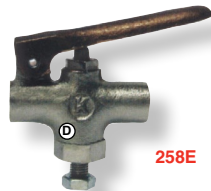
253-2TFB

253-2TFB is rated to 350 PSI. Viton® and Teflon seals and 3" lever are standard.

254-2EEA is rated to 350 PSI and 225° F. Seals are Ethylene Propylene. Standard with a 5" steel lever.



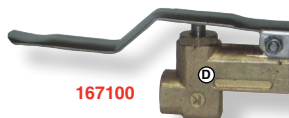
254-2EEA



258E

258E is rated to 350 PSI. Nickel-plated design and Teflon, EP internals are ideal for caustic chemicals like wheel or tire cleaning solutions. 3" Lever included.

167100 is rated to 500 PSI and 300° F. Forged body and stainless stem. Includes lever. Buna and Teflon seals. 1/8" Ports.

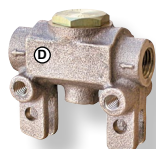


167100

Part No.	Max. PSI
KG 251-30	1000
KG 251FT-22	1000
KG 253-2TFO	350
KG 253-2TFB	350
KG 254-2EEA	350
KG 258E	350
KG 167100	500



Wand Valve



18000

18000 features bronze cast body and Viton® seals. Rated to 800 PSI. Ports are 1/4" FPT. Standard with stainless stem.

Part No.	Ports	PSI	Material
UP 18000	1/4"	800	Bronze Cast
UP 400075	Seal Kit for 18000		
UP 400076	Poppet & Seal Kit for 18000		

MF Wand Valves

Hand Valves for upholstery tools or floor wands. These are standard replacements for most wands on the market.



V120P features plastic construction. Stainless steel stems and are rated to 120 psi. Ports are 1/4" FPT.

V1245 Aluminum **V1245B** Brass

V300 is a forged brass valve with stainless stem and Viton O-rings. Rated to 300 psi. Ports are 1/4" FPT.



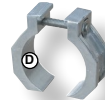
V300



V800

V800 features forged brass construction and is rated to 800 psi. Ports are 1/4" FPT. Standard with stainless stem.

Repair kits for all valves are available and include replacement stem and O-rings.

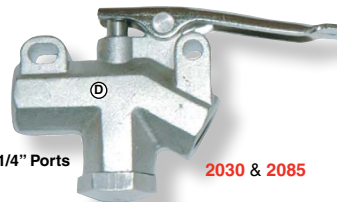


V12H Hanger Bracket

Part No.	Ports	PSI	Material
TE V1245	1/8"	400	Aluminum
TE V1245B	1/8"	500	Brass
TE V120P	1/4"	120	Plastic
TE V300	1/4"	300	Forged Brass
TE V800	1/4"	800	Forged Brass
TE R120	Repair Kit for V120/V120P		
TE R300	Repair Kit for V300		
TE R800	Repair Kit for V800		
TE S800	Repair Kit with Stem for V800		
TE R1245	Repair Kit for V1245		
TE V12H	Hanger Bracket, 1-1/2"		
TE V14H	Hanger Bracket, 1-1/4"		

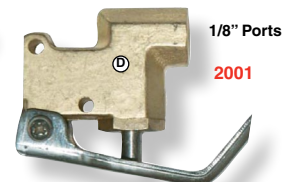
Westpak USA Wand Valves

Replacement Wand Valves from Westpak USA. For floor wands and detail tools. Available in brass or stainless construction. Stainless ball and Teflon seats are standard. **2001** is for use on detail wands. **2030** or **2085** angle valves are for use on floor wands.



1/4" Ports

2030 & 2085



1/8" Ports

2001



Part No.	Max. PSI	Material	Maximum Temperature
TE 2001	Detail Valve	1200	Brass 180° F.
TE 2030	Angle Valve	1200	Brass 180° F.
TE 2085	Angle Valve	1500	S.S. 210° F.
TE 2018	Repair Kit, Detail Valves		
TE 2019	Repair Kit, Angle Valves		

Viton® is a registered trademark of DuPont Performance Elastomers